

F750VIC Technical Data Sheet

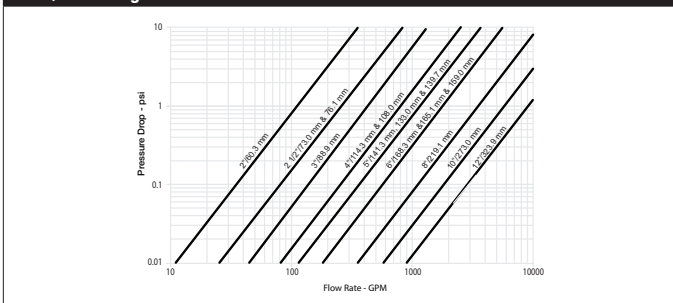
Pressure Enhanced Rubber Seat



Technical Data	
Fluid	chilled or hot water, up to 60% glycol
Flow characteristic	modified linear
Controllable flow range	90° rotation
Valve Size [mm]	2" [50]
Pipe connection	grooved ANSI/AWWA (c606)
Housing	Ductile cast iron ASTM A536
Body finish	black alkyd enamel
Stem	416 stainless steel
Spindle bearing	fiberglass with TFE lining
Seat	EPDM
Disc	electroless nickel coated ductile iron
Body Pressure Rating	ANSI Class Grooved AWWA, 300 psi
ANSI Class	Grooved AWWA
Rangeability Sv	100:1
Maximum Velocity	20 FPS
Cv	115
Weight	15.4 lb [7.0 kg]
Fluid Temp Range (water)	-22...250°F [-30...120°C]
Leakage rate	0%
Servicing	maintenance-free

Close-off pressures are variable and actuator dependent, consult Select Pro and/or Price Guide for specifics.

Flow/Mounting Details



Application

These valves are designed to meet the needs of HVAC and commercial applications requiring bubble tight shut-off for liquids. Typical applications include chiller isolation, cooling tower isolation, change-over systems, large air handler coil control, bypass and process control applications. The large Cv values provide for an economical control valve solution for larger flow applications. Designed for use in Victaulic® piping systems.

Jobsite Note

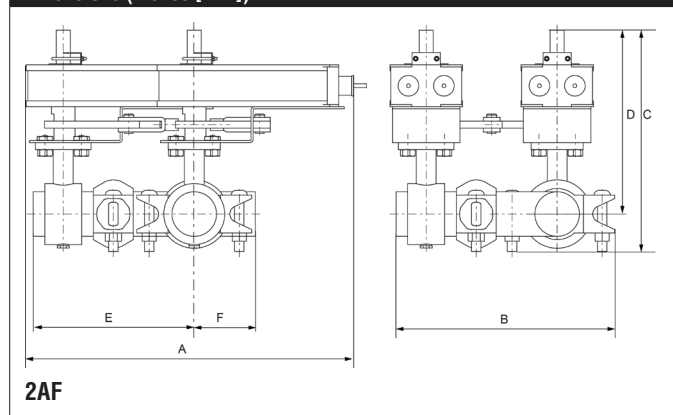
Valve assembly should be stored in a weather protected area prior to installation. Reference the butterfly valve installation instruction for additional information.

Flow/Cv	Cv 30°	Cv 40°	Cv 50°	Cv 60°	Cv 70°	Cv 90°
	7	14	23	36	60	115

Suitable Actuators

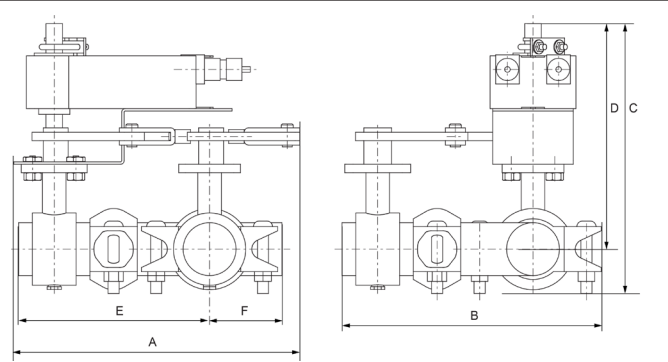
	Non-Spring	Spring
F750VIC	GMB(X)	AF, (2*AFB(X))

Dimensions (Inches [mm])



A	B	C	D	E	F
17.5" [444]	11.7" [298]	11.6" [294]	9.8" [248]	8.6" [218]	3.3" [85]

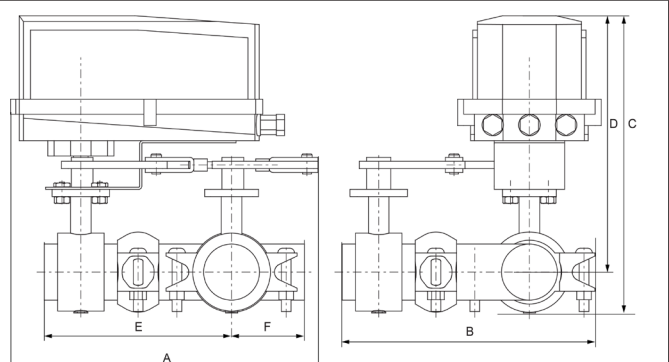
Dimensions (Inches [mm])



AF

A	B	C	D	E	F
12.7" [323]	11.7" [298]	12.1" [307]	10.1" [256]	8.6" [218]	3.3" [85]

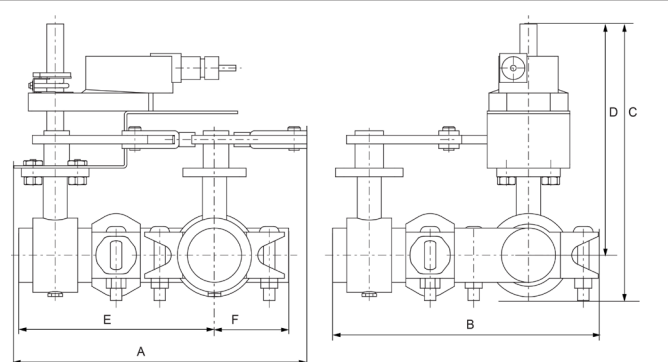
Dimensions (Inches [mm])



GM N4

A	B	C	D	E	F
14.7" [373]	11.7" [298]	14.5" [368]	12.7" [323]	8.6" [218]	3.3" [85]

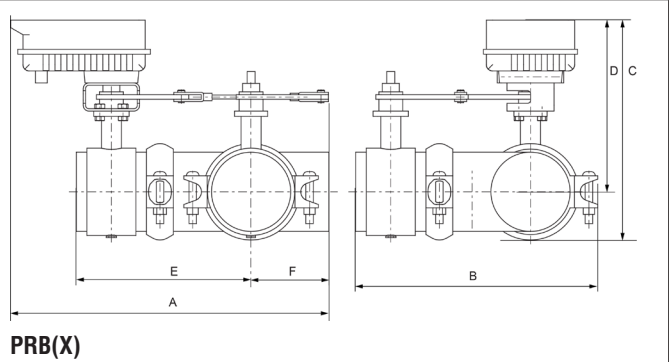
Dimensions (Inches [mm])



AM

A	B	C	D	E	F
12.7" [323]	11.7" [298]	12.1" [307]	10.1" [256]	8.6" [218]	3.3" [85]

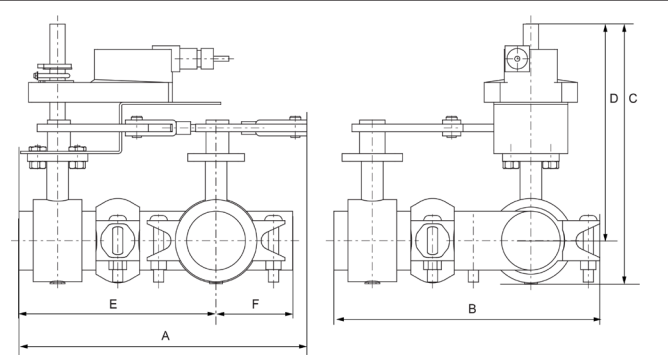
Dimensions (Inches [mm])



PRB(X)

A	B	C	D	E	F
14.3" [364]	11.7" [298]	13.2" [335]	11.4" [290]	8.6" [218]	3.3" [85]

Dimensions (Inches [mm])



GM

A	B	C	D	E	F
12.7" [323]	11.7" [298]	12.1" [307]	10.1" [256]	8.6" [218]	3.3" [85]

GMCX120-3-X1 N4 Technical Data Sheet

On/Off, Floating Point, Non-Spring Return, AC 100...240 V



5-year warranty



Technical Data	
Power Supply	100...240 VAC, $\pm 20\%$, 50/60 Hz, DC, $\pm 10\%$
Power consumption in operation	4 W
Power consumption in rest position	2 W
Transformer sizing	7 VA (class 2 power source)
Electrical Connection	18 GA appliance cable, 3 ft [1 m], with 1/2" conduit connector
Overload Protection	electronic throughout 0...90° rotation
Input Impedance	600 Ω
Angle of rotation	90°, adjustable with mechanical stop
Direction of motion motor	selectable with switch 0/1
Position indication	Mechanically, 5...20 mm stroke
Manual override	under cover
Running Time (Motor)	35 s, constant, independent of load
Ambient humidity	max. 95% r.H., non-condensing
Ambient temperature	-22...122°F [-30...50°C]
Storage temperature	-40...176°F [-40...80°C]
Degree of Protection	IP66/67, NEMA 4X, UL Enclosure Type 4X
Housing material	Polycarbonate
Agency Listing	cULus acc. to UL60730-1A/-2-14, CAN/CSA E60730-1:02, CE acc. to 2014/30/EU and 2014/35/EU
Noise level, motor	45 dB(A)
Servicing	maintenance-free
Quality Standard	ISO 9001
Weight	9.92 lb [4.5 kg]

†Rated Impulse Voltage 800V, Type of action 1.AA, Control Pollution Degree 3

