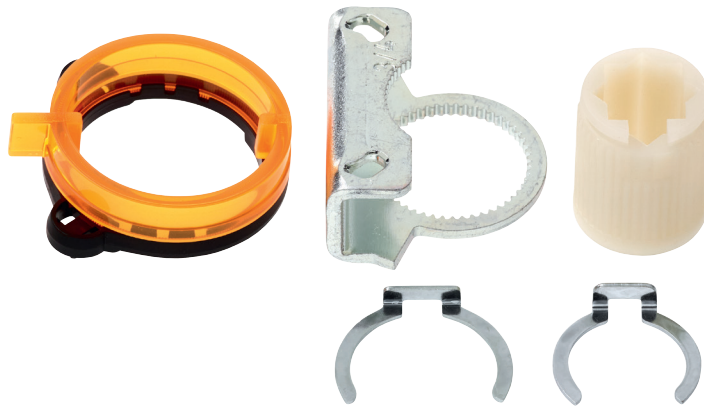


Form fit insert 12x12 mm

- for LM..A, TM..A
- with angle of rotation limiter and position indication

**Technical data**

| | | |
|---------------|----------------|--------------------|
| Weight | Weight | 0.13 kg |
| | Packaging size | Multi-pack 20 pcs. |

Product features

| | |
|-----------------------|---|
| Used materials | Thermo-plastic material Galvanised steel |
| Application | Suitable for LM..A, LMC..A, TMC..A |

