

4th Generation EPIV Flanged Version Next-Level Performance

What's New & Improved

- **Built-in NFC on Flow Meter:** Settings can now be changed in the field via the Belimo Assistant 2 App.
 - *Previously, this functionality was not available.*
- **Integrated Pt1000 Temperature Sensor:** Directly installed on the flow body for more precise measurements and accurate media temperature readings, with output to the BMS.
 - *Previously, integrated inside the flow body for compensation only.*
- **Glycol Monitoring:** Measures and reports glycol percentage, ensures correct concentration, and optimizes pumping and heat exchange for efficient operation.
 - *Previously, glycol was only compensated internally without reporting.*

What's New & Improved



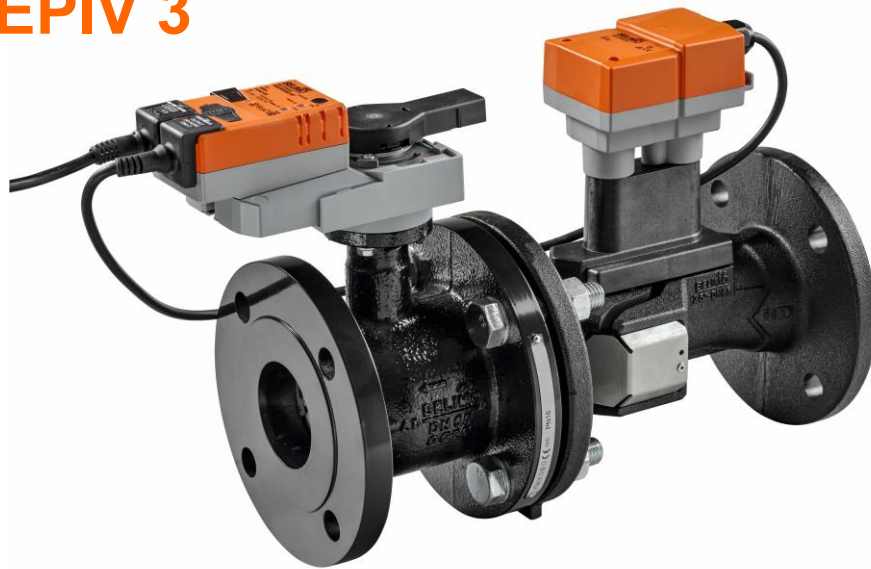
- **Higher Flow Capacity:** Flow improved up to 793 GPM (*Previously, 713 GPM*).
- **N4 Option:** Available as an alternative, including HT and HH options.
 - *Previously, N4 option was not available, and a weather shield was required.*
- **Extended Communication:** BACnet MS/TP, Modbus RTU, MP-Bus, and analog outputs are now standard on every product.
 - *Previously, extended communication was available only on –MOD models.*
- **Expanded Analog Output Feedback:** 0–10V, 0.5–10V, 2–10V signals, with selectable options for relative valve position or relative flow (excluding 0.3V).
 - *Previously, only 2–10V and 0.5–10V were available.*



What's New & Improved

- **New Part Numbers:** Now aligned with NPT EPIV4 nomenclature.
- **Reinforced Center Section:** Enhanced support for the logic module.
- **Improved Stability:** Added anti-tilt protection.

EPIV 3



EPIV 4



EPIV Features & Benefits



EPIV

2 1/2" – 6" (ANSI 125/250)
Up to 793 GPM, 2-way

0% Leakage

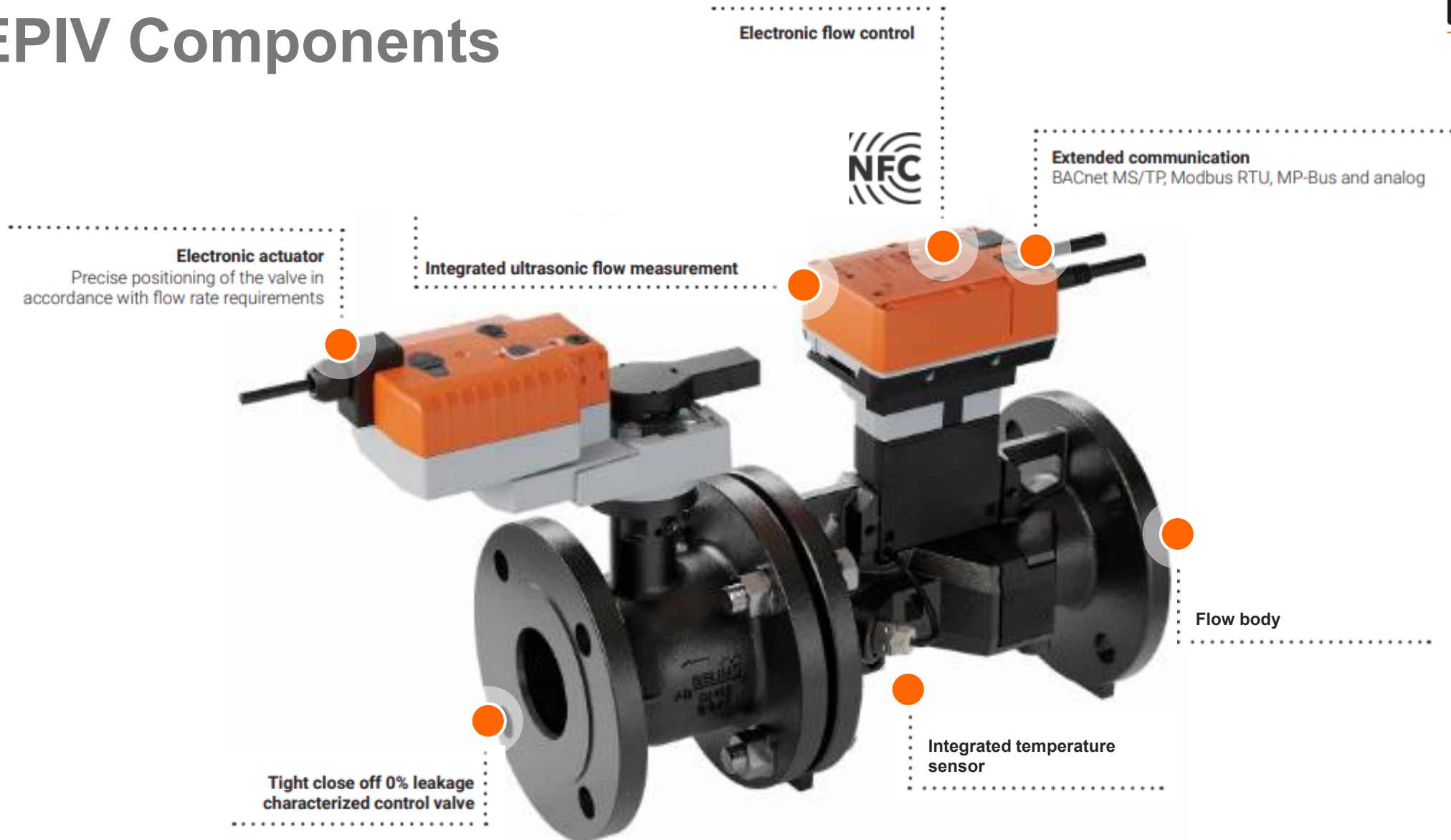
Glycol Measurement/Compensation

True Flow or Valve Position Feedback

Field Adjustable through NFC

- **Extended Communication:** BACnet MS/TP, Modbus RTU, MP-Bus, and analog.
- **Built-in NFC:** Fast, wireless setup via the Belimo Assistant 2.
- **Ultrasonic Flow Measurement with Glycol Compensation:** Delivers true flow readings, accurate total volume, and glycol percentage output.
- **Integrated Temperature Sensor:** Measures fluid temperature and monitors glycol mixture.
- **Optional Sensor Connectivity:** Supports an additional active/passive sensor or switching contact.
- **Digital Workflows:** Belimo Assistant 2 App enables remote calibration and automatic commissioning reports.

EPIV Components



Flow Capacity Comparison: EPIV3 vs EPIV4 at 5 psi



EPIV3			
Size	V'nom	V'min (1% V'nom)	V'max (30% V'nom)
[DN]	GPM	GPM	GPM
DN65	127	1.27	38.10
DN80	180	1.80	54.00
DN100	317	3.17	95.10
DN125	495	4.95	148.50
DN150	713	7.13	213.90



EPIV4			
Size	V'nom	V'min (1% V'nom)	V'max (25% V'nom)
[DN]	GPM	GPM	GPM
DN65	132	1.32	33.02
DN80	185	1.85	46.23
DN100	330	3.30	82.55
DN125	528	5.28	132.09
DN150	793	7.93	198.13

Flow Reduction Chart



ENERGY VALVE / ELECTRONIC PRESSURE INDEPENDENT VALVE (EV4/EPIV4) FLOW REDUCTION CHART

SIZE		8 psi	5 psi *	4 psi	3 psi	2 psi	1 psi
Inches	DN/Millimeters						
½"	15	6.6 GPM	6.6 GPM	6.6 GPM	6.4 GPM	5.1 GPM	3.6 GPM
¾"	20	11 GPM	11 GPM	11 GPM	10.6 GPM	8.7 GPM	6.1 GPM
1"	25	18.2 GPM	18.2 GPM	18.2 GPM	17.5 GPM	14.3 GPM	10.1 GPM
1¼"	32	28.5 GPM	28.5 GPM	28.5 GPM	28.2 GPM	23 GPM	16.3 GPM
1½"	40	44 GPM	44 GPM	44 GPM	38.4 GPM	31.3 GPM	22.1 GPM
2"	50	100 GPM**	66 GPM	66 GPM	60.1 GPM	49.7 GPM	35.2 GPM
2½"	65	132 GPM	132 GPM	121 GPM	105 GPM	85 GPM	60 GPM
3"	80	185 GPM	185 GPM	167 GPM	145 GPM	118 GPM	84 GPM
4"	100	330 GPM	330 GPM	330 GPM	286 GPM	233 GPM	165 GPM
5"	125	528 GPM	528 GPM	539 GPM	466 GPM	381 GPM	269 GPM
6"	150	793 GPM	793 GPM	734 GPM	636 GPM	519 GPM	367 GPM

*Select valve based on a minimum of 5 PSI differential.

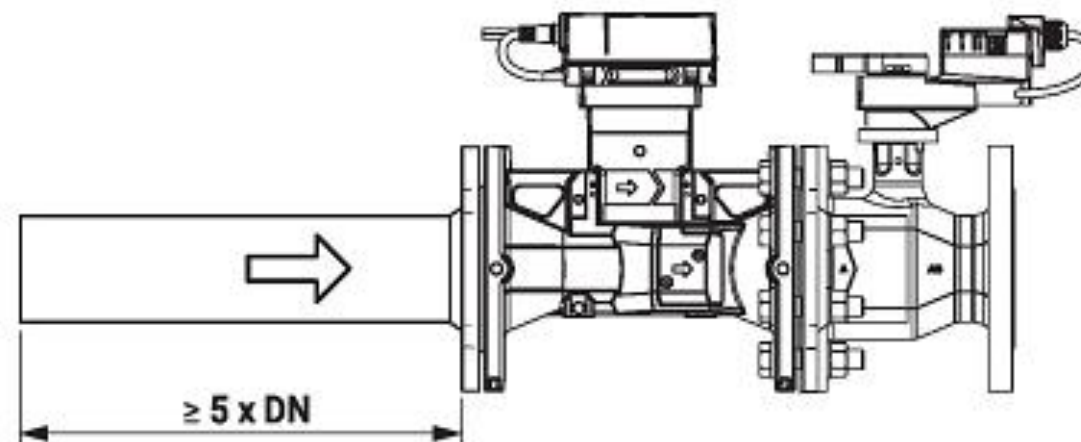
Installation Notes:

Requires **5× NPS** straight pipe section

Inlet Length **2½...6"** [DN65...DN150]

For accurate sensor readings, the EPIV requires a straight, unobstructed pipe section at least five times the valve diameter, with no elbows, tees, wells, or isolation valves.

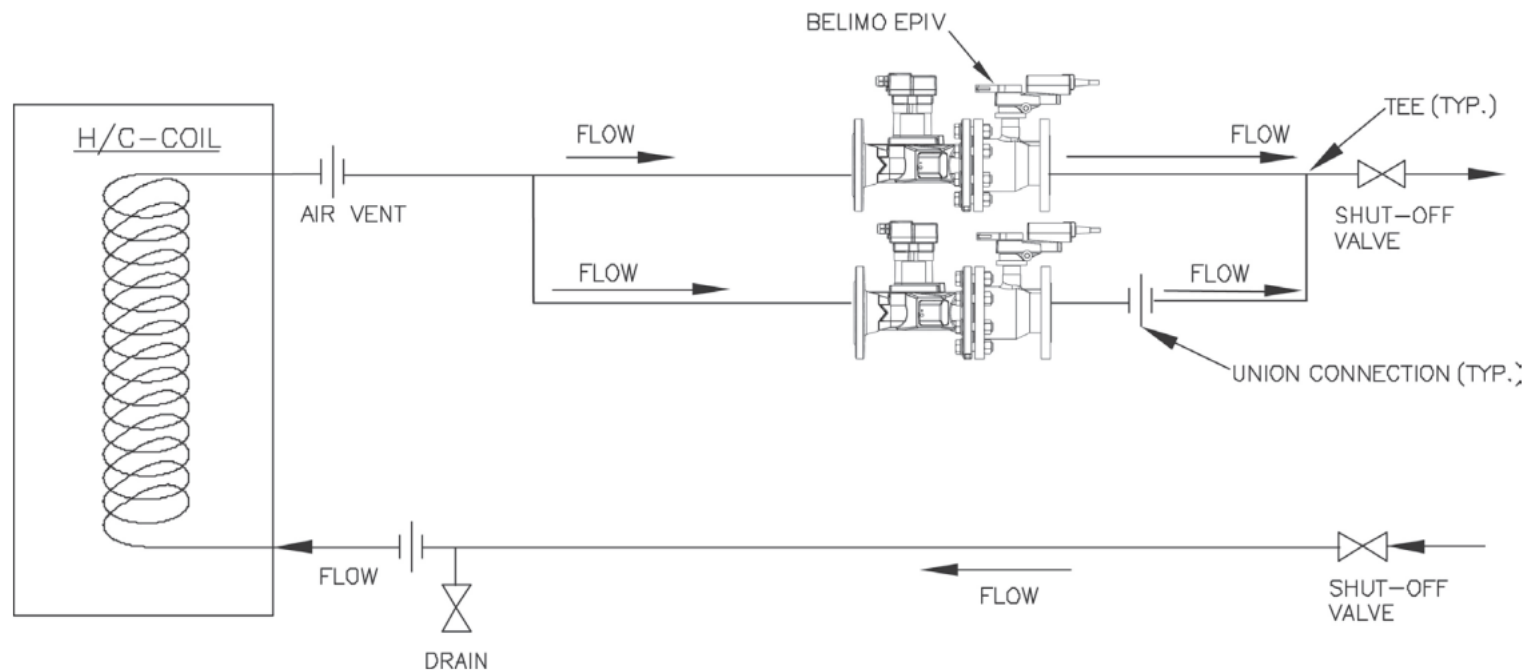
2½" [DN65]	5 x 65	=	12½" [317 mm]
3" [DN80]	5 x 80	=	15" [381 mm]
4" [DN100]	5 x 100	=	20" [508 mm]
5" [DN125]	5 x 125	=	25" [635 mm]
6" [DN150]	5 x 150	=	30" [762 mm]



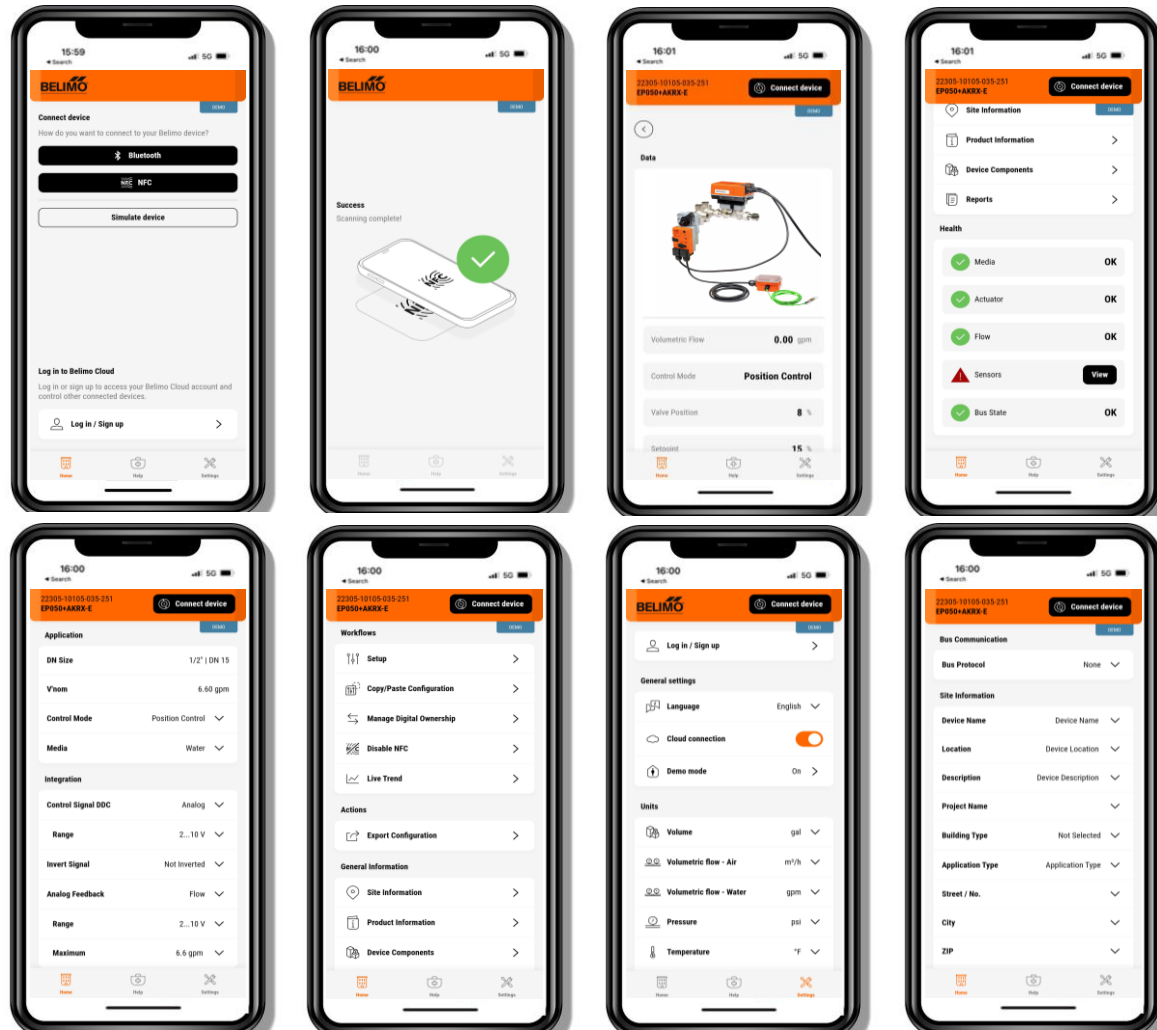
Note: No requirements for outlet length, elbows can be installed directly after the valve. All tolerances on flow measurement/control will be affected if requirements are not followed.

Piping Guidance

The EPIV can be installed on either the supply or return side of the coil, with **installation on the return side recommended**. **Valves can be piped in parallel to increase flow rates**. For flows above the nominal rate, connect two valves in parallel to a common manifold. To ensure proper operation, both actuators should receive the same 2–10 V control signal from the DDC, allowing the valves to modulate flow identically.



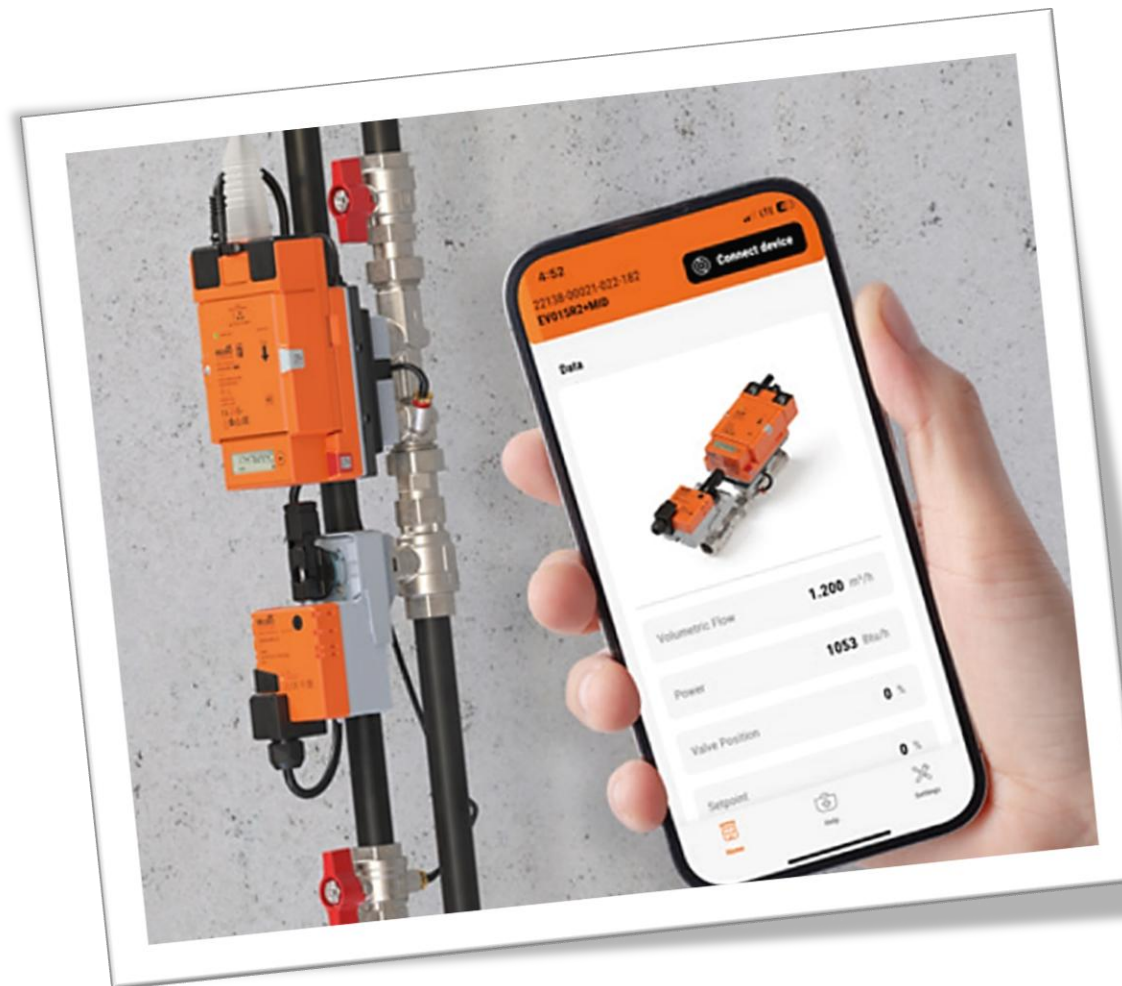
Belimo Assistant 2 App



- **Quick Setup & Full Insights with the Belimo Assistant 2 App**
 - Effortless configuration via smartphone
 - On-demand NIST calibration certificate
 - Auto-generated commissioning report
 - Real-time display of flow, energy, and system data
 - Glycol concentration (%) monitoring available

Configuration and Connectivity

- **Configuration with Belimo Assistant 2:**
 - Mobile App Connection via **NFC**.
 - Mobile App Connection via **ZIP-BT-NFC**.
 - Mobile App Connection via **LINK.10**.



EPIV3 to EPIV4 Part Number Cross Reference – 2 1/2"



Old Part Number	Material Description	New Part Number
P6250SU-127+AKRX24-EP2	DN65 EPIV, ANSI 125, fail safe	EP250+AKRX-E
P6250SU-127+ARX24-EP2	DN65 EPIV, ANSI 125, non-fail safe	EP250+ARX-E
P6250SU-127+ARX24-EP2-MOD	DN65 EPIV, ANSI 125, non-fail safe	EP250+ARX-E
P6250SU-127-250+AKRX24-EP2	DN65 EPIV, ANSI 250, fail safe	EP250-250+AKRX-E
P6250SU-127-250+ARX24-EP2	DN65 EPIV, ANSI 250, non-fail safe	EP250-250+ARX-E
P6250SU-127-250+ARX24-EP2-MOD	DN65 EPIV, ANSI 250, non-fail safe	EP250-250+ARX-E
<h2>New Products</h2>		EP250+ARX-E N4
		EP250+AKRX-E N4
		EP250+ARX-E N4HT
		EP250+AKRX-E N4HT
		EP250+ARX-E N4HH
		EP250+AKRX-E N4HH
		EP250-250+ARX-E N4
		EP250-250+AKRX-E N4
		EP250-250+ARX-E N4HT
		EP250-250+AKRX-E N4HT
		EP250-250+ARX-E N4HH
		EP250-250+AKRX-E N4HH

EPIV3 to EPIV4 Part Number Cross Reference – 3"



Old Part Number	Material Description	New Part Number
P6300SU-180+AKRX24-EP2	DN80 EPIV, ANSI 125, fail safe	EP300+AKRX-E
P6300SU-180+ARX24-EP2	DN80 EPIV, ANSI 125, non-fail safe	EP300+ARX-E
P6300SU-180+ARX24-EP2-MOD	DN80 EPIV, ANSI 125, non-fail safe	EP300+ARX-E
P6300SU-180-250+AKRX24-EP2	DN80 EPIV, ANSI 250, fail safe	EP300-250+AKRX-E
P6300SU-180-250+ARX24-EP2	DN80 EPIV, ANSI 250, non-fail safe	EP300-250+ARX-E
P6300SU-180-250+ARX24-EP2-MOD	DN80 EPIV, ANSI 250, non-fail safe	EP300-250+ARX-E
<h2>New Products</h2>		EP300+ARX-E N4
		EP300+AKRX-E N4
		EP300+ARX-E N4HT
		EP300+AKRX-E N4HT
		EP300+ARX-E N4HH
		EP300+AKRX-E N4HH
		EP300-250+ARX-E N4
		EP300-250+AKRX-E N4
		EP300-250+ARX-E N4HT
		EP300-250+AKRX-E N4HT
		EP300-250+ARX-E N4HH
		EP300-250+AKRX-E N4HH

EPIV3 to EPIV4 Part Number Cross Reference – 4"



Old Part Number	Material Description	New Part Number
P6400SU-317+GKRX24-EP2	DN100 EPIV, ANSI 125, fail safe	EP400+GKRX-E
P6400SU-317+GRX24-EP2	DN100 EPIV, ANSI 125, non-fail safe	EP400+GRX-E
P6400SU-317+GRX24-EP2-MOD	DN100 EPIV, ANSI 125, non-fail safe	EP400+GRX-E
P6400SU-317-250+GKRX24-EP2	DN100 EPIV, ANSI 250, fail safe	EP400-250+GKRX-E
P6400SU-317-250+GRX24-EP2	DN100 EPIV, ANSI 250, non-fail safe	EP400-250+GRX-E
P6400SU-317-250+GRX24-EP2-MOD	DN100 EPIV, ANSI 250, non-fail safe	EP400-250+GRX-E
<h2>New Products</h2>		EP400+GRX-E N4
		EP400+GKRX-E N4
		EP400+GRX-E N4HT
		EP400+GKRX-E N4HT
		EP400+GRX-E N4HH
		EP400+GKRX-E N4HH
		EP400-250+GRX-E N4
		EP400-250+GKRX-E N4
		EP400-250+GRX-E N4HT
		EP400-250+GKRX-E N4HT
		EP400-250+GRX-E N4HH
		EP400-250+GKRX-E N4HH

EPIV3 to EPIV4 Part Number Cross Reference – 5"



Old Part Number	Material Description	New Part Number
P6500SU-495+GKRX24-EP2	DN125 EPIV, ANSI 125, fail safe	EP500+GKRX-E
P6500SU-495+GRX24-EP2	DN125 EPIV, ANSI 125, non-fail safe	EP500+GRX-E
P6500SU-495+GRX24-EP2-MOD	DN125 EPIV, ANSI 125, non-fail safe	EP500+GRX-E
P6500SU-495-250+GKRX24-EP2	DN125 EPIV, ANSI 250, fail safe	EP500-250+GKRX-E
P6500SU-495-250+GRX24-EP2	DN125 EPIV, ANSI 250, non-fail safe	EP500-250+GRX-E
P6500SU-495-250+GRX24-EP2-MOD	DN125 EPIV, ANSI 250, non-fail safe	EP500-250+GRX-E
<h2>New Products</h2>		EP500+GRX-E N4
		EP500+GKRX-E N4
		EP500+GRX-E N4HT
		EP500+GKRX-E N4HT
		EP500+GRX-E N4HH
		EP500+GKRX-E N4HH
		EP500-250+GRX-E N4
		EP500-250+GKRX-E N4
		EP500-250+GRX-E N4HT
		EP500-250+GKRX-E N4HT
		EP500-250+GRX-E N4HH
		EP500-250+GKRX-E N4HH

EPIV3 to EPIV4 Part Number Cross Reference – 6"



Old Part Number	Material Description	New Part Number
P6600SU-713+GKRX24-EP2	DN150 EPIV, ANSI 125, fail safe	EP600+GKRX-E
P6600SU-713+GRX24-EP2	DN150 EPIV, ANSI 125, non-fail safe	EP600+GRX-E
P6600SU-713+GRX24-EP2-MOD	DN150 EPIV, ANSI 125, non-fail safe	EP600+GRX-E
P6600SU-713-250+GKRX24-EP2	DN150 EPIV, ANSI 250, fail safe	EP600-250+GKRX-E
P6600SU-713-250+GRX24-EP2	DN150 EPIV, ANSI 250, non-fail safe	EP600-250+GRX-E
P6600SU-713-250+GRX24-EP2-MOD	DN150 EPIV, ANSI 250, non-fail safe	EP600-250+GRX-E
<h2>New Products</h2>		EP600+GRX-E N4
		EP600+GKRX-E N4
		EP600+GRX-E N4HT
		EP600+GKRX-E N4HT
		EP600+GRX-E N4HH
		EP600+GKRX-E N4HH
		EP600-250+GRX-E N4
		EP600-250+GKRX-E N4
		EP600-250+GRX-E N4HT
		EP600-250+GKRX-E N4HT
		EP600-250+GRX-E N4HH
		EP600-250+GKRX-E N4HH

Documentation



New:

- Data Sheets,
- Brochure,
- Installation Instructions,
- BACnet / MP-Bus / Modbus Documentation,
- Technical Documentation...