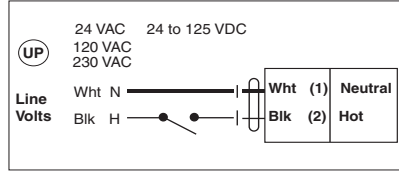
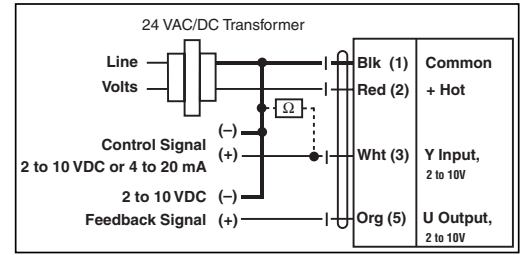


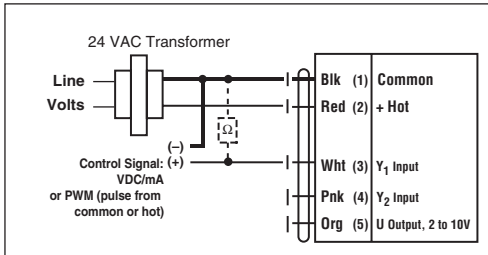
On/Off



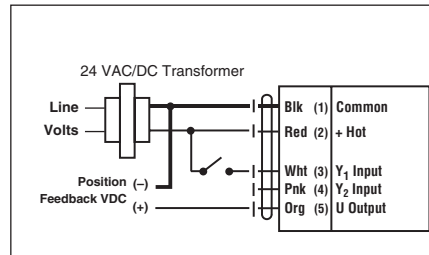
On/Off



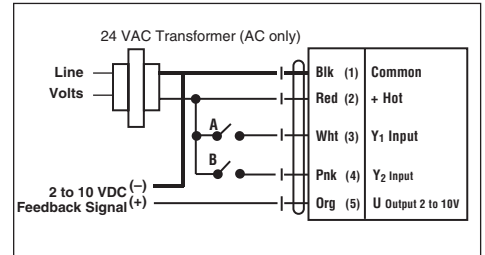
2 to 10 VDC (4 to 20 mA with 500 Ω resistor)



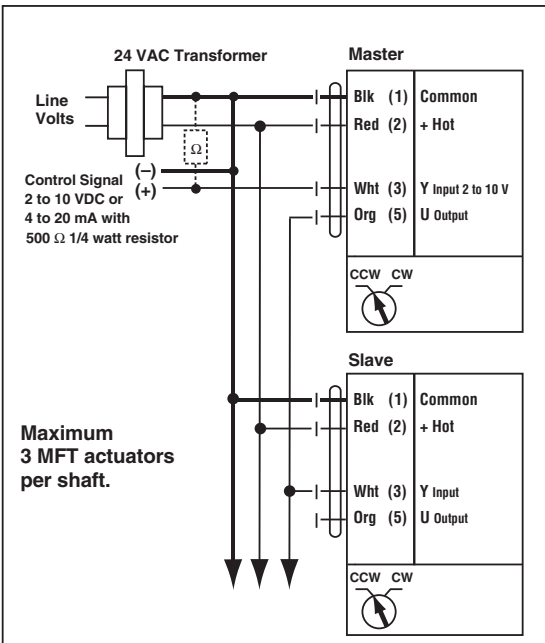
VDC/mA, PWM



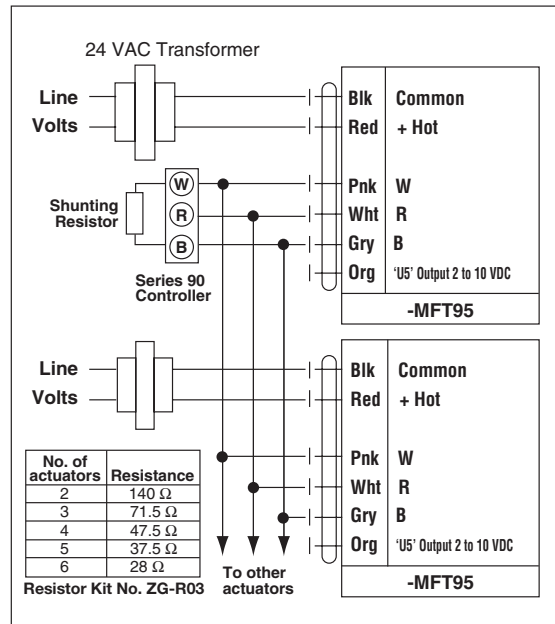
Two-Position



Floating Point

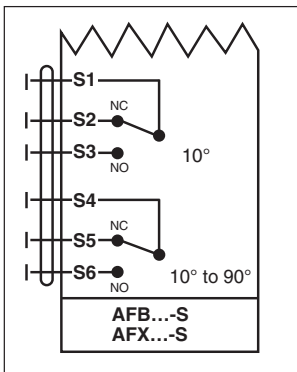


MFT Master-Slave



Wiring Multiple Actuators to a Series 90 Controller

- | | |
|--|--|
| BLK
Black
Negro
Noir
Preto | RED
Red
Rojo
Rouge
Vermelho |
| ORG
Orange
Anaranjado
Orange
Alaranjado | GRY
Gray
Gris
Gris
Cinzeno |
| WHT
White
Blanco
Blanc
Branco | Master
Master
Amo
Maitre
Mestre |
| PNK
Pink
Rosado
Rosa
Cor-de rosa | Slave
Slave
Esclavo
Esclavo
Escravo |

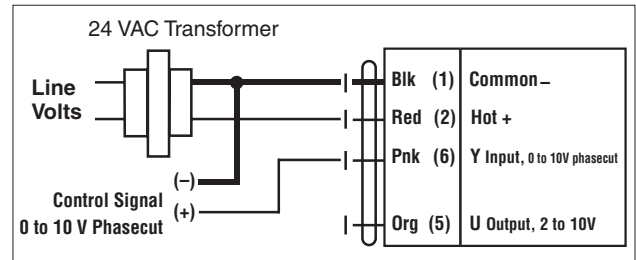


Auxiliary Switch Ratings

Product	AFB...S, AFX...S
Voltage	250 Max
Resistive Load	3.0 A Max
Inductive Load	0.5 A Max

WARNING: Apply only AC line voltage or only UL-Class 2 voltage to the terminals of both auxiliary switches. Mixed or combined operation of line voltage/safety extra low voltage is not allowed.

Auxiliary Switch Wiring for AFB...-S, AFX...-S



Phasecut