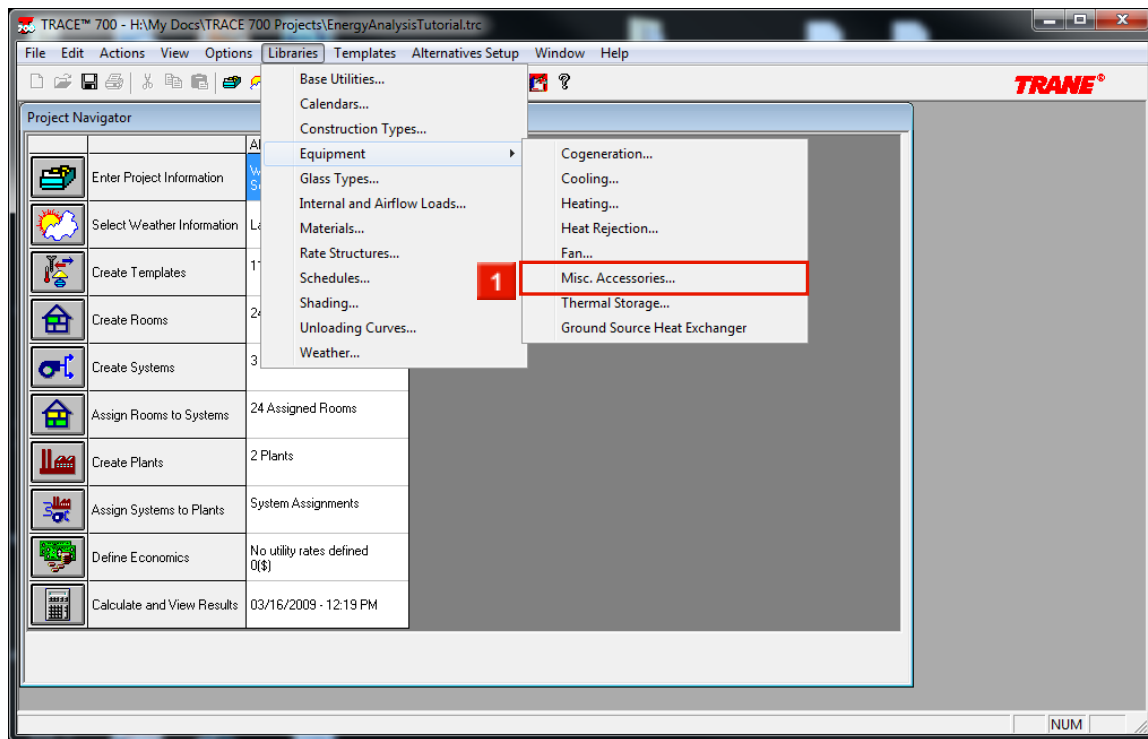


How to Select and Use
Belimo Pressure Dependent Pump Curves
on Trane *TRACE*[™] 700



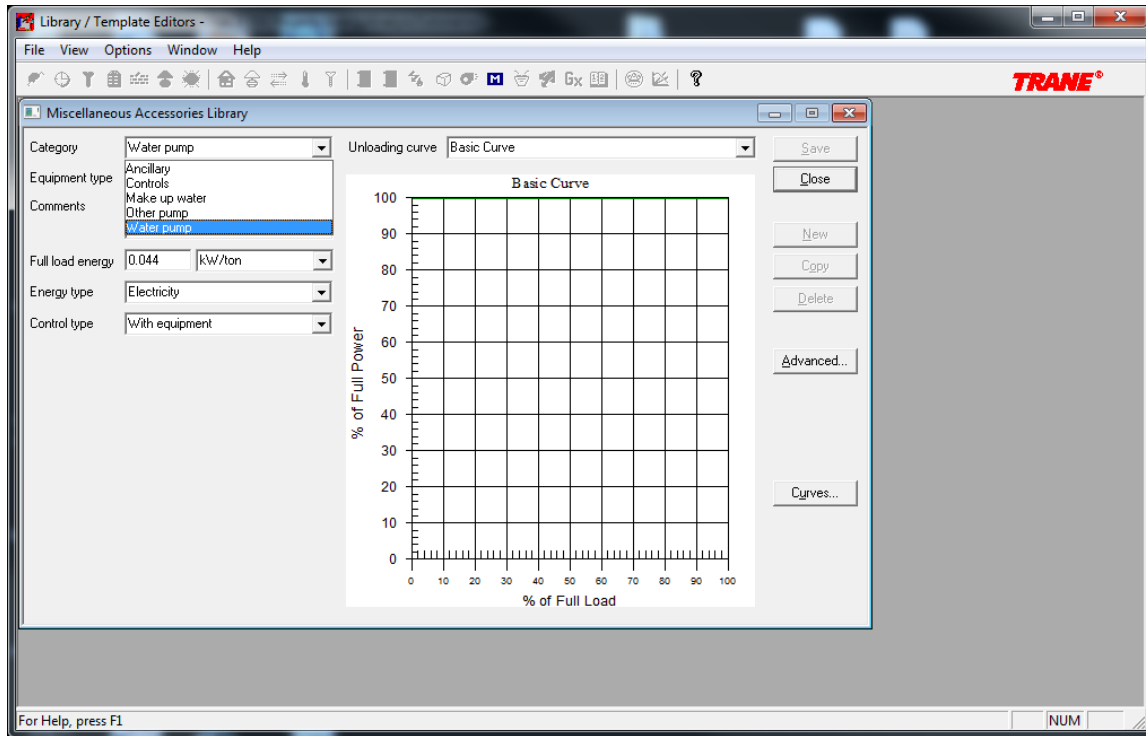
1 Open a Project on Trace 700.

To add the Belimo pressure dependent pump curves to the project follow these instructions:

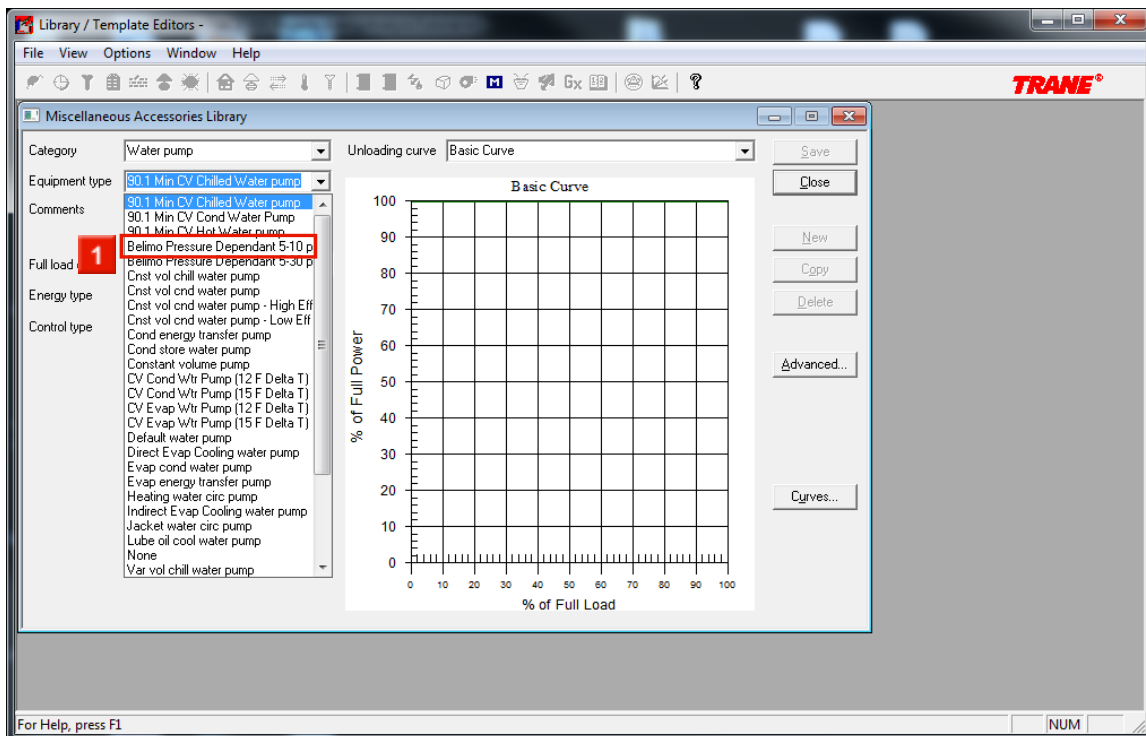


- 1** The Belimo pressure dependent pump curves are located in Libraries then select Equipment and then Misc. Accessories.

2 Library / Template Editors -



1 Under Category Select Water pump.

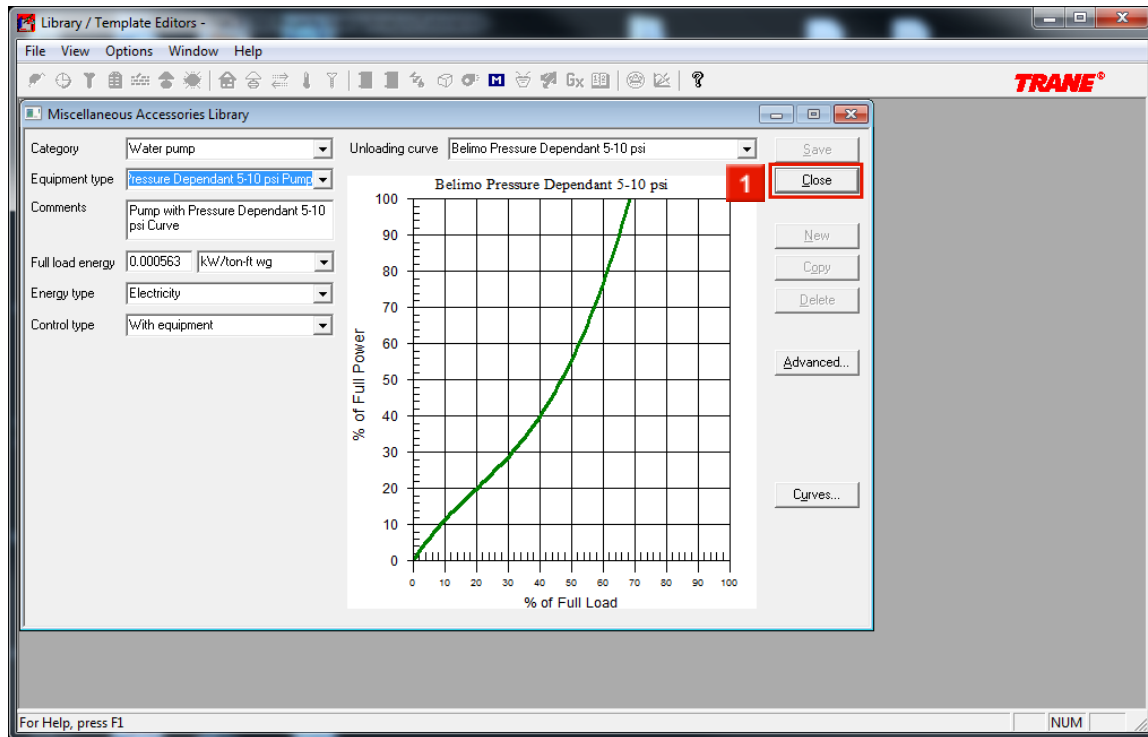


1 For Equipment select Belimo Pressure Dependent 5-10 psi Pump.

Select "Belimo Pressure Dependant 5-10 psi" when modeling new construction buildings

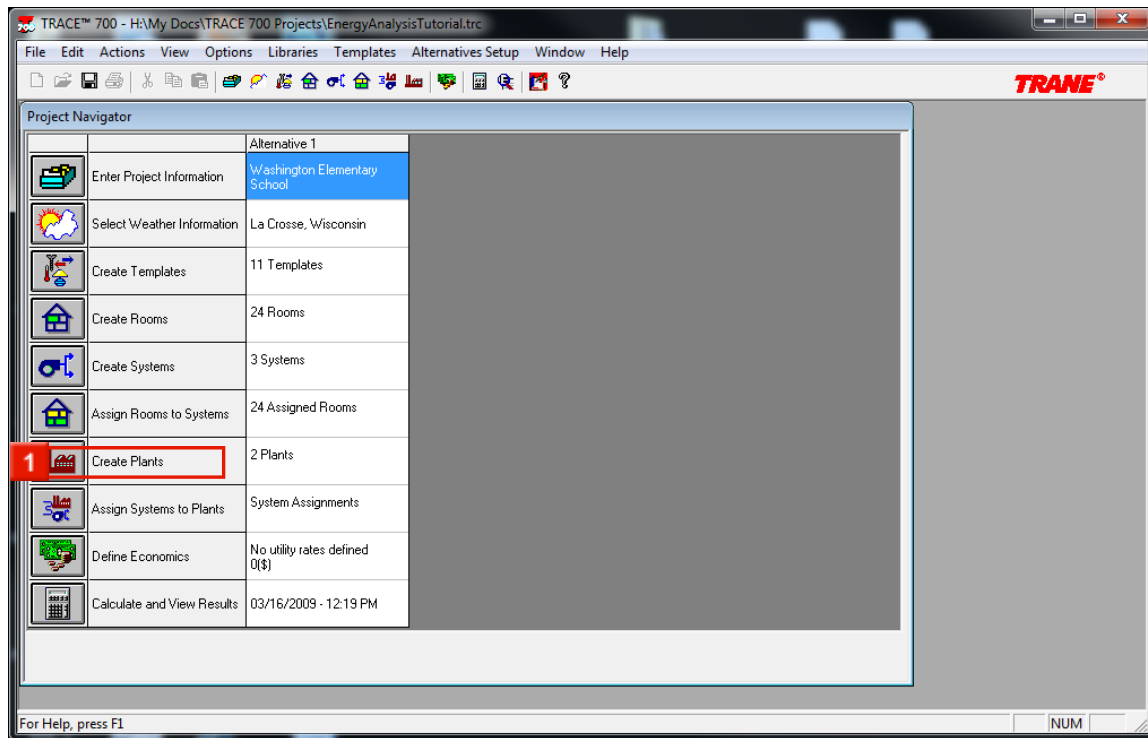
Select "Belimo Pressure Dependant 5-30 psi" when modeling retrofit applications

Belimo Pressure Dependent Pump Curves for Trace 700

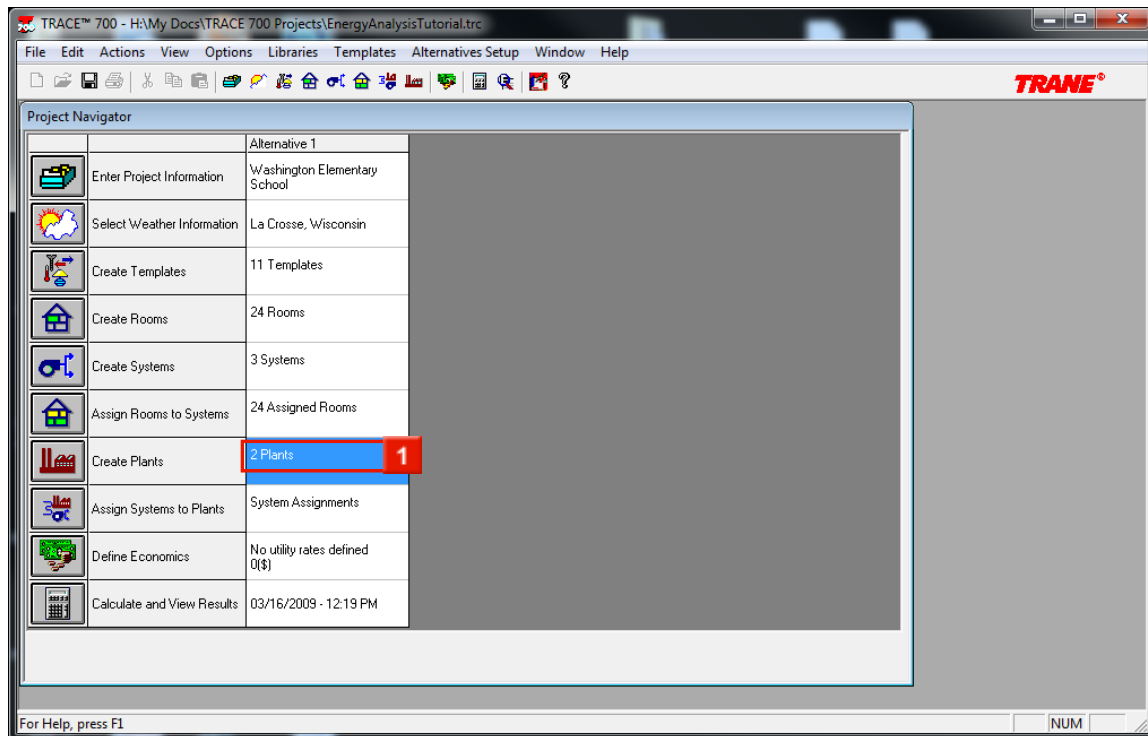


1 Click the **Close** button.

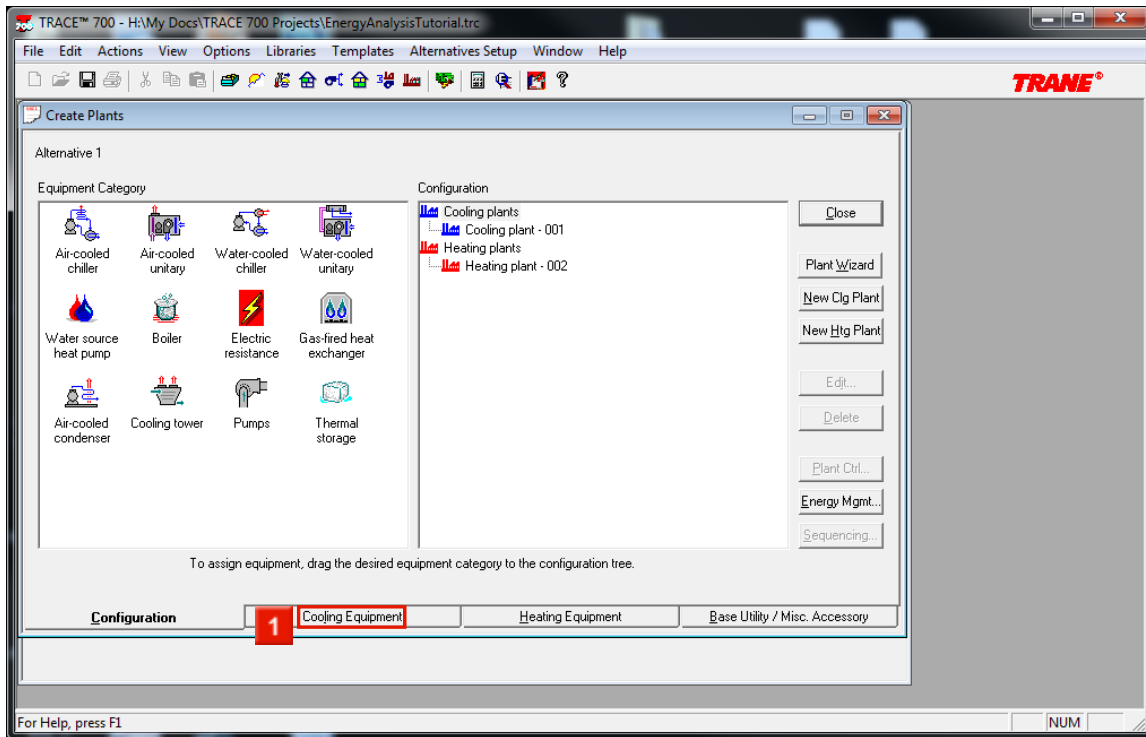
3 Go to the project Navigator



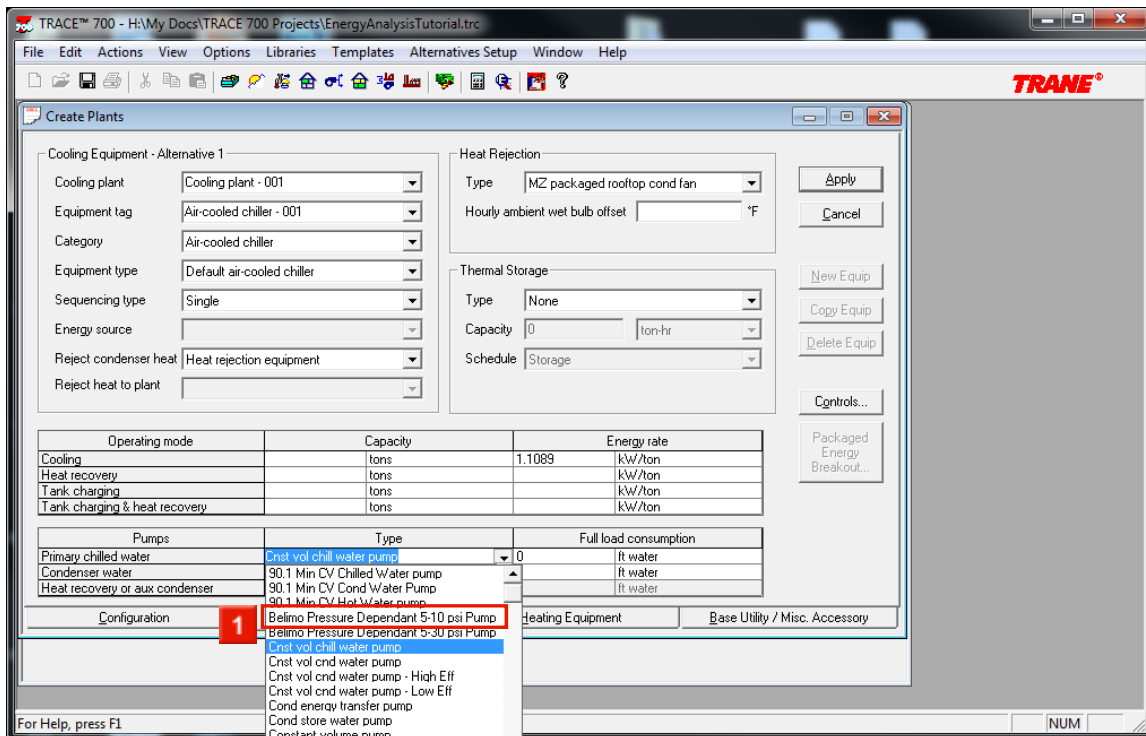
1 On the project Navigator Click **Create Plants**.



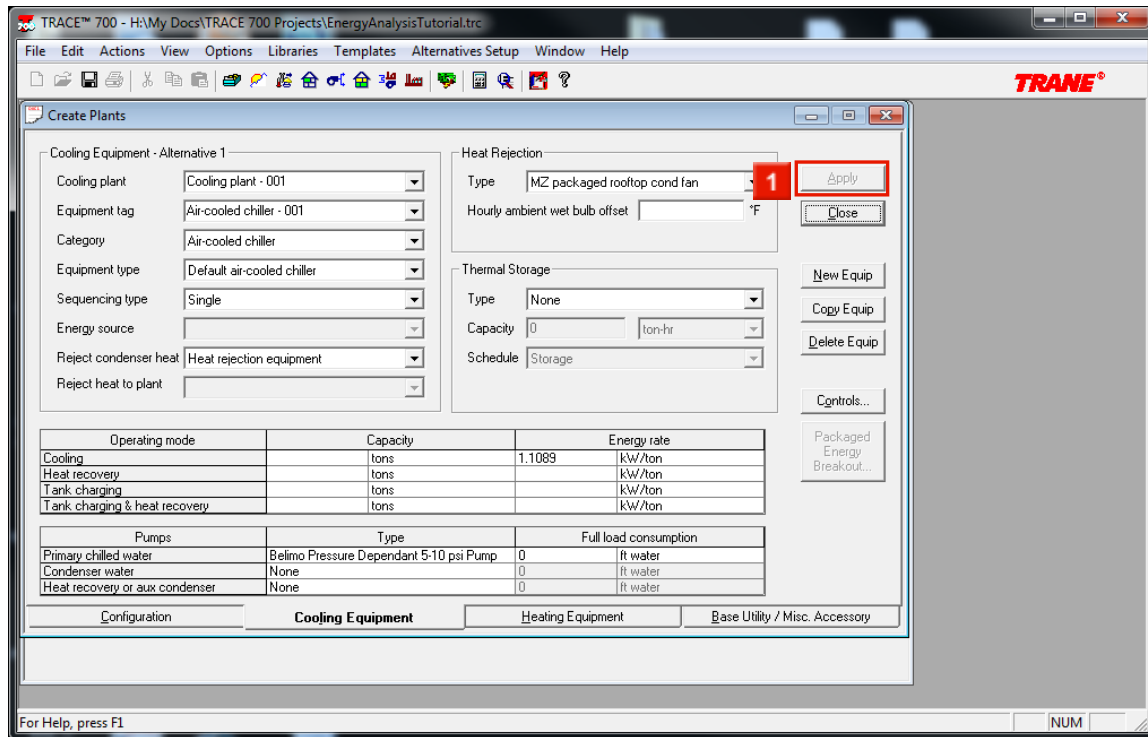
1 Double-click on Plants.



1 At the bottom of the screen click Cooling Equipment.



1 Select the **Belimo Pressure Dependent 5-10 psi Pump**.



1 Click the **Apply** button.

Please run the model again using the Belimo pressure dependent pump curves and compare it to the base model to see the pump savings.