

Damper actuator for adjusting air control dampers in ventilation and air-conditioning systems for building services installations

- Torque 16Nm
- Nominal voltage AC/DC 24V
- Control: Open-close
(not made for 3-point applications)
- Running time 7s



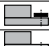

Technical data

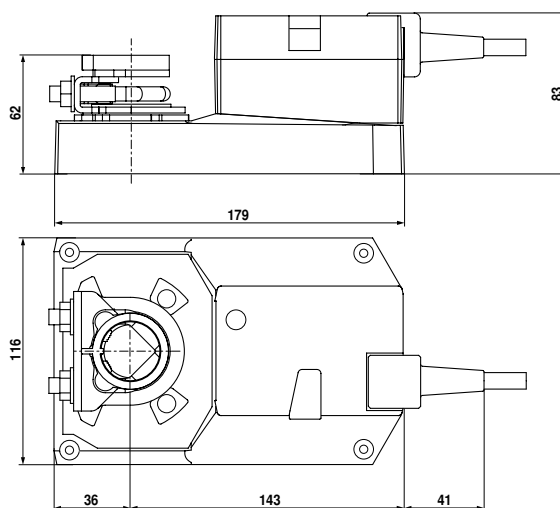
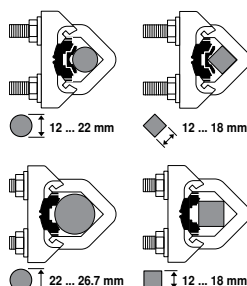
Electrical data	Nominal voltage	AC 24V, 50/60Hz / DC 24V
	Nominal voltage range	AC 19.2...28.8V / DC 21.6...28.8V
	Power consumption	In operation 15W @ nominal torque At rest 2W For wire sizing 26VA (I max. 20 A @ 5 ms)
	Connection	Cable 1m, 3 x 0.75mm ²
Functional data	Torque (nominal torque)	Min. 16Nm @ nominal voltage
	Direction of rotation	Reversible with switch 0 ↺ resp. 1 ↻
	Manual override	Gearing latch disengaged with pushbutton, can be locked
	Angle of rotation	Max. 95°↺, can be limited at both ends with adjustable mechanical end stops
	Angle of rotation limiting	min. 30°↺
	Running time	7s / 90°↺
	Automatic adjustment of operating range to match the mechanical angle of rotation	Manual triggering of the adaption by pressing the «Adaption» button
	Sound power level	63dB(A)
	Position indication	Mechanical, pluggable
	Negative torque	⚠ ≤50% from nominal torque (with restrictions)*
Safety	Protection class	III Safety extra-low voltage, UL Class 2 Supply
	Degree of protection	IP54 in any mounting position, NEMA 2, UL Enclosure Type 2
	EMC	CE according to 2004/108/EC
	Certification	Certified to IEC/EN 60730-1 and IEC/EN 60730-2-14 cULus according to UL 60730-1A and UL 60730-2-14 and CAN/CSA E60730-1:02
	Mode of operation	Type 1
	Rated impulse voltage	0.8kV
	Control pollution degree	3
	Ambient temperature	–30...+40°C (no restrictions) ⚠ +40...+50°C (with restrictions)*
	Non-operating temperature	–40...+80°C
	Ambient humidity	95% r.H., non-condensating
Dimensions / Weight	Maintenance	Maintenance-free
	Dimensions	See «Dimensions»
	Weight	Approx. 1.9kg

* Under these operating conditions, the lift cycle of actuator will be reduced. Please contact your Belimo representative for details

Dimensions [mm]

Dimensional drawings

Damper spindle	Length	⊙	■	◆
	≥52	12...26.7	≥12	≤25.5
 *	≥20	12...26.7	≥12	≤25.5



* When using an auxiliary switch or feedback potentiometer.

UL marked actuators is optional, please contact your local Sales Representative for details.