

Selection RB2.. Fan Coil Valves, 2-way; RB3.. Fan Coil Valves, 3-way

Kvs m ³ /h	DN		Type		Actuator
	mm	Imp.	2-way	3-way	
1.5	15	1/2"	RB215	RB315	FRU24
4.0	20	3/4"	RB220	RB320	
8.0	25	1"	RB225	RB325	

Technical data

Actuator	FRU24
Rated voltage	AC/DC 24V
Power consumption	0.5W
Running time	100s
Torque	Min. 2Nm (with normal voltage)
Manual override	Pushing knob
Valve assembly	Belimo one screw solution
Position indicator	Plastic knob marking
Ambient temperature range	+5...+50°C
Temperature of medium	+5...+100°C
Non-operating temperature	-5...+80°C
Humidity test	95% RH, non condensing according to EN 60730-1
EMC	CE according to 89/336/EEC
LV Directive	CE according to 73/23/EEC
Degree of protection	IP40
Weight	0.4kg
Valves	RB215, RB220, RB225; RB315, RB320, RB325
Media	Cold and warm water
Rated pressure	2000kPa
Pipe connection	Internal thread ISO7/1
Close off pressure	600kPa
Temp. range of medium	+5°C...+100°C
Angle of rotation	90°
Materials	
Body	Forged brass
Ball	Stainless steel
Spindle	Chromed Brass
Valve seat	PTFE
O-ring	EPDM

Subject to technical changes

Fan Coil Valve and actuator solution



2-way Fan Coil Valves DN15...25



3-way Fan Coil Valves DN15...25

Rotary Actuator for 2-way and 3-way Fan Coil Valves
Open/Close & floating control (AC/DC 24V)

Application

Room temperature fan coil control in heating or cooling system

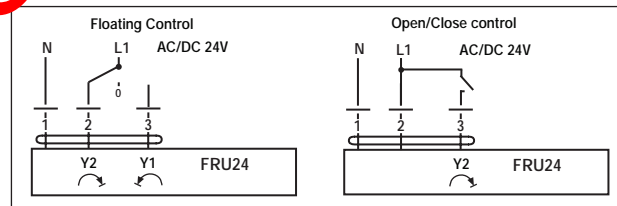
Product features

Simple direct mounting on the RB... Fan Coil Valve by means of a single screw. The actuator can be mounted on the ball valve in any of four 90° positions.

Manual operation

by knob (press and turn for temporary disengagement). **Keep power off while manual operation.**

Wiring

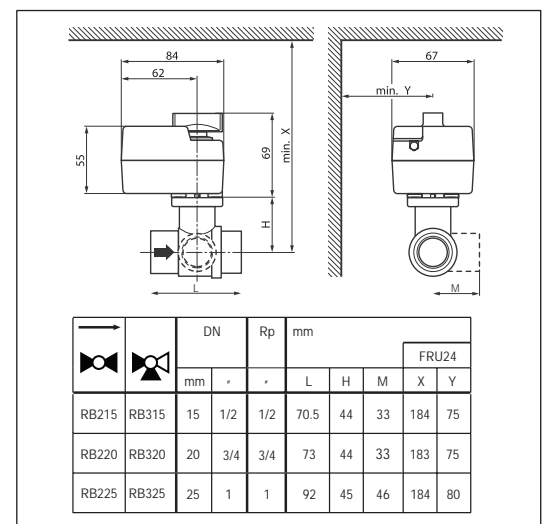


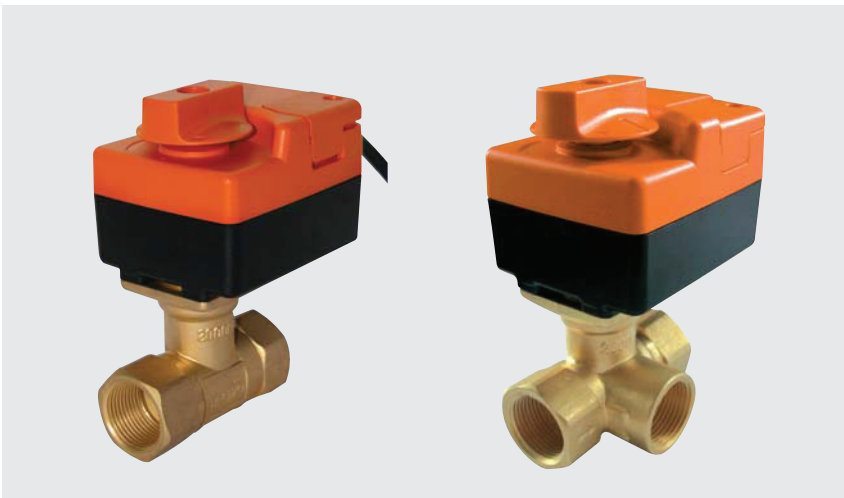
Refer to CF230... thermostat datasheets in application.

Advantages

- High close-off pressure: 600kPa
- Easy to install
- Low sound power level
- Leakage rate: tight sealing
- Long life cycles
- No water hammer
- Matching with Belimo new CF230... thermostat

Installation dimension: FRU24+RB..





Selection RB2.. Fan Coil Valves, 2-way; RB3.. Fan Coil Valves, 3-way

Kvs m ³ /h	DN		Type		Actuator
	mm	Imp.	2-way	3-way	
1.5	15	1/2"	RB215	RB315	FRU230-3
4.0	20	3/4"	RB220	RB320	
8.0	25	1"	RB225	RB325	

Technical data

Actuator	FRU230-3
Rated voltage	AC 230V (50 Hz)
Power consumption	1.0W
Running time	105s
Torque	Min. 2Nm (with normal voltage)
Manual override	Pushing knob
Valve assembly	Belimo one screw solution
Position indicator	Plastic knob marking
Ambient temperature range	+5...+50°C
Temperature of medium	+5...+100°C
Non-operating temperature	-40...+80°C
Humidity test	95% RH, non condensing according to EN 60730-1
EMC	CE according to 89/336/EEC
LV Directive	CE according to 73/23/EEC
Degree of protection	IP40
Weight	0.4kg
Valves	RB215, RB220, RB225; RB315, RB320, RB325
Media	Cold and warm water
Rated pressure	2000kPa
Pipe connection	Internal thread ISO7/1
Close off pressure	600kPa
Temp. range of medium	+5°C...+100°C
Angle of rotation	90°
Materials	
Body	Forged brass
Ball	Stainless steel
Spindle	Chromed Brass
Valve seat	PTFE
O-ring	EPDM

Fan Coil Valve and actuator solution



2-way Fan Coil Valves DN15...25



3-way Fan Coil Valves DN15...25

Rotary Actuator for 2-way and 3-way Fan Coil Valves
Open/Close & floating control (AC 230V)

Application

Room temperature fan coil units in heating or cooling system

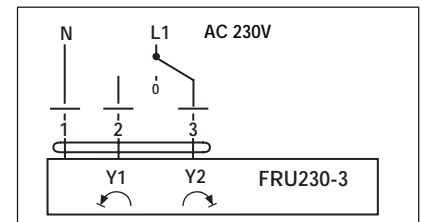
Product features

Simple direct mounting on the RB... Fan Coil Valve by means of a single screw. The actuator can be mounted on the ball valve in any of four 90° positions.

Manual operation

by knob (press and turn for temporary disengagement). **Keep power off while manual operation.**

Wiring



Refer to CF230... thermostat datasheets in application.

Advantages

- High close-off pressure: 600kPa
- Easy to install
- Low sound power level
- Leakage rate: tight sealing
- Long life cycles
- No water hammer
- Matching with Belimo new CF230... thermostat

Installation dimension: FRU230-3+RB..

