

# Small Devices, Big Impact.

Belimo  
Company presentation  
2025



# Our products

## Seamless integration of innovative HVAC field-devices



### Damper actuators



- Non fail-safe actuators
- Fail-safe actuators
- Actuators for harsh environmental conditions
- Fast running actuators
- Linear actuators
- Fire damper actuators
- Smoke control damper actuators
- Variable air volume

### Sensors / Meters



- Duct sensors (Air)
- Pipe sensors (Water)
- Outdoor sensors (Air)
- Room units
- Thermal Energy Meters (TEM)
- Belimo Energy Valve™ with TEM

### Control valves



- Energy Valves
- Pressure-independent control valves
- Zone valves
- Characterised control valves
- Ball valves
- Butterfly valves
- Globe valves
- Potable water valves

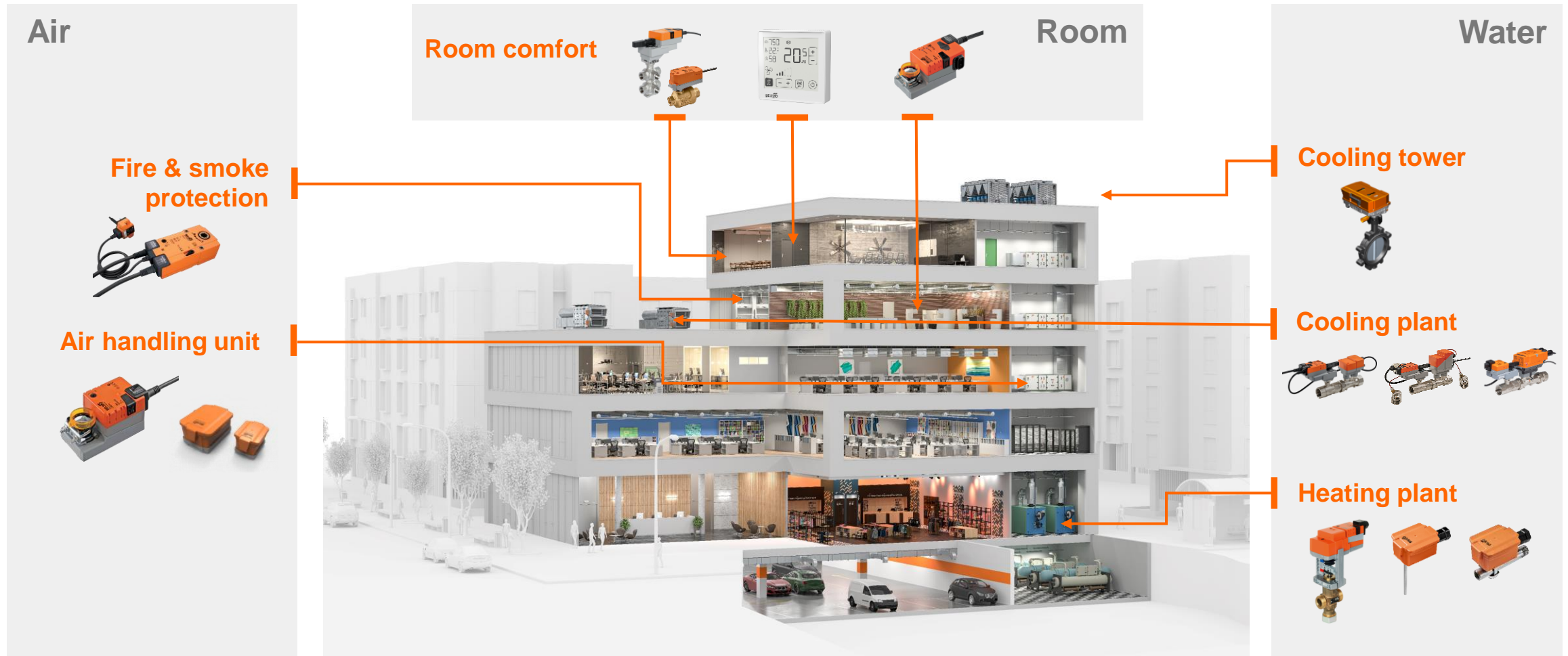
### RetroFIT+



- Damper actuators
- Control valve/actuators
- Butterfly valve/actuators
- Globe valve/actuators
- Variable air volume

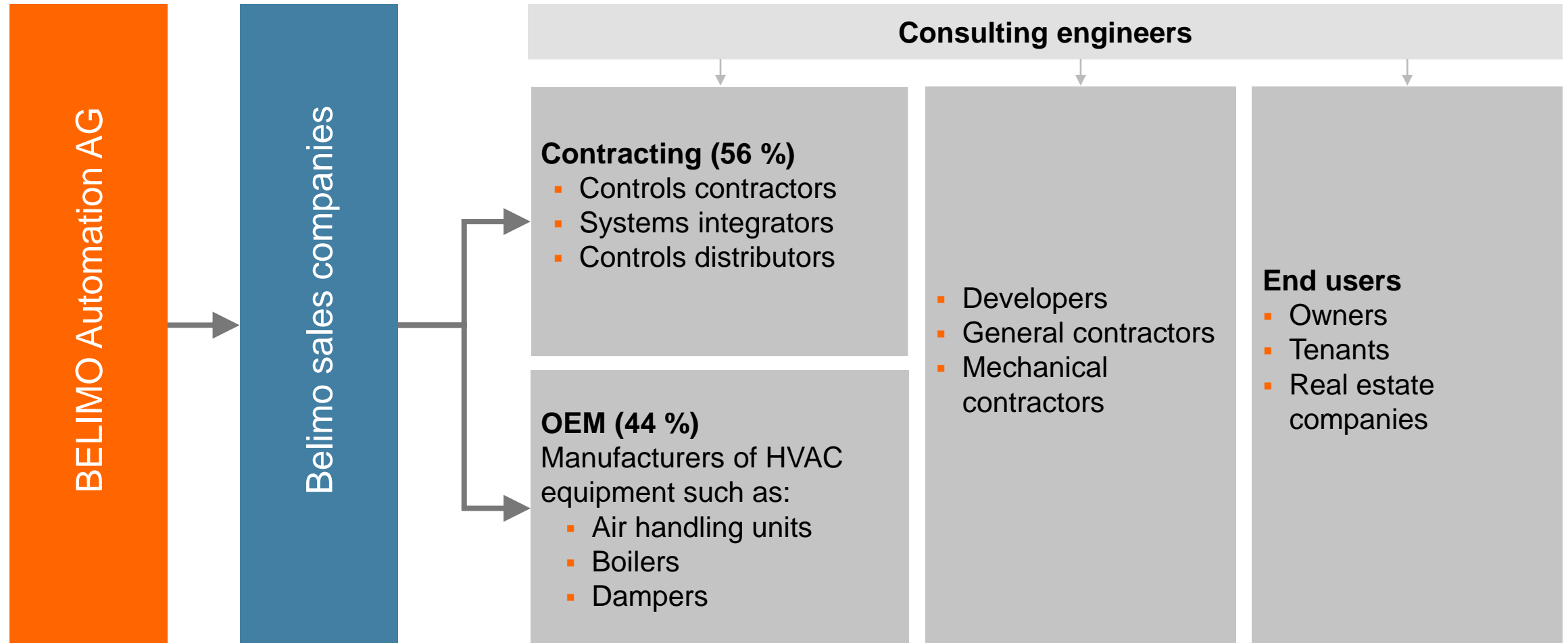
# Applications

## Heating, ventilation and air conditioning in buildings



# We serve two main channels in HVAC

## OEM and contracting



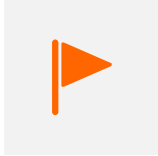
# End-customer segments

Belimo products in every third commercial building



# Belimo company facts

## Successful by focusing on HVAC field devices



Founded: 1975  
Headquarters: Hinwil, Switzerland

---



Listed on the Swiss Stock  
Exchange since 1995.

---



About 10 million products are shipped  
every year by the subsidiaries  
worldwide.

---



More than 2'400 employees  
worldwide in over 80 countries on  
all continents.

---



We invest over 7% of our sales  
every year in research and  
development.

---



Global market leader in the  
development and production of field  
devices for the regulation and control  
of HVAC systems.

---

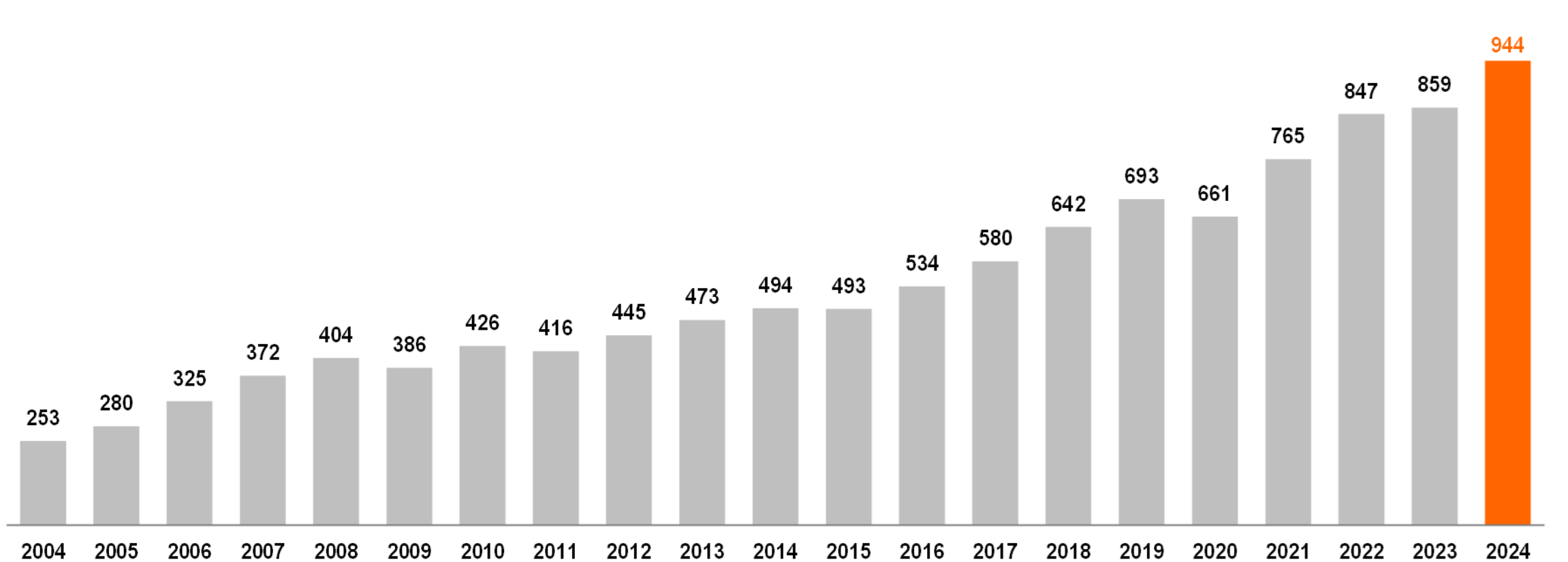
# Our key figures

## A continuous success story



### Net sales 2004-2024

In CHF million

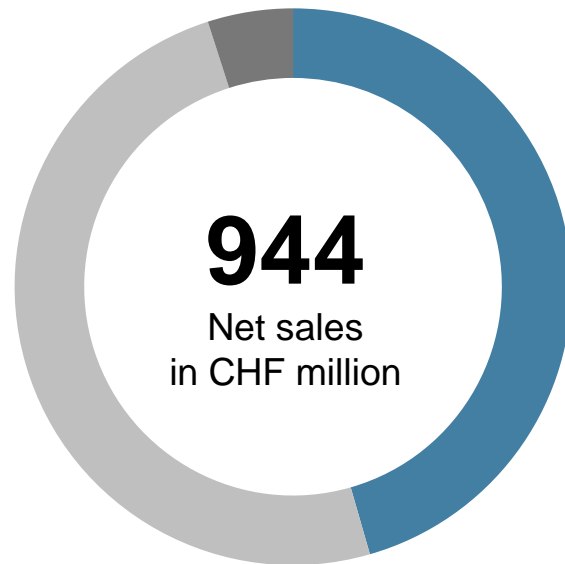


# Our key figures

We are the market leader in field-devices

## Net sales by application

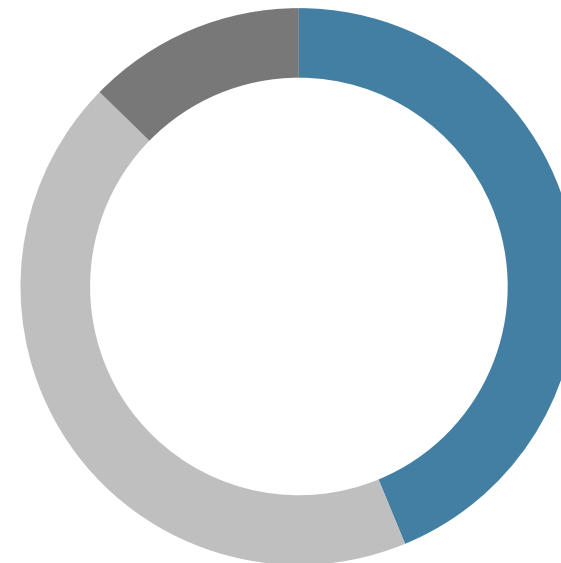
In %



- 431'666 Damper Actuators
- 468'043 Control Valves
- 44'152 Sensors and Meters

## Net sales by region

In %



- 41 EMEA
- 46 Americas
- 13 Asia Pacific



# Executive Committee

A leadership team with over 130 years of HVAC experience



**Jim Furlong**  
Head of Americas

**Dr. Adrian Staufer**  
Head of EMEA

**Dr. Elena Cortona**  
Chief Technology  
Officer

**Dr. Markus Schürch**  
Chief Financial Officer

**Lars van der Haegen**  
Chief Executive Officer

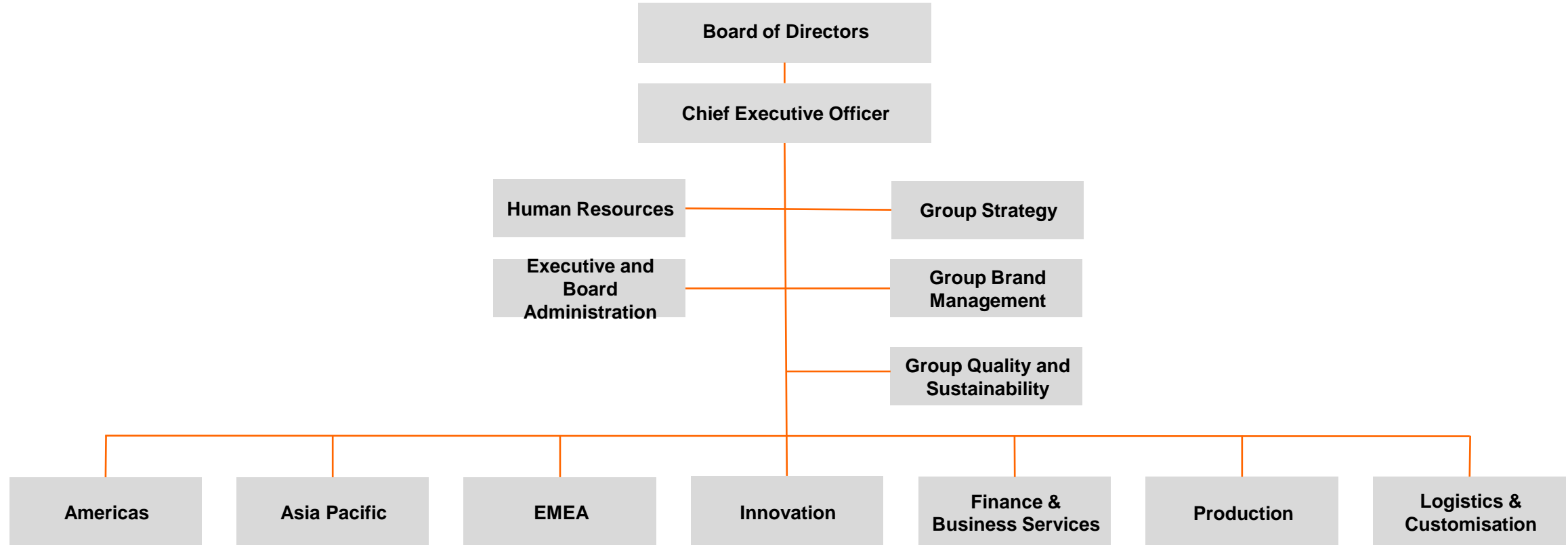
**Louis Scheidegger**  
Head of Group  
Division Production

**Gary Economides**  
Head of Asia Pacific

**Sandra Pitt**  
Chief Human  
Resources  
Officer

# Group structure

Three strong regions supported by global functions



# Sites around the Globe

Close to our customers. In more than 80 countries.



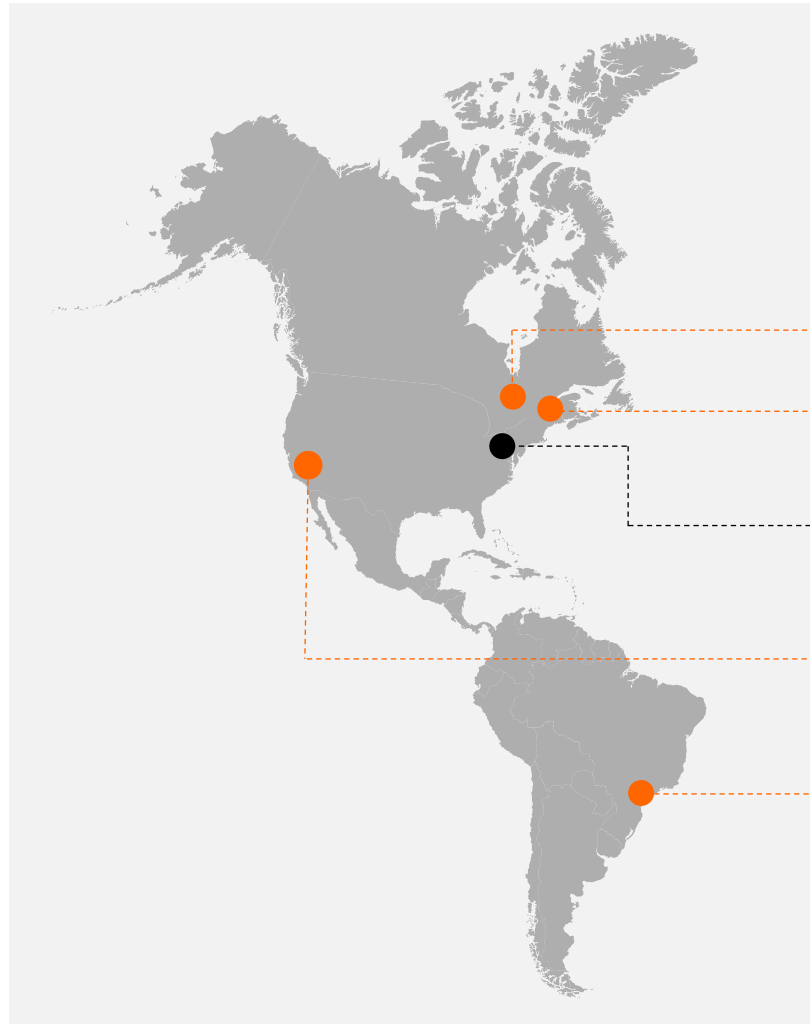
- 
- Regional headquarters
  - Subsidiaries
  - Representatives, Franchising partners
-

# Americas locations

Over 600 Belimo people serving our customers



- Regional headquarters
- Subsidiaries



Mississauga, Ontario, Canada

**Belimo Canada**  
Office and Warehouse

Dorval, Quebec, Canada

**Belimo Sensors**  
Office, Production, and Warehouse

**Danbury, CT USA**

**Belimo Americas regional headquarters**  
Office, Production, and Logistics & Customisation Hub  
18'395 sq m

Sparks, NV USA

**Belimo Americas**  
Office, Logistics & Customisation Hub  
1'844 sq m

Sao Paulo, Brazil

**Belimo Brazil**  
Office and Logistics Hub



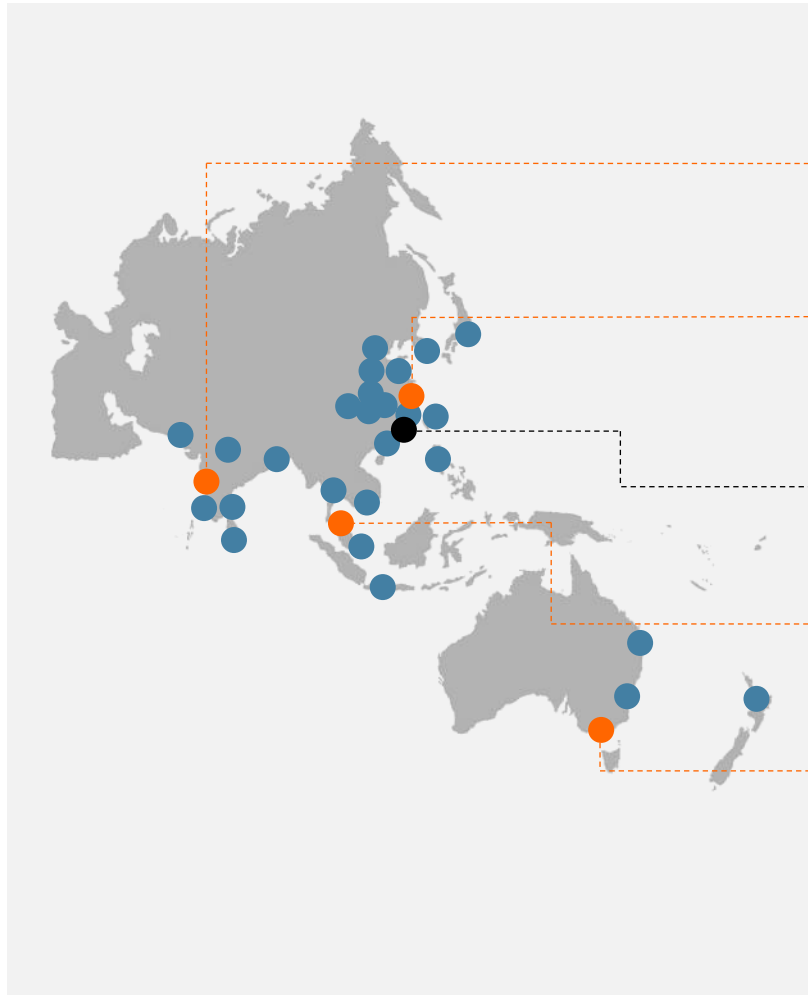
**Total Americas employees:**

**601**

# Asia Pacific locations

## Fast growing Belimo organisation

Regional headquarters
  Subsidiaries
  Representatives, Franchising partners



Mumbai, India

**Belimo India**  
Office, Logistics & Customisation Hub  
2'000 sq m

Shanghai, P.R. China

**Belimo China**  
Office, Logistics & Customisation Hub  
19'615 sq m

Hong Kong, P.R. China

**Belimo Asia Pacific regional headquarters**  
Office, Logistics & Customisation Hub  
1'900 sq m

Kuala Lumpur, Malaysia

**Belimo Malaysia**  
Office, Logistics & Customisation Hub  
1'355 sq m

Melbourne, Australia

**Belimo Australia**  
Office, Logistics & Customisation Hub  
1'090 sq m

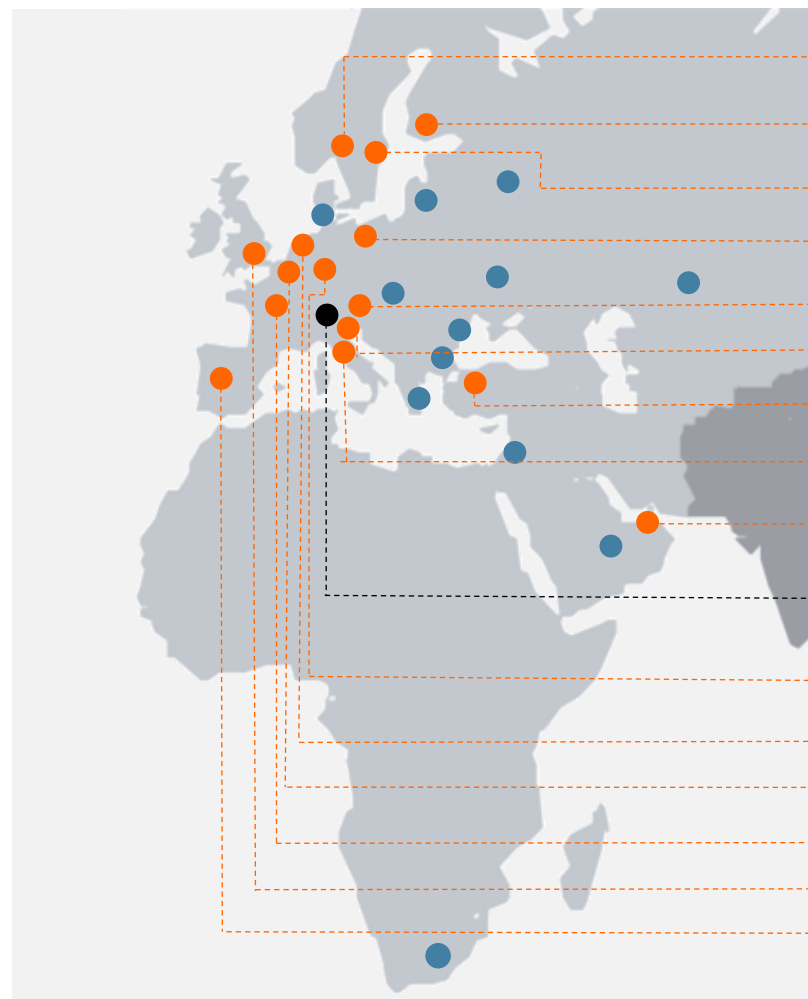


**Total Asia Pacific employees:**

**383**

# EMEA locations

## Covering the EMEA market



- Belimo Norway
- Belimo Finland
- Belimo Sweden
- Belimo Poland
- Belimo Austria
- Bereva
- Belimo Turkey
- Belimo Italy
- Belimo UAE
- Belimo Switzerland**
- International Headquarters**
- Belimo Germany
- Belimo Netherlands
- Belimo Belgium
- Belimo France
- Belimo United Kingdom
- Belimo Spain

- Regional headquarters
- Subsidiaries
- Representatives, Franchising partners



**Total Belimo Europe employees:**

**1'468**

# Our history

## Key milestones of our 50-year long history



1975

Foundation of BELIMO  
Automation AG  
Switzerland



1976

Creation of first direct  
coupled actuator



1984

Introduction of the  
variable air volume  
controllers (VAV)

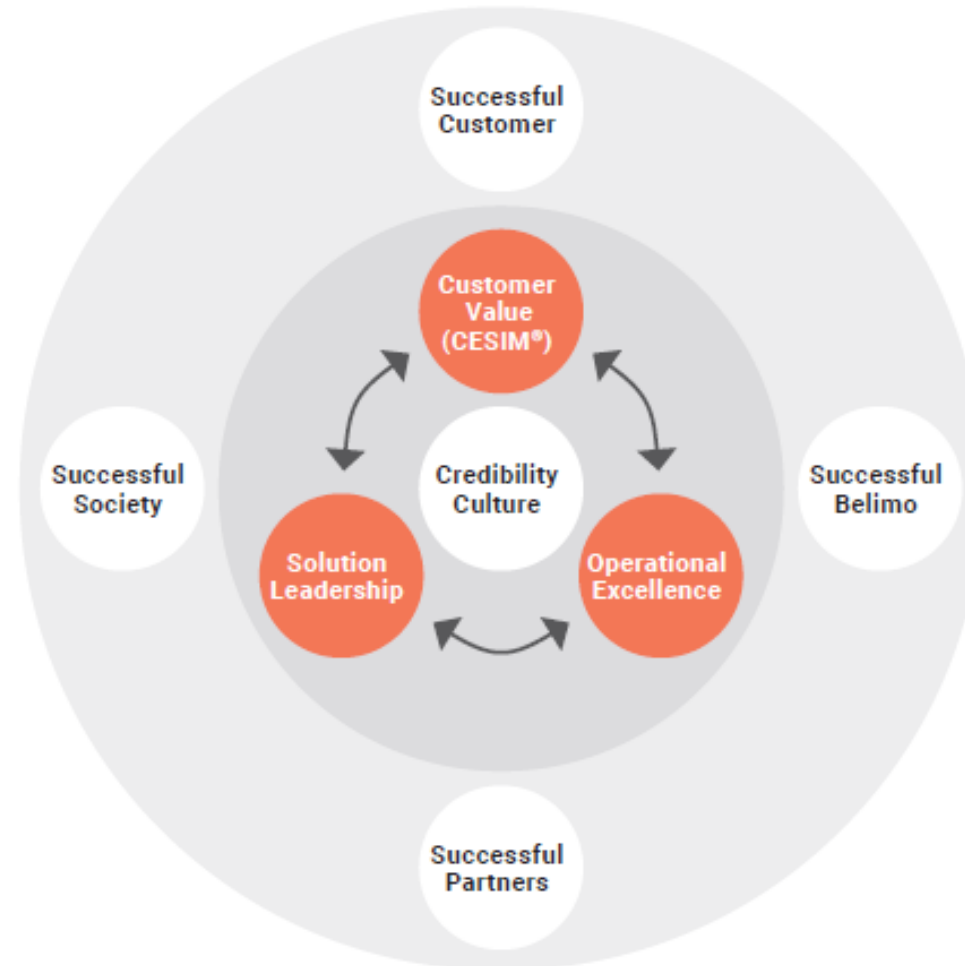


1992

Introduction of the  
brushless direct current  
motor. Actuators contain  
a microprocessor for the  
first time.

# Belimo value creation model

Successful customers ultimately lead to a successful Belimo





# Operational excellence

## Partnership with suppliers

Sourcing (Suppliers)

Assembly (Belimo)

Logistics & Customisation  
(Belimo)

88% of production costs

8%

4%



# Operational excellence

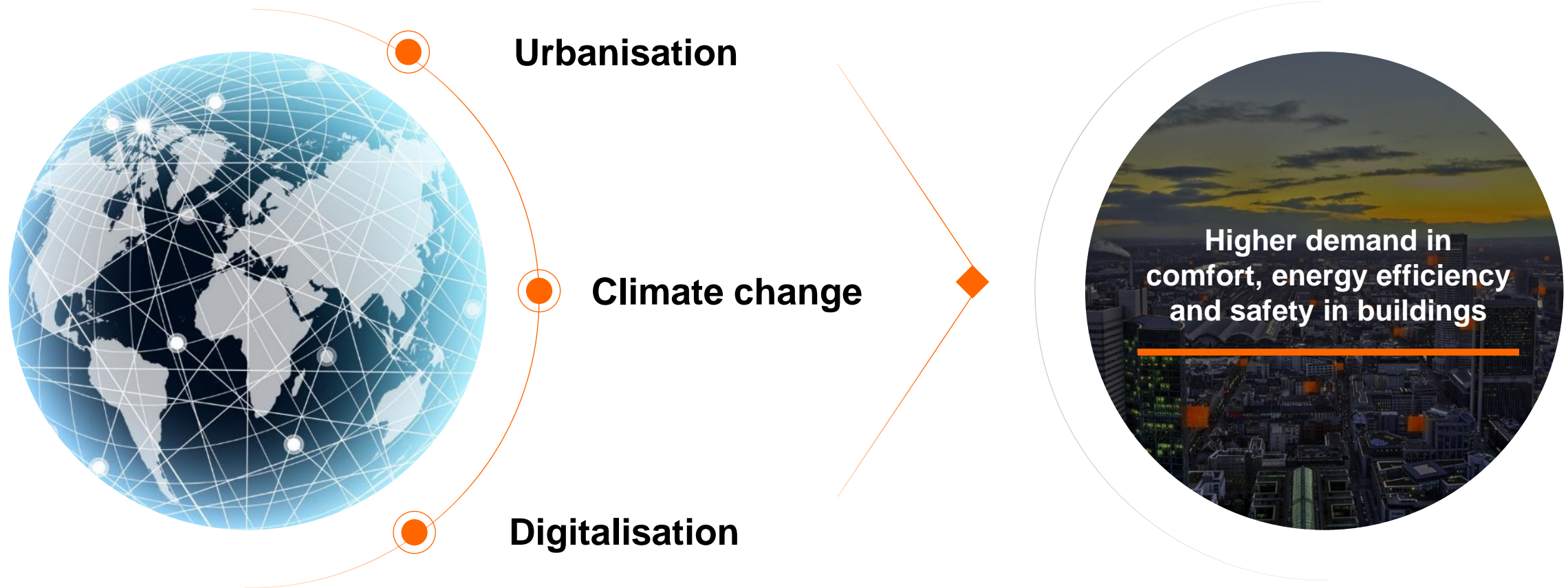
## Our commitment to quality



- Every actuator is extensively tested before delivery. About 8.0 million actuators are shipped every year by the subsidiaries worldwide.
- Our specialised know-how and the "Swiss quality" make a five-year warranty on the entire range possible.

# Megatrends

Driving higher demand in comfort, energy efficiency and safety



# Sustainability Targets

Committed to net-zero greenhouse gas emissions at the latest by 2050



SCIENCE  
BASED  
TARGETS

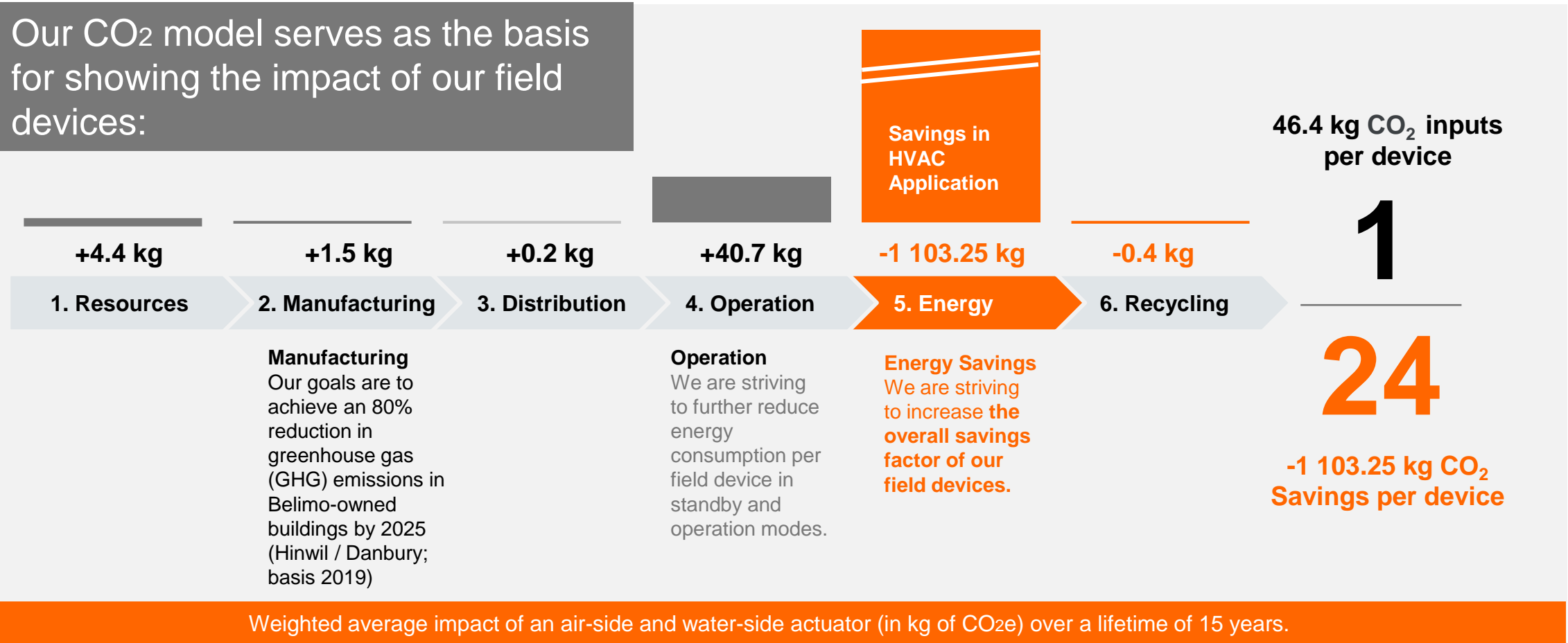
DRIVING AMBITIOUS CORPORATE CLIMATE ACTION

- In 2024, Belimo has committed to achieving net-zero greenhouse gas (GHG) emissions at the latest by 2050 with near- and long-term reduction targets aligned with SBTi Net Zero Standard. Currently, Belimo is preparing for the validation and approval of the targets by SBTi.
- Belimo has developed a Group-wide methodology for GHG accounting. From the 2024 financial year, this balance sheet will be updated and disclosed annually as part of the external annual report. The Belimo GHG balance provides a comprehensive picture of all emissions (scope 1 to 3) caused by company activities over the course of a financial year.

# Our sustainability goals

## Quantifying our impact

Our CO<sub>2</sub> model serves as the basis for showing the impact of our field devices:



# Our purpose

## What we want to impact

### COMFORT



Create more comfort and health for people in buildings.

# C

### ENERGY



Contribute to higher energy efficiency of buildings with visible energy savings.

# E

### SAFETY



Provide technology that saves lives and minimises damage to buildings and assets.

# S

### INSTALLATION



Make installations easier and the commissioning faster.

# I

### MAINTENANCE

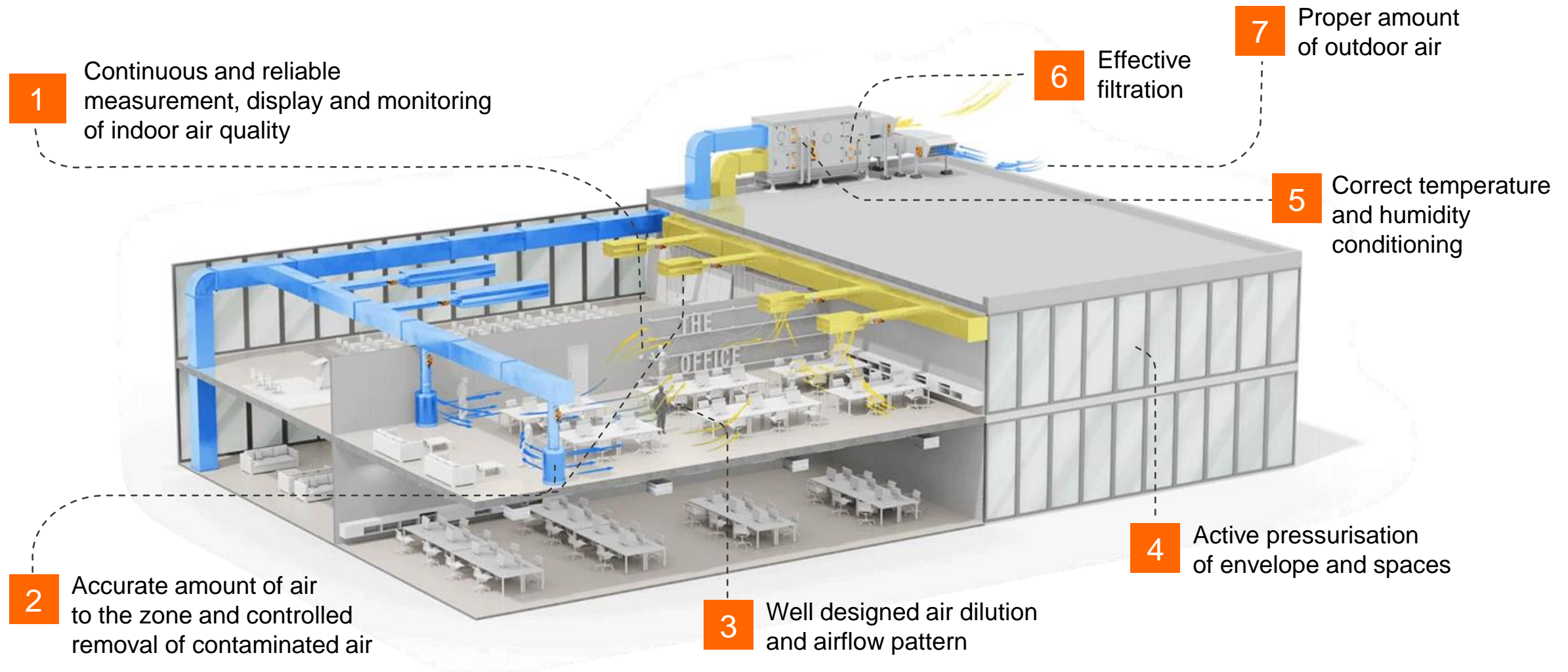


Assure long lifetimes and minimal maintenance efforts for HVAC controls equipment.

# M

# Basic requirements for HVAC systems for healthy indoor air

## 7 essentials of a healthy building



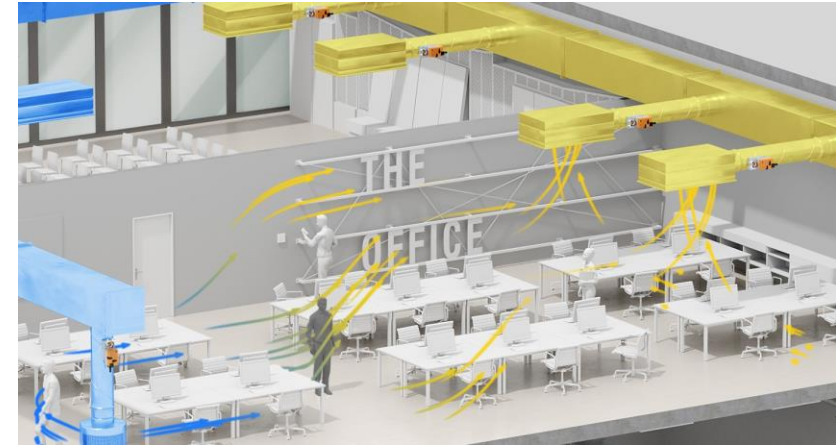
# Our contribution to “Safety” of CESIM – Healthy indoor air

For the better health of future generations



## Belimo contributes to healthy indoor air with:

- Accurate and reliable room and duct sensors
- VAV solutions for demand-controlled ventilation
- Fast-acting actuators and tightly closing valves
- Belimo Energy Valve™ for precise and stable control, energy measurement and monitoring
- Seamless BMS and cloud-platform integration





# Application examples

## Air handling units

**Belimo devices enable the precise and efficient conditioning of air in buildings, for example:**

- Actuators safely control outdoor air or bypass dampers
- Temperature, humidity and air quality sensors measure room comfort
- Pressure sensors ensure the right airflow and identify dirty filters



# Application examples

## Heating water plants

**Belimo devices control the generation and the flow of hot water in a building in an energy-efficient way, for example:**

- Temperature sensors measure the condition of the supply and return water
- Energy Valves control and monitor the flow of thermal energy to the building
- Butterfly valves stage hot water boilers based on demand
- Pressure sensors ensure sufficient water pressure in the piping system



# Application examples

## Fire & smoke protection

**Belimo safety actuators save lives and help to minimise damage to buildings and tangible assets, for example:**

- Fire damper actuators seal off fire-rated compartments against the spread of fire and smoke through ventilation ducts.
- Smoke control damper actuators enable mechanical smoke extraction from escape and rescue routes.



# Application examples

## Controlling room comfort

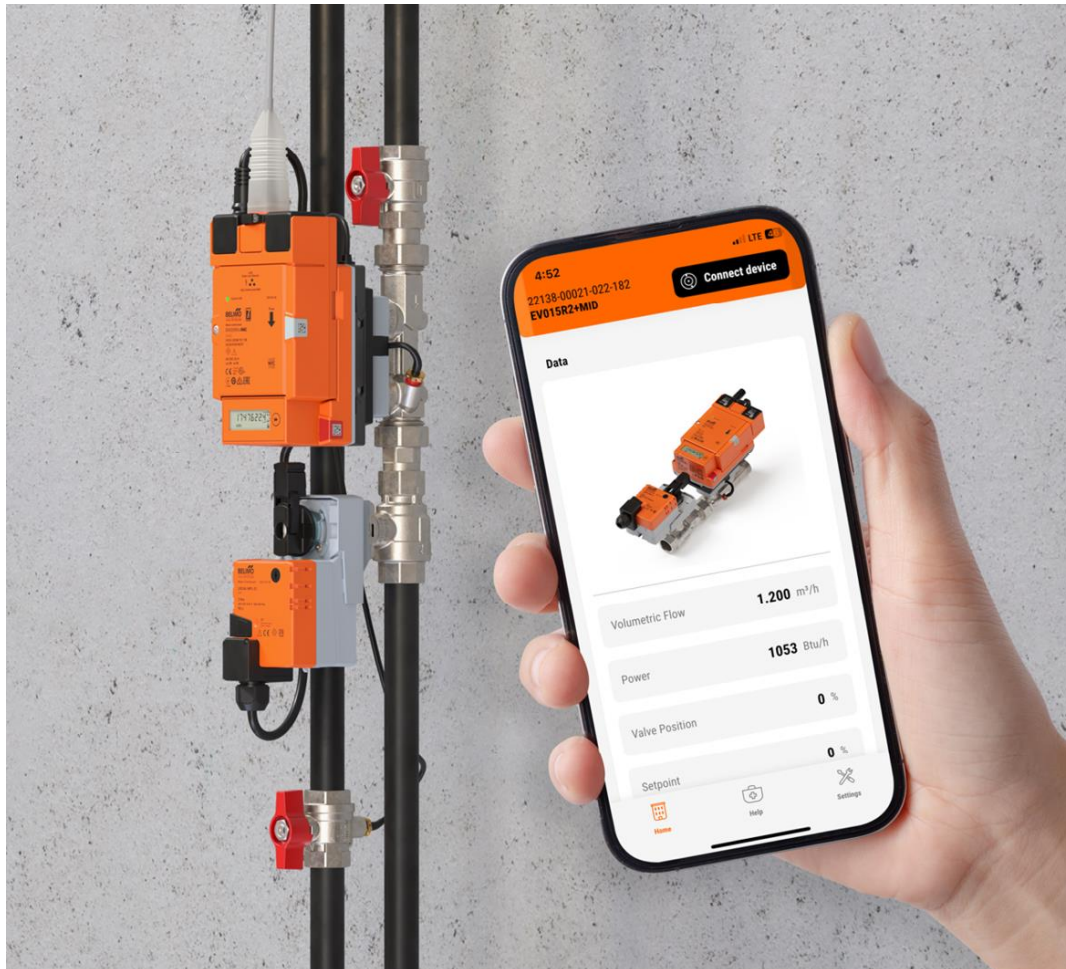
**Belimo devices provide a comfortable room environment that is essential for the well-being and productivity of people:**

- Room sensors measure the temperature, humidity and air-quality in the room
- Variable Air Volume actuators provide the right amount of fresh air to the room
- 6-way valves precisely control the flow of cold/hot water in a chilled/heated ceiling
- ZoneTight valves control water flow to a fan coil and close it completely tight if no demand exists



# Solution leadership in HVAC field devices

## New era of integrated thermal energy management

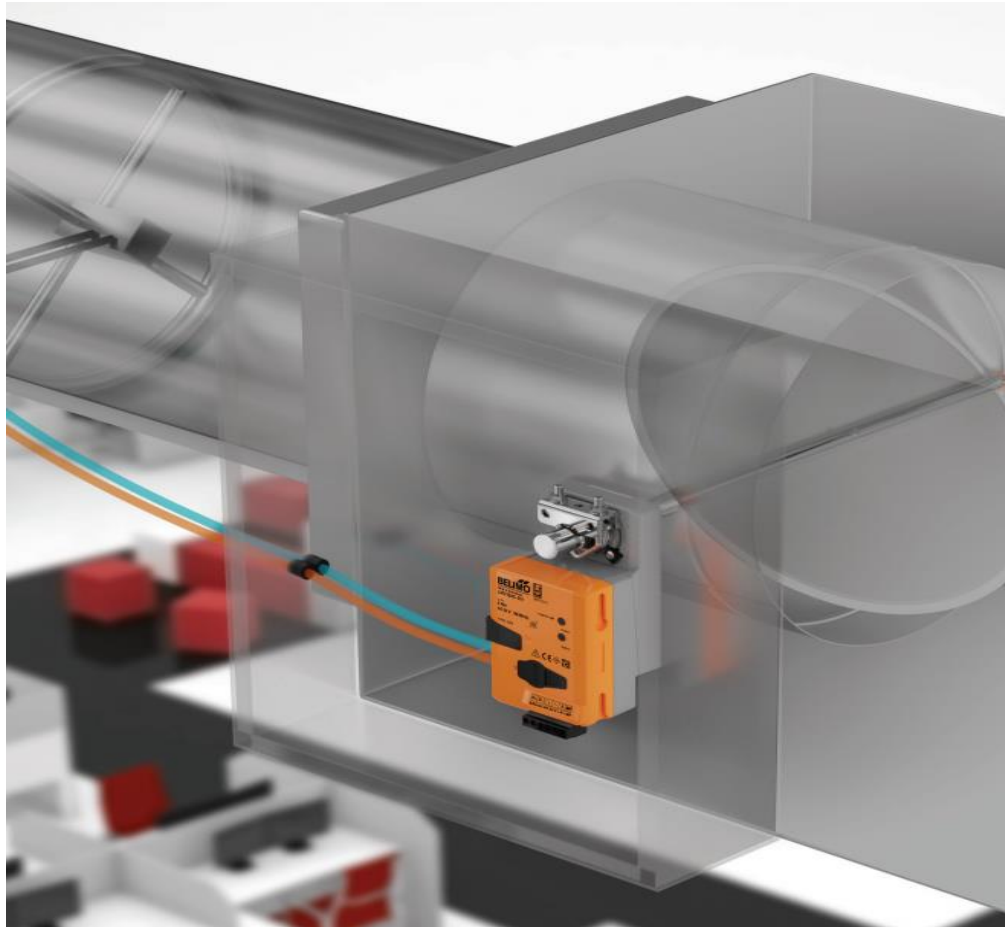


### Belimo Energy Valve™ with the Thermal Energy Meter (TEM)

It integrates energy measurement and control, delta T management, and IoT-enabled billing in one device. It offers seamless and direct integration to the BMS or IoT-based monitoring platforms. Energy measurement and control with certified energy measurement and billing are united. It brings together performance features to save you time and costs.

# Solution leadership in HVAC field devices

Innovations in air for the success of our customers



## Belimo ZoneEase™ VAV

The most innovative VAV-solution to simplify the commissioning process.

It provides commissioning support via the cloud and the Belimo Assistant App. ZoneEase™ substantially reduces project complexity and commissioning time and automatically documents all configuration settings. The progress of a VAV job gets fully transparent.

# Solution leadership in HVAC field devices

## Innovations in sensors for the success of our customers

### Room sensors and operating units

The foundation of comfort



- Timeless design
- Fast installation
- Easy configuration
- Short reaction time
- De-energised configuration via smartphone\*
- Intuitive diagnostic function via smartphone\*

\* for active devices

### Belimo ultrasonic flow sensor

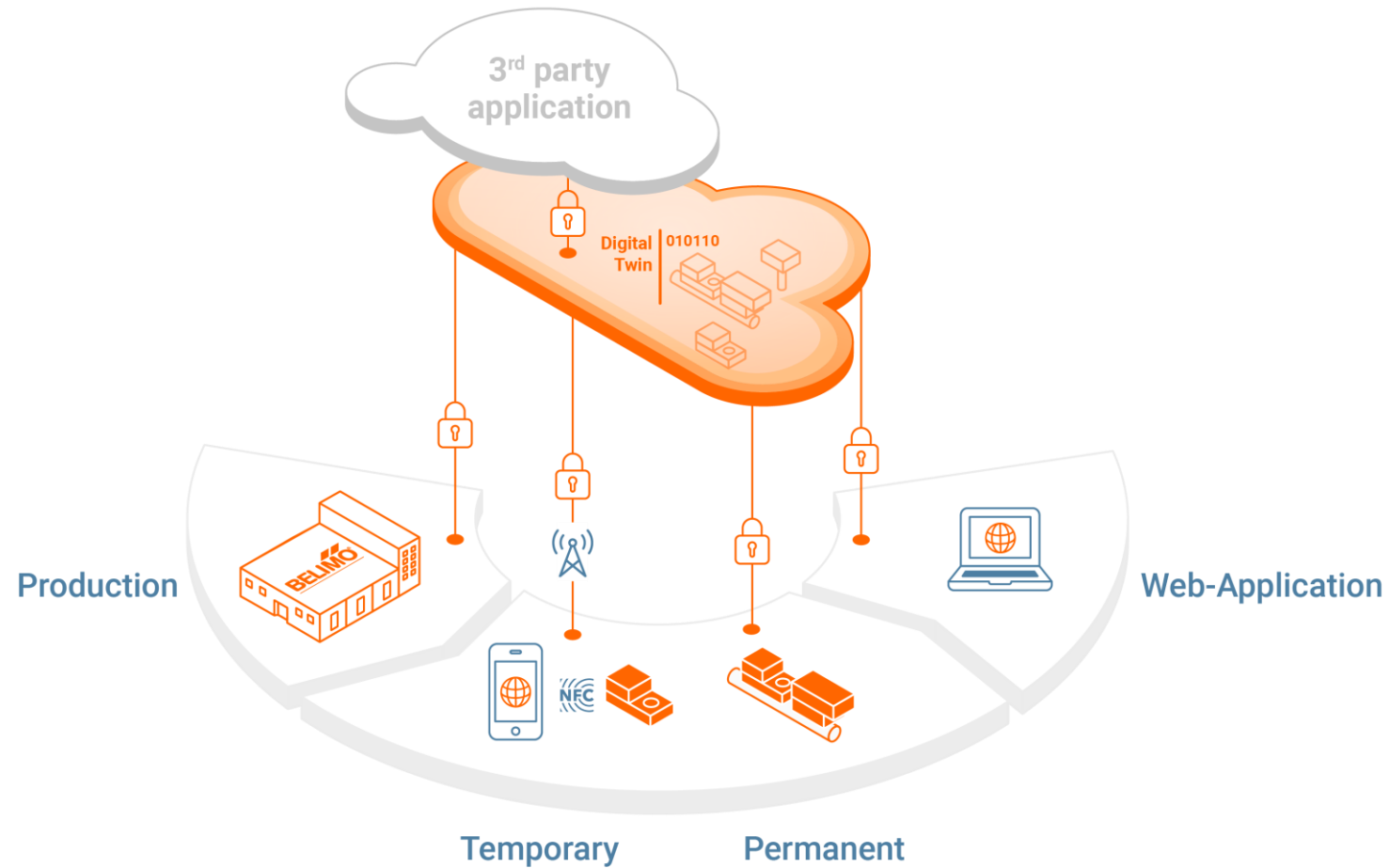
Flow measurement that you can trust



- Accurate and reliable
- Patented temperature and glycol compensation logic
- Compact design
- Easy installation
- Accurate results without drift

# Solution leadership

## Belimo IoT-ready products and the Belimo eco-system





# Belimo RetroFIT+

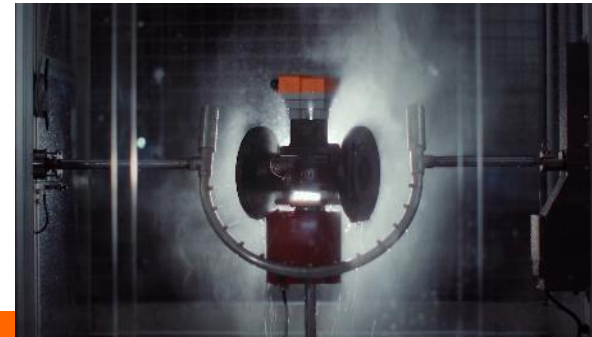
## The best replacement solution

- Our RetroFIT+ product replacement tool enables you to find retrofit products based on various parameters. It is a quick and straightforward tool providing fast HVAC replacement solutions.
- The Belimo RetroFIT+ product replacement tool is available as an App. The App is free and can be downloaded from the iTunes store or Google Play.



# Belimo added values

## More than just products



We are where you need us, speak your language and understand you.

Complete product range with shortest delivery time in the industry.

5-year warranty and tested quality.

Award-winning service to assist customers quickly and effectively, remotely or on site.

# Credibility culture

## Hands-on training in Belimo Experience Centers



# Belimo film channel

More films on [www.YouTube.com/@Belimo\\_Global](http://www.YouTube.com/@Belimo_Global)



Company film



Our commitment to quality



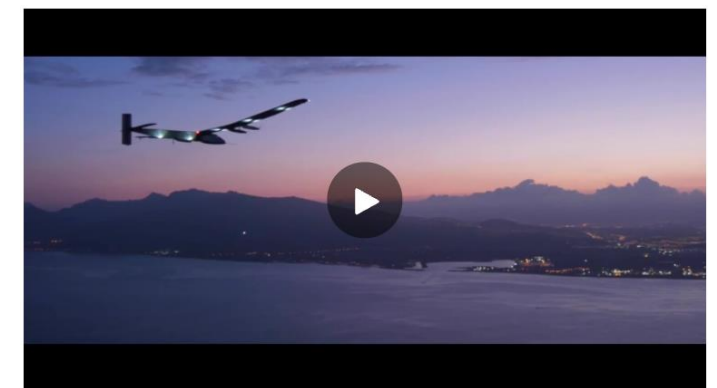
Creating customer value with CESIM



Product launch - new generation Butterfly Control Valve



Efficiency made easy: a Belimo Energy Valve™ story



Awarded the Solar Impulse Efficient Solution Label



Installation

Comfort

Maintenance

Small Devices,  
Big Impact.

Energy Efficiency

Safety



**BELIMO®**

---