

Actuator for smoke control dampers
90°

- Nominal torque 15 Nm
- Nominal voltage AC 230 V
- Control Open-close
- Spindle driver Form-fit 12 mm



PROTECT LIFE
FAIL-SAFE SOLUTIONS BY BELIMO

Technical data

Electrical data	Nominal voltage	AC 230 V
	Nominal voltage range	AC 198...264 V
	Switching thresholds min. voltage for ON	AC 198 V
	Switching thresholds max. voltage for OFF	AC 100 V
	Power consumption in operation	7 W
	Power consumption at rest	0.5 W
	Power consumption for wire sizing	14 VA
	Power consumption for wire sizing note	I _{max} 8.2 A @ 5 ms
	Auxiliary switch	2 x SPDT
	Switching capacity	1 mA, 6 (3) A, DC 5 V...AC 250 V (II totally insulated)
	Switching points	5° / 80°
	Tolerance	±2°
	Connection supply	Cable 1 m, 3 x 0.75 mm ² , halogen-free
Connection auxiliary switch	Cable 1 m, 6 x 0.75 mm ² , halogen-free	
Functional data	Torque motor	Min. 15 Nm
	Inhibiting torque dynamic	15 Nm
	Inhibiting torque static (voltage-free)	18 Nm
	Direction of rotation motor	Can be selected by mounting L / R
	Angle of rotation	Max. 95° (including 5° mechanical overrun at both sides)
	Running time motor	30 s / 90°
	Sound power level motor max.	60 dB(A)
	Spindle driver	Form-fit 12 mm
	Position indication	Mechanical, with pointer
	Service life	Min. 10,000 cycles
	Safety	Protection class IEC/EN
Degree of protection IEC/EN		IP54
EMC		CE according to 2004/108/EC
Low-voltage directive		CE according to 2006/95/EC
Certification IEC/EN		Certified to IEC/EN 60730-1 and IEC/EN 60730-2-14
Mode of operation		Type 1.B
Rated current voltage		4 kV
Control pollution degree		3
Ambient temperature		-30...50 °C
Non-operating temperature		-40...80 °C
Ambient humidity		95% r.h., non-condensing
Maintenance	Maintenance-free	
Weight	Weight approx.	2.7 kg

Safety notes



- The actuator is not allowed to be used outside the specified field of application, especially in aircraft or in any other airborne means of transport.
- Caution: Power supply voltage!
- The actuator is adapted to and installed on the smoke control damper by the damper manufacturer. For this reason, the actuator is only supplied directly to manufacturers of safety dampers. The manufacturer then bears overall responsibility for the damper function.
- The device may only be opened at the manufacturer's site. It does not contain any parts that can be replaced or repaired by the user.
- The device contains electrical and electronic components and is not allowed to be disposed of as household refuse. All locally valid regulations and requirements must be observed.

Product features

Mode of operation	2-wire open-close control. The actuator is overload-proof and can thus remain energised even at the end stops.
Signalling	Two microswitches with fixed settings are installed in the actuator for indicating the damper end positions. The position of the damper blade can be read off on a mechanical position indication.
Manual operation	The hand crank supplied with the actuator can be used for manual operation.
Standards / technical regulations	The design of the actuator is based on the specific requirements from the European standards: <ul style="list-style-type: none"> • EN 12101-8:2011 Smoke and heat control systems - Part 8: Smoke control dampers • EN 1366-10:2011 Fire resistance tests for service installations - Part 10: Smoke control dampers Safety function • EN 13501-4:2010 Fire classification of construction products and building elements - Part 4: Classification using data from fire resistance tests on components of smoke control systems

Accessories

	Description	Type
Electrical accessories	Auxiliary switch add-on, 2 x SPDT	SN2
Mechanical accessories	Adapter with clamp for rotary axes up to 20 mm for BF.. and BLF..	ZK-BF
	Adapter with DM18 rotary axis, L = 33 mm for BF.. and BLF..	ZA18-BF
	Bracket for SN1 and SN2 auxiliary switches, For BLF.. actuators	ZSN-BLF

Electrical installation

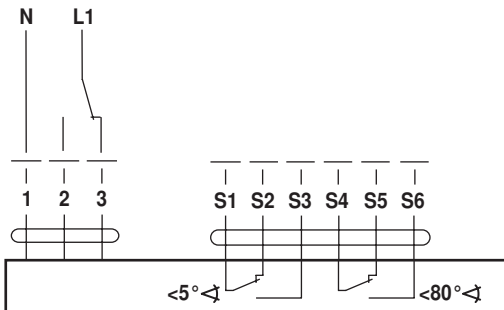


Notes

- Caution: Power supply voltage!
- Parallel connection of other actuators possible. Power consumption and switching thresholds must be observed.

Wiring diagrams

AC 230 V, open-close



Dimensions [mm]

Dimensional drawings

