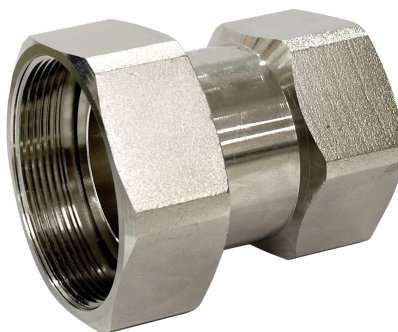


Pipe connector for EV..R2-.., EP..R2-.., 22PEM-.., 22PE-.. and 22PF-..

- internal thread Rp to internal thread G
- incl. gasket



Type Overview

Type	DN	Rp ["]	G ["]	Weight
EXT-SH-15F	15	1/2	3/4	0.121 kg
EXT-SH-20F	20	3/4	1	0.197 kg
EXT-SH-25F	25	1	1 1/4	0.25 kg
EXT-SH-32F	32	1 1/4	1 1/2	0.367 kg
EXT-SH-40F	40	1 1/2	2	0.491 kg
EXT-SH-50F	50	2	2 1/2	0.809 kg

Technical data

Materials	Used materials	Nickel-plated brass
------------------	----------------	---------------------

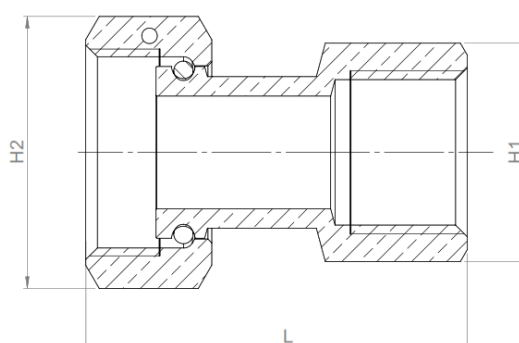
Safety notes



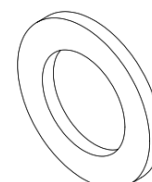
- This accessory has been designed for use in stationary heating, ventilation and air-conditioning systems and must not be used outside the specified field of application, especially in aircraft or in any other airborne means of transport.
- Only authorised specialists may carry out installation. All applicable legal or institutional installation regulations must be complied with during installation.
- The accessory may not be disposed of as household refuse. All locally valid regulations and requirements must be observed.

Dimensions

Dimensional drawings



Flat gasket
(thickness 3mm,
EPDM)



Dimensions

Type	L [mm]	H1 [mm]	H2 [mm]
EXT-SH-15F	49	28.3	35
EXT-SH-20F	58.6	32.8	42.5
EXT-SH-25F	59.2	40	49.2
EXT-SH-32F	66	49	55.5
EXT-SH-40F	70	57	67.5
EXT-SH-50F	81.5	70	86