

# Open/close valve kit for thermal energy meter 1" straight



Picture may differ from product

## Technical data

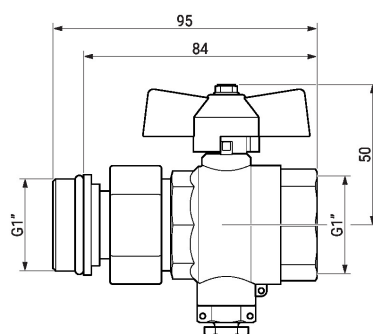
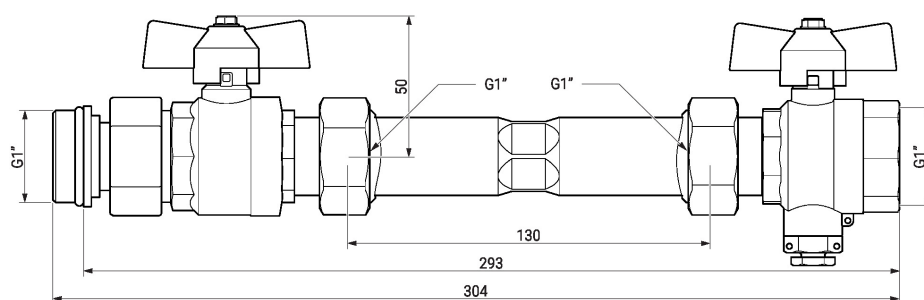
<b>Weight</b>	Weight	1.6 kg
<b>Materials</b>	Used materials	Brass CW 614 N

## Safety notes



- This accessory has been designed for use in stationary heating, ventilation and air-conditioning systems and must not be used outside the specified field of application, especially in aircraft or in any other airborne means of transport.
- Only authorised specialists may carry out installation. All applicable legal or institutional installation regulations must be complied with during installation.
- The accessory may not be disposed of as household refuse. All locally valid regulations and requirements must be observed.

## Dimensions



## Type

EXT-TT-1D

## Weight

1.6 kg