

### Shaft clamp reversible

- for NM..A, LMQ..A
- clamping range  $\varnothing 8 \dots 20$  mm



Picture may differ from product

### Technical data

<b>Weight</b>	Weight	0.15 kg
<b>Materials</b>	Used materials	Die cast zinc Galvanised steel Thermo-plastic material

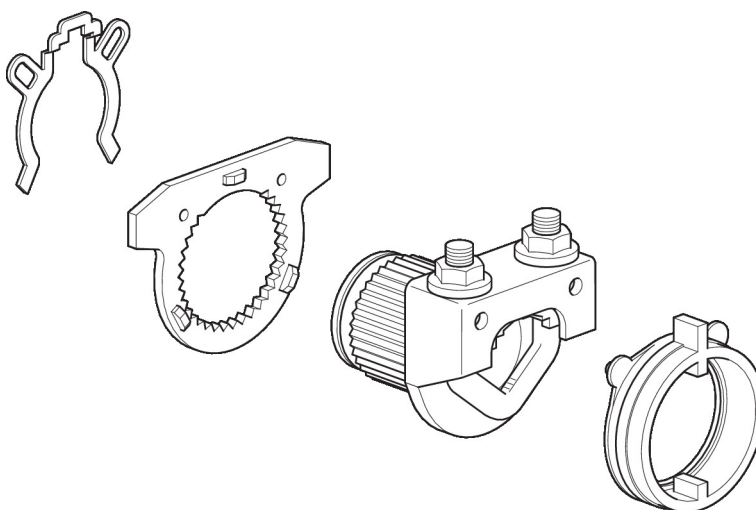
### Safety notes



- This accessory has been designed for use in stationary heating, ventilation and air-conditioning systems and must not be used outside the specified field of application, especially in aircraft or in any other airborne means of transport.
- Only authorised specialists may carry out installation. All applicable legal or institutional installation regulations must be complied with during installation.
- The accessory may not be disposed of as household refuse. All locally valid regulations and requirements must be observed.

### Product features

**Application** Suitable for LMQ..A, NM..A, NMC..A, NMD..A



### Dimensions

<b>Type</b>	<b>Weight</b>
K-NA	0.15 kg