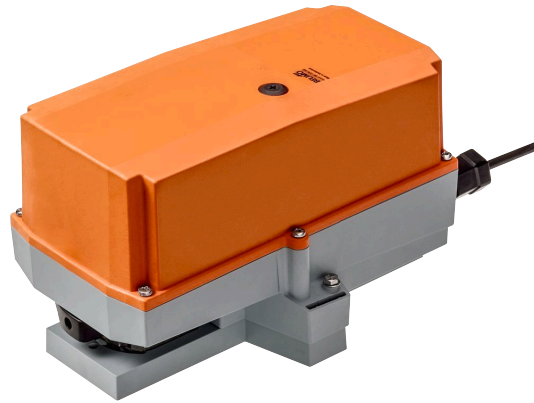


- Torque motor 20 Nm
- Nominal voltage AC/DC 24 V
- Control Open/close, 3-point
- Optimum protection against corrosion and chemical influences, UV radiation, damp and condensation



Technical data

| | | |
|------------------------|--|---|
| Electrical data | Nominal voltage | AC/DC 24 V |
| | Nominal voltage frequency | 50/60 Hz |
| | Nominal voltage range | AC 19.2...28.8 V / DC 19.2...28.8 V |
| | Power consumption in operation | 2.5 W |
| | Power consumption in rest position | 0.2 W |
| | Power consumption for wire sizing | 5.5 VA |
| | Connection supply / control | Cable 1 m, 3 x 0.75 mm ² (halogen-free) |
| | Parallel operation | Yes (note the performance data) |
| Functional data | Torque motor | 20 Nm |
| | Manual override | with push-button, can be locked |
| | Running time motor | 90 s / 90° |
| | Sound power level, motor | 45 dB(A) |
| | Position indication | Mechanical, pluggable |
| Safety data | Protection class IEC/EN | III, Safety Extra-Low Voltage (SELV) |
| | Power source UL | Class 2 Supply |
| | Degree of protection IEC/EN | IP66/67 |
| | Degree of protection NEMA/UL | NEMA 4X |
| | Enclosure | UL Enclosure Type 4X |
| | EMC | CE according to 2014/30/EU |
| | Certification IEC/EN | IEC/EN 60730-1 and IEC/EN 60730-2-14 |
| | UL Approval | cULus according to UL60730-1A, UL60730-2-14 and CAN/CSA E60730-1 The UL marking on the actuator depends on the production site, the device is UL-compliant in any case |
| | Type of action | Type 1 |
| | Rated impulse voltage supply / control | 0.8 kV |
| | Pollution degree | 4 |
| | Ambient humidity | Max. 100% RH |
| | Ambient temperature | -30...50°C [-22...122°F] |
| | Storage temperature | -40...80°C [-40...176°F] |
| Servicing | maintenance-free | |
| Mechanical data | Connection flange | F03/F04/F05 |
| | Weight | Weight |
| | | 1.8 kg |

Safety notes



- This device has been designed for use in stationary heating, ventilation and air-conditioning systems and must not be used outside the specified field of application, especially in aircraft or in any other airborne means of transport.
- Only authorised specialists may carry out installation. All applicable legal or institutional installation regulations must be complied during installation.
- Junction boxes must at least correspond with enclosure IP degree of protection!
- The switch for changing the direction of rotation may only be operated by authorised specialists. The direction of rotation must not in particular be reversed in a frost protection circuit.
- The surface temperature between actuator and fitting may not exceed 50°C.
- The cover of the protective housing may be opened for adjustment and servicing. When it is closed afterwards, the housing must seal tight (see installation instructions).
- The device may only be opened at the manufacturer's site. It does not contain any parts that can be replaced or repaired by the user.
- The cables must not be removed from the device installed in the interior.
- The device contains electrical and electronic components and must not be disposed of as household refuse. All locally valid regulations and requirements must be observed.
- The information on chemical resistance refers to laboratory tests with raw materials and finished products and to trials in the field in the areas of application indicated.
- The materials used may be subjected to external influences (temperature, pressure, constructional fixture, effect of chemical substances, etc.), which cannot be simulated in laboratory tests or field trials.
- The information regarding areas of application and resistance can therefore only serve as a guideline. In case of doubt, we definitely recommend that you carry out a test. This information does not imply any legal entitlement. Belimo will not be held liable and will provide no warranty. The chemical or mechanical resistance of the materials used is not alone sufficient for judging the suitability of a product. Regulations pertaining to combustible liquids such as solvents etc. must be taken into account with special reference to explosion protection.
- When used under high UV loads, e.g. extreme sunlight, the use of flexible metallic or equivalent cable conduits is recommended.


Product features

| | |
|------------------------------|--|
| Fields of application | The actuator is particularly suited for use in difficult conditions, e.g. in the field of: <ul style="list-style-type: none"> - Wood drying - Animal breeding - Food processing - Agriculture - Indoor swimming pools / bathhouses - Rooftop ventilation plant rooms - General outdoor applications |
| Resistances | Noxious gas test EN 60068-2-60 (Fraunhofer Institut ICT / DE) Salt fog spray test EN 60068-2-52 (Fraunhofer Institut ICT / DE) Ammoniac test DIN 50916-2 (Fraunhofer Institut ICT / DE) Climate test IEC60068-2-30 (Trikon Solutions AG / CH) Disinfectant (animals) (Trikon Solutions AG / CH) UV Test (Solar radiation at ground level) EN 60068-2-5, EN 60068-2-63 (Quinel / Zug CH) |
| Used materials | Actuator housing polypropylene (PP) Cable glands / hollow shaft polyamide (PA) Connecting cable FRNC Clamp / screws in general Steel 1.4404 Seals EPDM Form fit insert aluminium anodised |
| Application | For rotary valves and butterfly valves with the following mechanical specifications: <ul style="list-style-type: none"> - ISO 5211: F03, F04, F05 (hole circle diameter on the flange for mounting the fitting) - ISO 5211: quadratic, flat head or wedge-shaped spindle head geometry |

Tapet shaft The form fit adapter is not included in the scope of delivery (see «Accessories»).

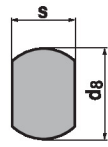
further form fit adapters

ZPV-..



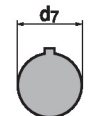
| Typ | s [mm] |
|--------|--------|
| ZPV-08 | 8 |
| ZPV-09 | 9 |
| ZPV-10 | 10 |
| ZPV-11 | 11 |
| ZPV-12 | 12 |
| ZPV-14 | 14 |

ZPF-..



| Typ | s [mm] | d ₈ [mm] |
|--------|--------|---------------------|
| ZPF-08 | 8 | 17 |
| ZPF-09 | 9 | 12 |
| ZPF-10 | 10 | 17 |
| ZPF-11 | 11 | 14 |
| ZPF-14 | 14 | 18 |

ZSK-..



| Typ | d ₇ [mm] |
|--------|---------------------|
| ZPK-12 | 12 |
| ZPK-14 | 14 |

Simple direct mounting Simple direct mounting on the rotary valve or butterfly valve with mounting flange. The mounting orientation in relation to the fitting can be selected in 90° steps.

Manual override Manual override with push-button possible (the gear train is disengaged for as long as the button is pressed or remains locked).
The housing cover must be removed for manual override.

Adjustable angle of rotation Adjustable angle of rotation with mechanical end stops. Standard setting 0...90°. The housing cover must be removed to set the angle of rotation.

High functional reliability The actuator is overload protected, requires no limit switches and automatically stops when the end stop is reached.

Accessories

Electrical accessories

Description

Type

| | |
|--|---------|
| Auxiliary switch 2 x SPDT add-on, grey | S2A GR |
| Feedback potentiometer 140 Ω add-on | P140A |
| Feedback potentiometer 200 Ω add-on | P200A |
| Feedback potentiometer 500 Ω add-on | P500A |
| Feedback potentiometer 1 kΩ add-on | P1000A |
| Feedback potentiometer 2.8 kΩ add-on | P2800A |
| Feedback potentiometer 5 kΩ add-on | P5000A |
| Feedback potentiometer 10 kΩ add-on | P10000A |

Mechanical accessories

Description

Type

| | |
|---|--------|
| Form fit adapter square 8x8x57 mm (LxWxH) | ZPV-08 |
| Form fit adapter square 9x9x57 mm (LxWxH) | ZPV-09 |
| Form fit adapter square 10x10x57 mm (LxWxH) | ZPV-10 |
| Form fit adapter square 11x11x57 mm (LxWxH) | ZPV-11 |
| Form fit adapter square 12x12x57 mm (LxWxH) | ZPV-12 |
| Form fit adapter square 14x14x57 mm (LxWxH) | ZPV-14 |
| Form fit adapter flat head 8xØ17x57 mm (WxØxH) | ZPF-08 |
| Form fit adapter flat head 9xØ12x57 mm (WxØxH) | ZPF-09 |
| Form fit adapter flat head 10xØ17x57 mm (WxØxH) | ZPF-10 |
| Form fit adapter flat head 11xØ14x57 mm (WxØxH) | ZPF-11 |
| Form fit adapter flat head 14xØ18x57 mm (WxØxH) | ZPF-14 |
| Form fit adapter wedge groove Ø12x4x57 mm (ØxWxH) | ZPK-12 |
| Form fit adapter wedge groove Ø14x5x57 mm (ØxWxH) | ZPK-14 |

Electrical installation



Supply from isolating transformer.

Parallel connection of other actuators possible. Observe the performance data.

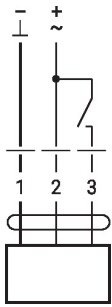
Direction of rotation switch is covered. Factory setting: Direction of rotation Y2.

Wire colours:

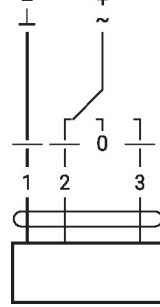
- 1 = black
- 2 = red
- 3 = white

Wiring diagrams

AC/DC 24 V, open/close

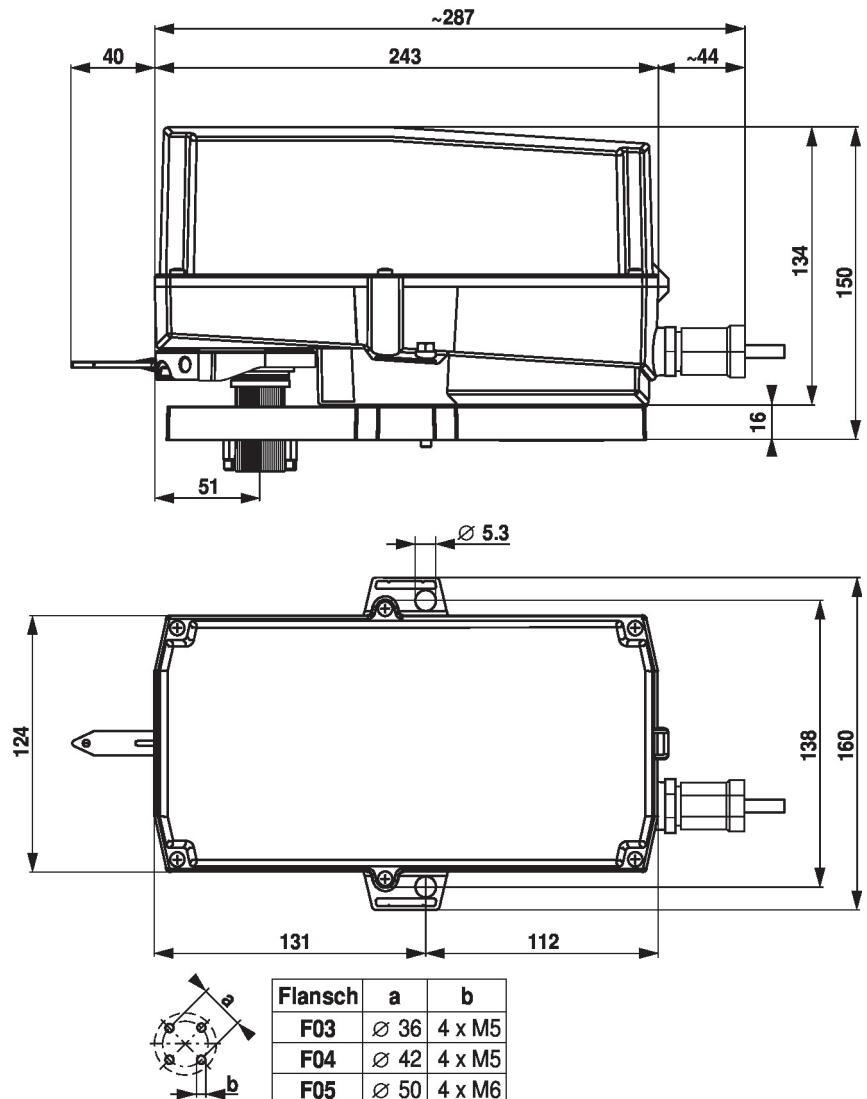


AC/DC 24 V, 3-point



| 1 | 2 | 3 | |
|---|---|---|---------------|
| | | | A - AB = 0% |
| | | | A - AB = 100% |
| | | | stop |
| | | | A - AB = 100% |

Dimensions



Further documentation

- General notes for project planning