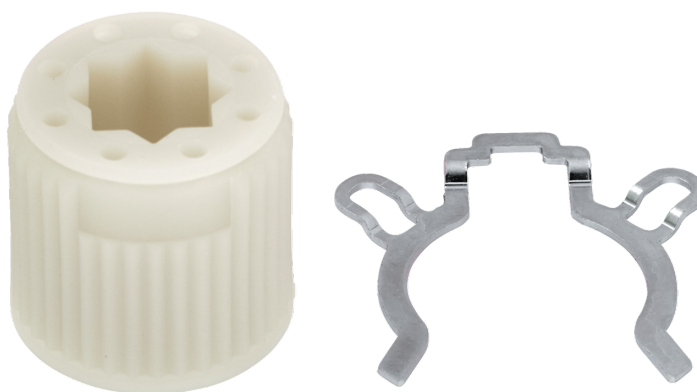


## Form fit insert

- for LMQ..A / NM..A / SM..A



Picture may differ from product

## Technical data

<b>Weight</b>	Weight	0.017 kg
	Packaging quantity	Multipack 20 pcs.
<b>Materials</b>	Used materials	Thermo-plastic material

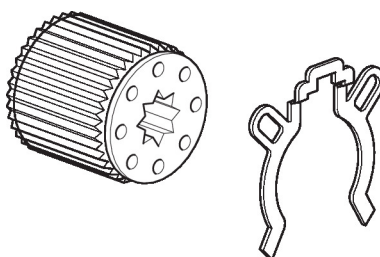
## Safety notes



- This accessory has been designed for use in stationary heating, ventilation and air-conditioning systems and must not be used outside the specified field of application, especially in aircraft or in any other airborne means of transport.
- Only authorised specialists may carry out installation. All applicable legal or institutional installation regulations must be complied with during installation.
- The accessory may not be disposed of as household refuse. All locally valid regulations and requirements must be observed.

## Product features

**Application** Suitable for LMQ..A, NM..A, NMC..A, NMD..A, NMQ..A, SM..A, SMC..A, SMD..A



## Dimensions

<b>Type</b>	<b>Weight</b>
ZF12-NSA	0.017 kg