

Form fit insert

• for LM..A, TM..A



Picture may differ from product

Technical data

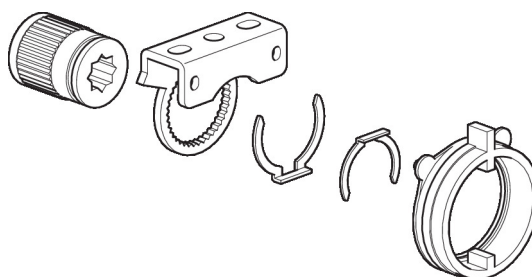
Weight	Weight	0.13 kg
	Packaging quantity	Multipack 20 pcs.
Materials	Used materials	Thermo-plastic material

Safety notes



- This accessory has been designed for use in stationary heating, ventilation and air-conditioning systems and must not be used outside the specified field of application, especially in aircraft or in any other airborne means of transport.
- Only authorised specialists may carry out installation. All applicable legal or institutional installation regulations must be complied with during installation.
- The accessory may not be disposed of as household refuse. All locally valid regulations and requirements must be observed.

Product features

Application Suitable for LM..A, LMC..A, TMC..A


Dimensions

Type	Weight
ZFRL12-LMA	0.13 kg