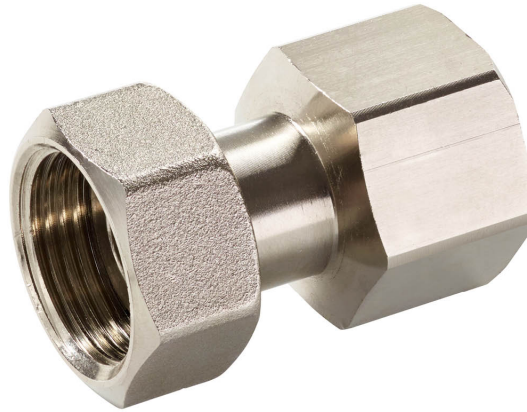


Pipe connector for ball valve with external thread

- internal thread Rp to internal thread G
- incl. gasket



Type Overview

Type	DN	Rp ["]	G ["]	Suitable for	Weight
ZR4515Q	15	1/2	3/4	C415Q-.. / C515Q-..	0.10 kg
ZR4520Q	20	3/4	3/4	C420Q-.. / C520Q-..	0.18 kg

Technical data

Materials	Used materials	Nickel-plated brass
------------------	----------------	---------------------

Safety notes



- This accessory has been designed for use in stationary heating, ventilation and air-conditioning systems and must not be used outside the specified field of application, especially in aircraft or in any other airborne means of transport.
- Only authorised specialists may carry out installation. All applicable legal or institutional installation regulations must be complied with during installation.
- The accessory may not be disposed of as household refuse. All locally valid regulations and requirements must be observed.

General notes

Delivery notes In the scope of delivery: union nut (G thread), insert (RP thread), gasket (IT)

Dimensions

Dimensional drawings

