

Gas Monitor

Relay Unit

Belimo's relay unit adds four additional relay outputs to operate ventilation equipment, show visible alarms, and interface with other signaling equipment.



2-year warranty



Type Overview

Type	Measured values	Number of relays	Output signal active gas	Communication
EXT-6002-250-14-A	CO, NO ₂	1	2x AO	CAN bus, BACnet MS/TP
EXT-6002-250-14-B	CO, NO ₂	2	-	CAN bus, BACnet MS/TP
EXT-6002-250-14-C	CO, NO ₂	0	-	CAN bus

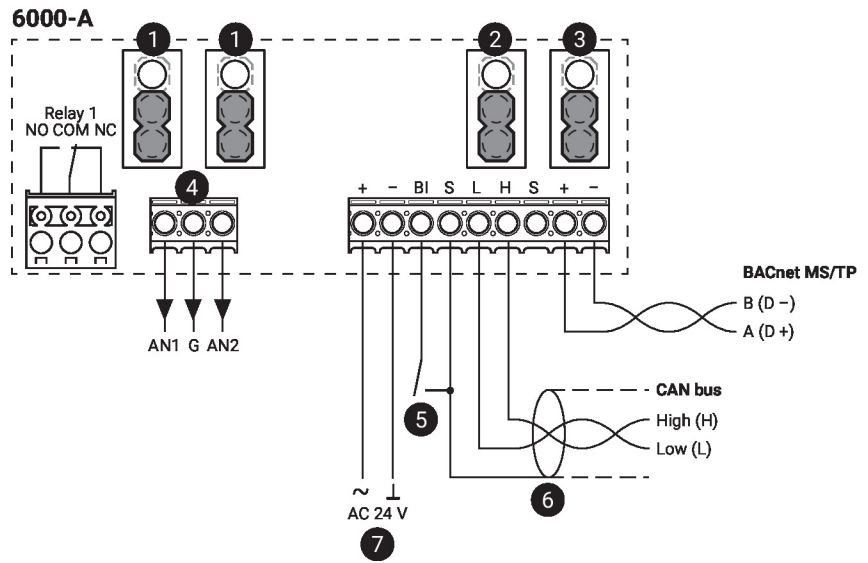
Technical data

Electrical Data	Nominal voltage	AC/DC 24 V
	Nominal voltage frequency	50/60 Hz
	Power consumption AC	5 VA
	Power consumption DC	5 W
	Cable entry	2 top, 2 bottom, 1 rear – 1/2" EMT
	Cable specification	1 pair twisted shielded 24...18AWG
	Fuse	Thermal PTC, auto-reset
Data bus communication	Communication	CAN bus BACnet MS/TP
Functional Data	Application	air
	Output signal active note	2x Analog outputs, 2...10 V or 4...20 mA, user selectable with jumper
	Output signal relay note	1 x SPDT, max. 1.5 A (0.4 A inductive), AC 250 V
	Mounting	1.3 m [4 ft] above the floor
	Max. altitude	6562 ft [2000 m] above sea level
	Coverage area	Radius: 15 m [50 ft] Area: 700 m ² [7500 ft ²] There can be no obstructions such as walls, stairs, elevators, shelving with solid fill, tool chests, etc.
	Display	LCD, With backlight Gas concentration, system status
	Response time	<30 s (T90)
	Alarm	Audible alarm
	Measuring Data	Measured values
Measuring range gas		CO: 0...250 ppm NO ₂ : 0...10 ppm

Measuring Data	Long-term stability	<5% per year <2% per month
	Measurement Repeatability	<+3% CO equivalent <+2% NO ₂ equivalent
Materials	Housing	Flame resistant polycarbonate ABS UL-94-V0 and UL-94-5VA for indoor use
Safety Data	Protection class IEC/EN	II, reinforced insulation
	Protection class UL	II, reinforced insulation
	UL Approval	CAN/CSA 205-2017, CAN/CSA 22.2 No. 152, BTL
	Pollution degree	2
	Ambient humidity	Max. 80% RH, non-condensing
	Ambient temperature	-20...40°C [-4...104°F]

Accessories

Spare parts	Description	Type
	Sensor module CO (Carbon Monoxide), 0...250 ppm, Electro-chemical	EXT-OP-5502-250
	Sensor module NO ₂ (Nitrogen Dioxide), 0...10 ppm, Electro-chemical	EXT-OP-5514
Communication module	Description	Type
	Communication module, CAN bus, BACnet MS/TP, Relays (1 or 2) SPDT, 5A @ AC 125 V, non-inductive	EXT-OP-6000-A
	Communication module, CAN bus, BACnet MS/TP, Relays (1 or 2) SPDT, 5A @ AC 125 V, non-inductive	EXT-OP-6000-B
	Communication module, CAN bus	EXT-OP-6000-C
	Communication module, Ventilated cover, CAN bus, BACnet MS/TP, Relays (1 or 2) SPDT, 5A @ AC 125 V, non-inductive	EXT-OP-6000-BVC
Calibration gas mixture	Description	Type
	Calibration gas bottle N ₂ (Nitrogen), 0...100% vol., Zero gas, 103 L,	EXT-OP-GAS-N2
	Calibration gas bottle NO ₂ (Nitrogen Dioxide), 0...5 ppm, 58 L,	EXT-OP-GAS-NO2
	Calibration gas bottle CO (Carbon Monoxide), 0...100 ppm, 103 L,	EXT-OP-GAS-CO-100
Electrical accessories	Description	Type
	Audible alarm	EXT-OP-5000-AL
Mechanical accessories	Description	Type
	Splash proof enclosure, Wall mount	EXT-OP-6000-BT
	Splash proof enclosure, Duct mount	EXT-OP-6000-GN



1 Analogue output settings

Down position: 2...10 V (factory setting)
 Up position: 4...20 mA

2 End of line (EOL) jumper: CAN bus

Down position: Termination OFF (factory setting)
 Up position: Termination ON (first and last unit only should have this jumper in the up position)

3 End of line (EOL) jumper: BACnet MS/TP

Down position: Termination OFF (factory setting)
 Up position: Termination ON (first and last unit only should have this jumper in the up position)

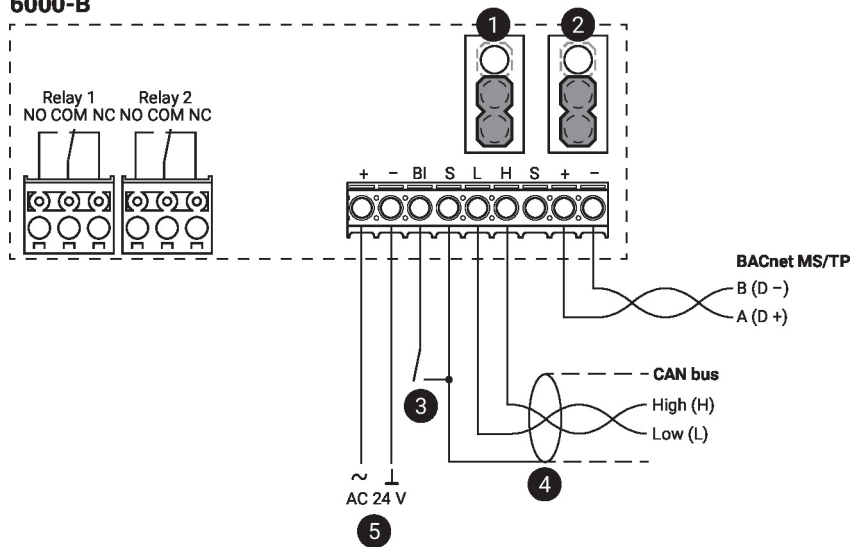
4 Analogue output

5 Binary input to limit switch

6 Shield connected at the first unit only, at others only looped through

7 No connection to the ground

6000-B



- 1 End of line (EOL) jumper: CAN bus**

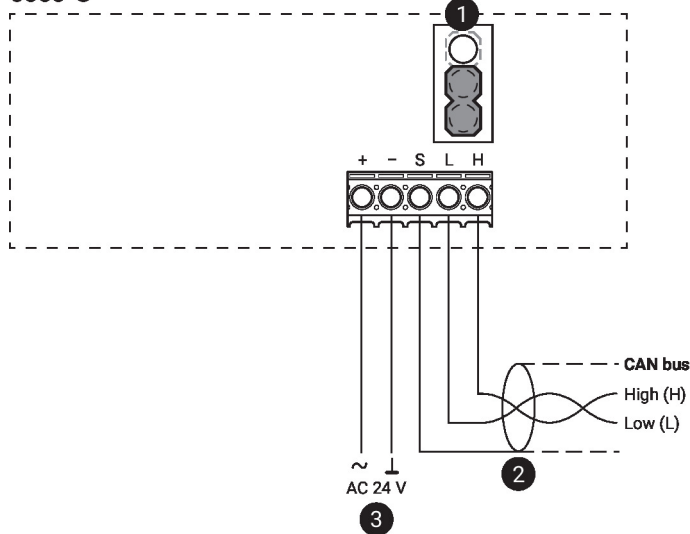
Down position: Termination OFF (factory setting)

Up position: Termination ON (first and last unit only should have this jumper in the up position)
- 2 End of line (EOL) jumper: BACnet MS/TP**

Down position: Termination OFF (factory setting)

Up position: Termination ON (first and last unit only should have this jumper in the up position)
- 3 Binary input to limit switch**
- 4 Shield connected at the first unit only, at others only looped through**
- 5 No connection to the ground**

6000-C



1 End of line (EOL) jumper: CAN bus

Down position: Termination OFF (factory setting)

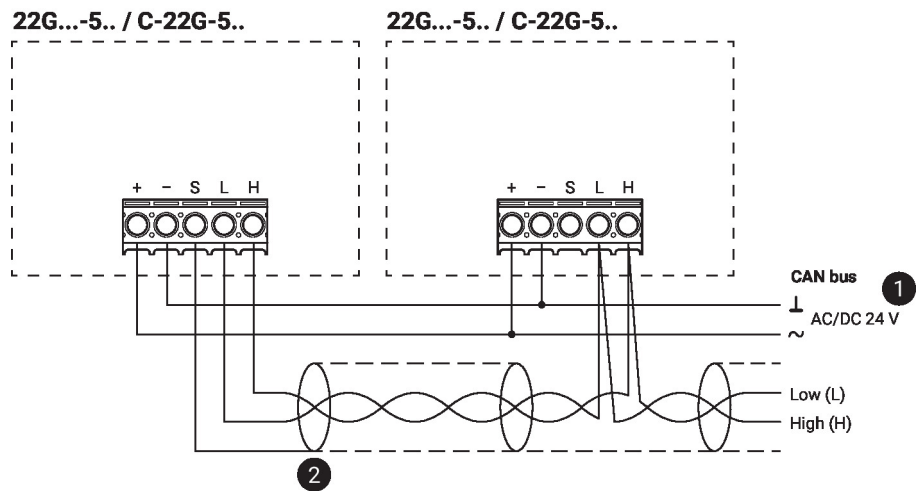
Up position: Termination ON (first and last unit only should have this jumper in the up position)

2 Shield connected at the first unit only, at others only looped through

3 No connection to the ground

Wiring CAN bus

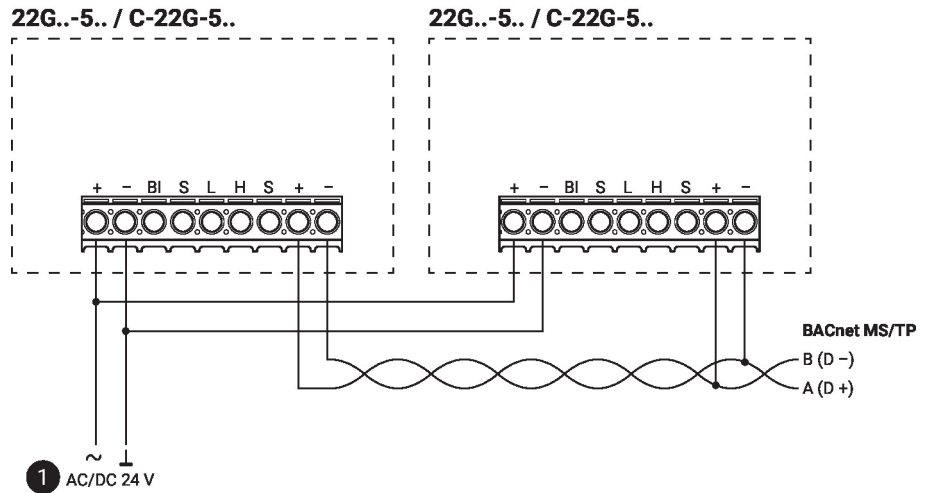
CAN bus



1 No connection to the ground

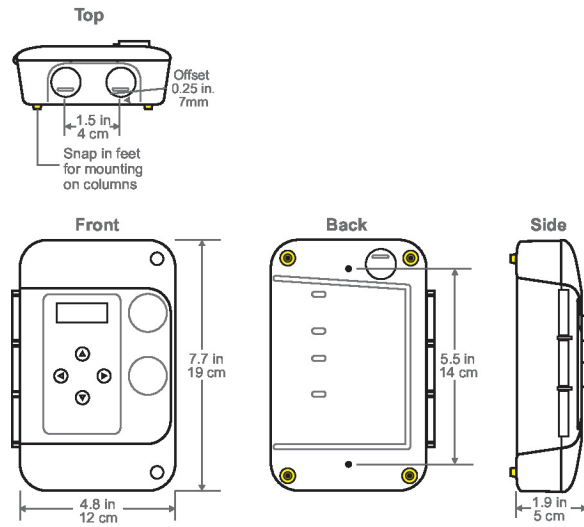
2 Shield connected at the first unit only, at others only looped through

Wiring RS485 BACnet MS/TP



1 No connection to the ground

Dimensions



Type	Weight
EXT-6002-250-14-A	0.99 lb [0.45 kg]
EXT-6002-250-14-B	0.99 lb [0.45 kg]
EXT-6002-250-14-C	0.99 lb [0.45 kg]