

Butterfly Valve with ANSI Class 300 Lug types

- Disc 316 stainless steel
- Bubble tight shut-off
- Teflon seat
- Valve face-to-face dimensions comply with API 609 & MSS-SP-67
- For use with dead-end service
- Completely assembled and tested, ready for installation
- The SHP series are Flowseal® valves manufactured by the Crane Company.



5-year warranty

Picture may differ from product

Type overview

Type	DN
F6100-300SHP	4" [100]

Technical data

Functional data	Valve size [mm]	4" [100]
	Fluid	chilled or hot water, up to 60% glycol, steam
	Fluid Temp Range (water)	-22...400°F [-30...204°C]
	Body Pressure Rating	ANSI Class 300
	Close-off pressure Δps	600 psi
	Flow characteristic	modified equal percentage, unidirectional
	Leakage rate	0%
	Pipe connection	Flange for use with ASME/ANSI class 300
	Servicing	maintenance-free
	Flow Pattern	2-way
	Controllable flow range	quarter turn, mechanically limited
	Cv	451
	Maximum Inlet Pressure (Steam)	50 psi
	Maximum Velocity	32 FPS
	Lug threads	3/4-10 UNC
Materials	Valve body	Carbon steel full lug (ASME B16.34)
	Stem	17-4 PH stainless steel
	Seat	RPTFE
	Bearing	glass backed PTFE
	Disc	316 stainless steel
Suitable actuators	Non Fail-Safe	GMB(X) 2*GMB(X) PRB(X)
	Electronic fail-safe	2*GKB(X) PKRB(X)

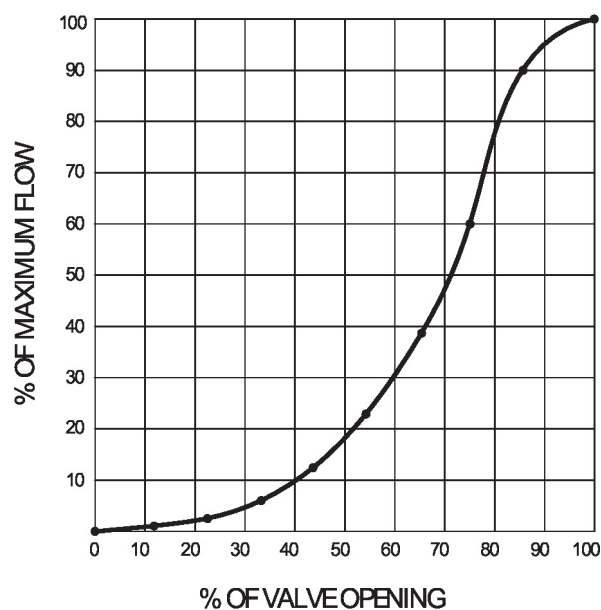
Safety notes



- WARNING: This product can expose you to lead which is known to the State of California to cause cancer and reproductive harm. For more information go to www.p65warnings.ca.gov

Product features

Flow/Mounting details



Dimensions

Type

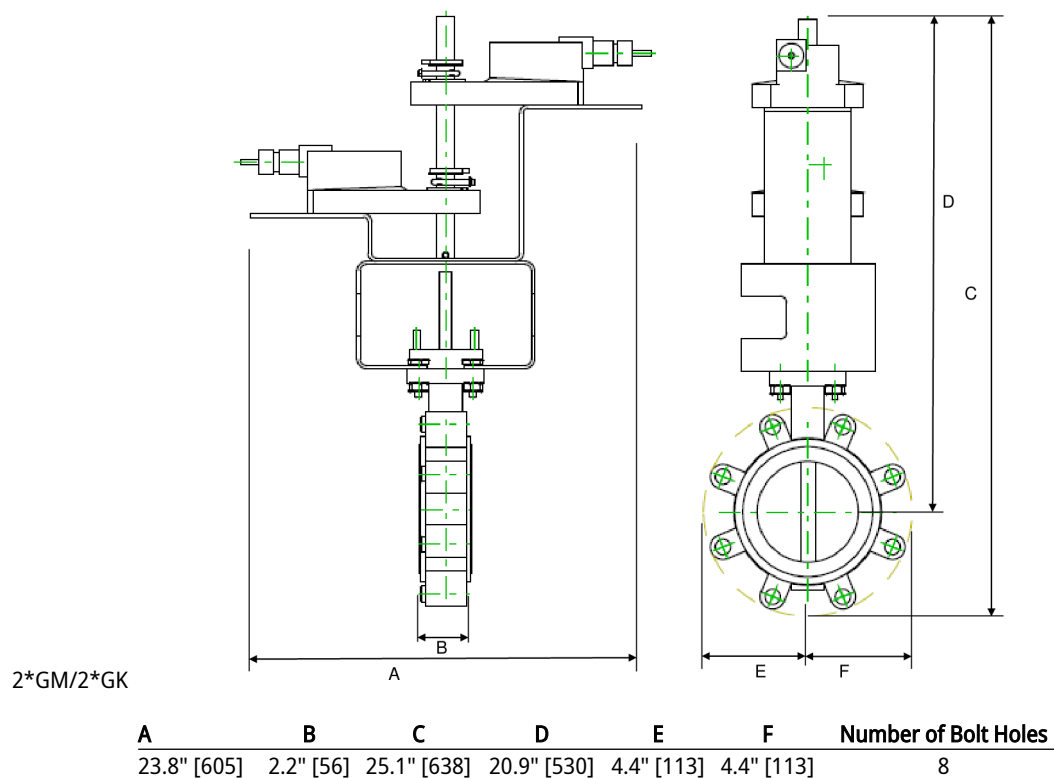
F6100-300SHP

DN

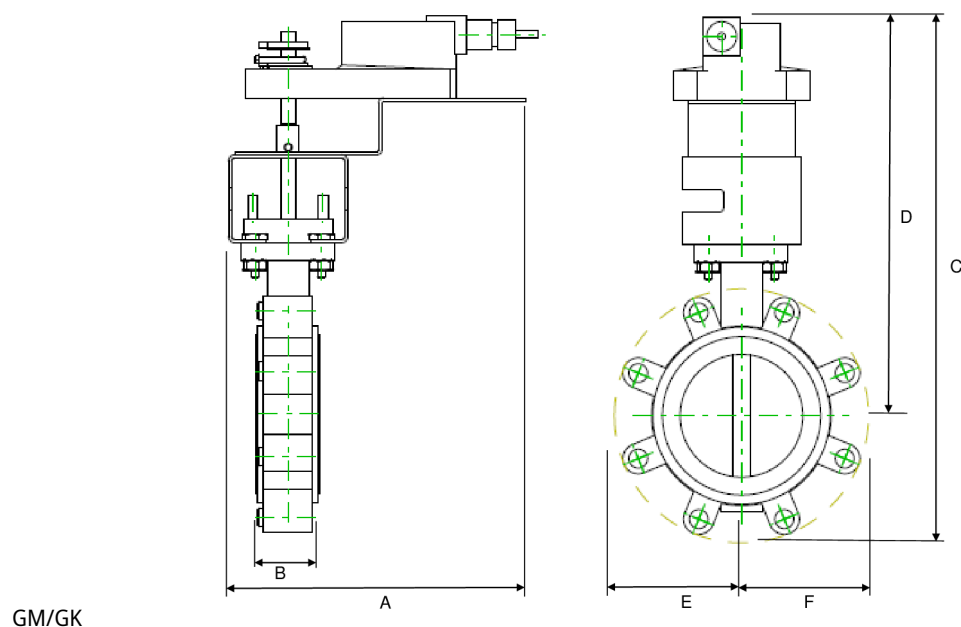
4" [100]

Weight

29 lb [13 kg]

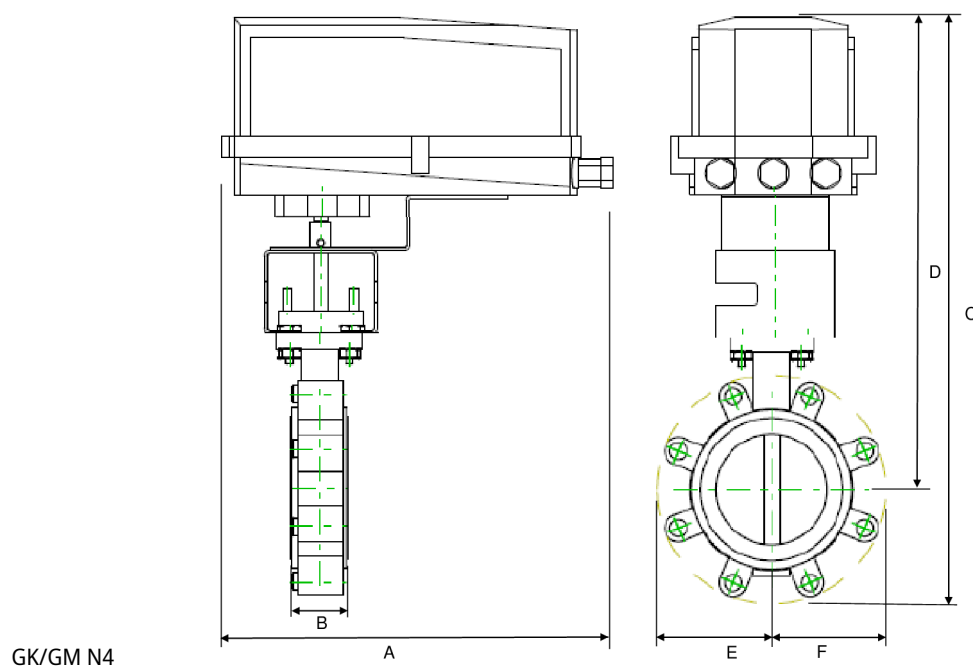


Dimensions



GM/GK

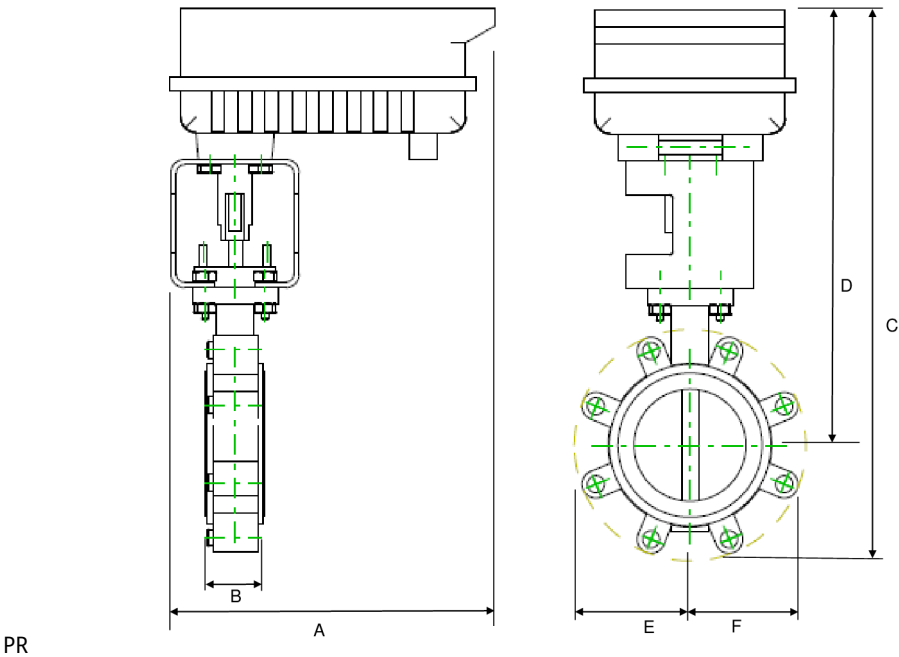
A	B	C	D	E	F	Number of Bolt Holes
15.3" [388]	2.2" [56]	16.8" [426]	13.0" [331]	3.9" [100]	3.9" [100]	8



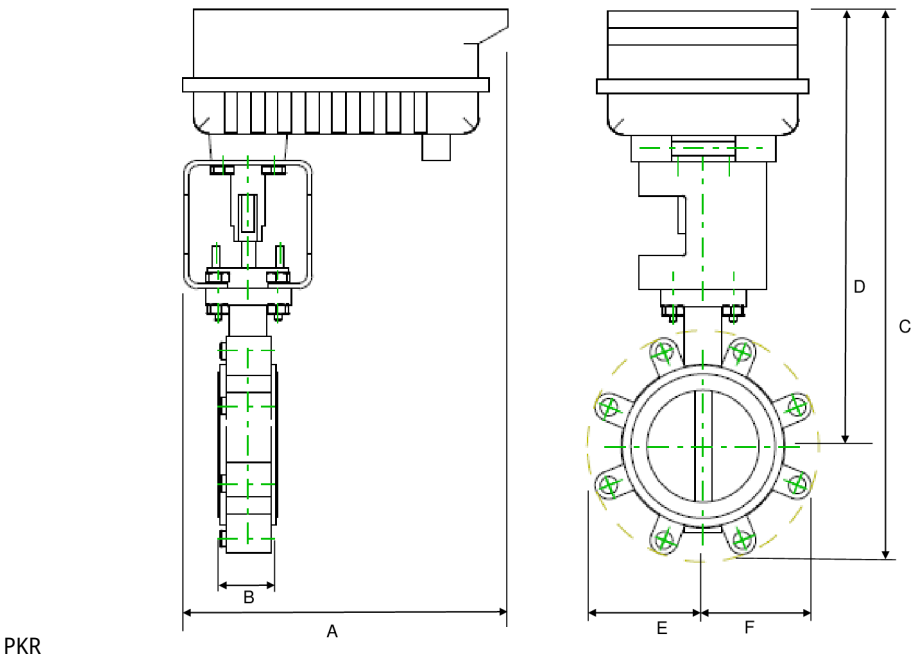
GK/GM N4

A	B	C	D	E	F	Number of Bolt Holes
10.9" [277]	2.2" [56]	18.7" [476]	14.0" [355]	4.9" [124]	4.9" [125]	8

Dimensions



A	B	C	D	E	F	Number of Bolt Holes
12.0" [304]	2.1" [54]	20.3" [515]	16.0" [406]	4.5" [114]	4.5" [114]	8



A	B	C	D	E	F	Number of Bolt Holes
12.0" [304]	2.1" [54]	22.1" [562]	17.8" [453]	4.5" [114]	4.5" [114]	8