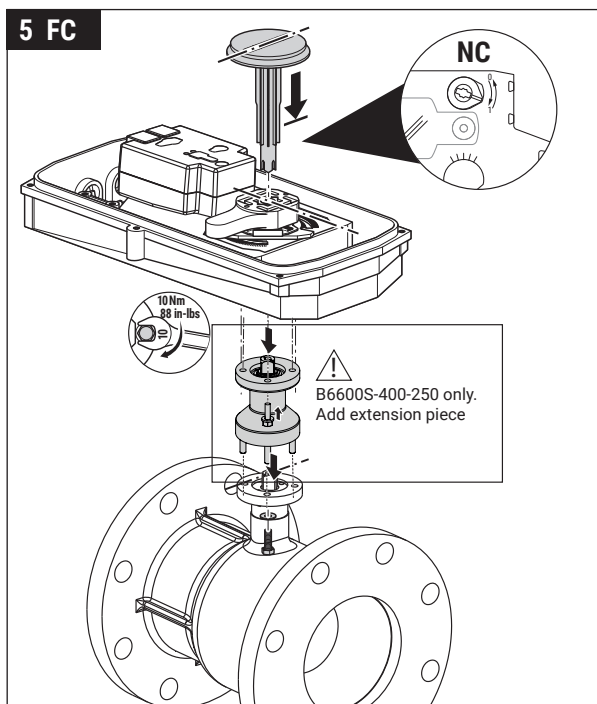
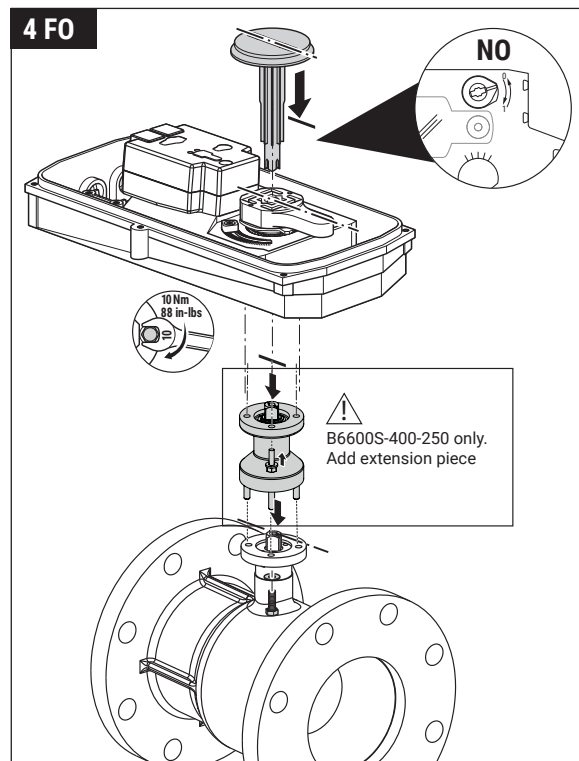
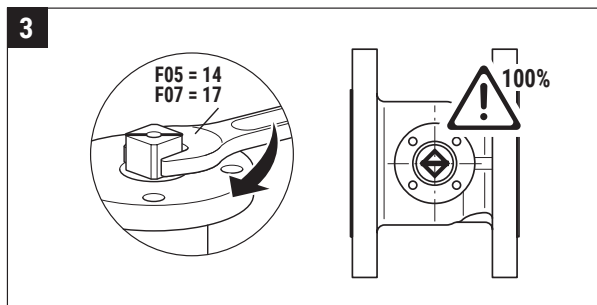
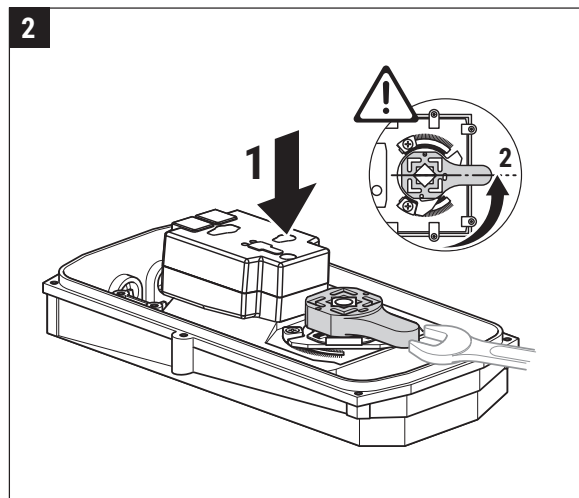
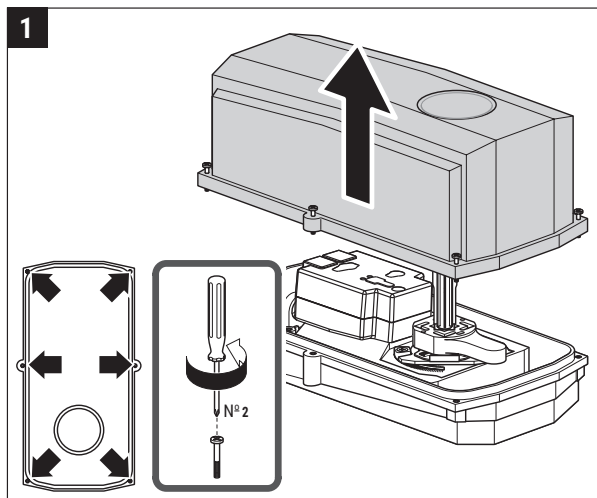
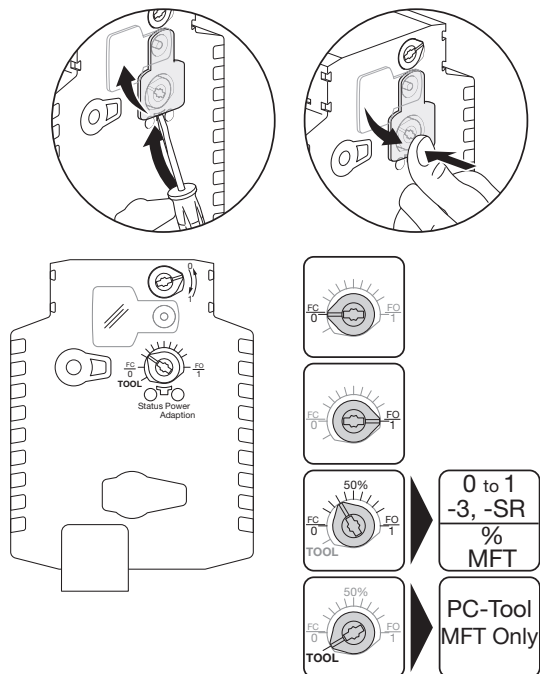


# GK NEMA 4 Actuators with B6 Flanged Characterized Control Valves

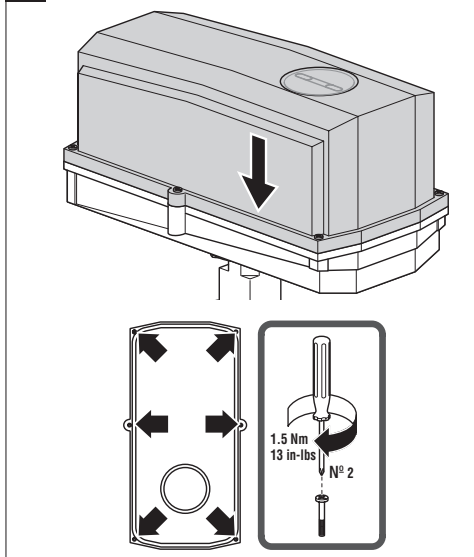


# GK NEMA 4 Actuators with B6 Flanged Characterized Control Valves

## 6 Fail-Safe Position Setting

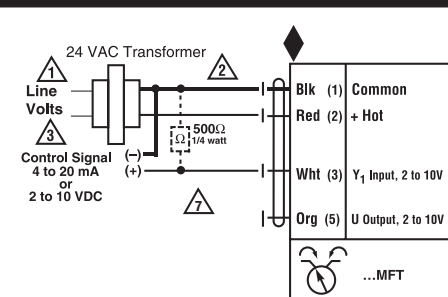


## 7

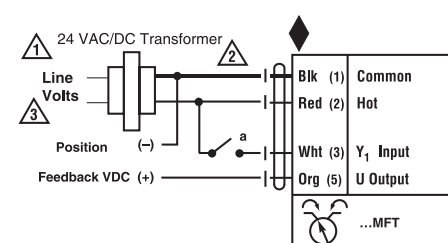


## WIRING DIAGRAMS

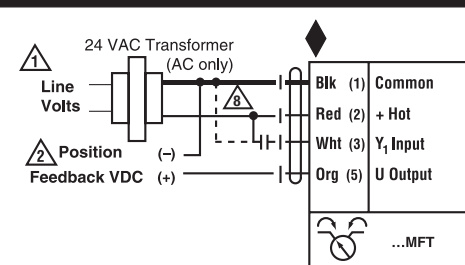
### Electronic Fail-Safe Actuator with -MFT



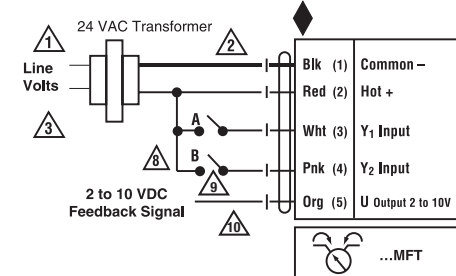
VDC / 4 to 20 mA



On/Off



PWM



Floating Point

### Notes:

- ◆ Meets cULus requirements without the need of an electrical ground connection
- 1 Provide overload protection and disconnect as required
- 2 Actuators may be connected in parallel. Power consumption and input impedance must be observed.
- 3 Actuators may also be powered by 24 VDC.
- 7 Only connect common to neg. (-) leg of control circuits.
- 7 A 500 Ω (ZG-R01) converts the 4 to 20 mA control signal to 2 to 10 VDC.
- 8 Control signal may be pulsed from either the Hot (Source) or Common (Sink) 24 VAC line.
- 9 Contact closures A & B also can be triacs. A & B should both be closed for the triac source and open for triac sink.
- 10 For triac sink the Common connection from the actuator must be connected to the Hot connection of the controller. Position feedback cannot be used with a triac sink controller. The actuator internal common reference is not compatible.

ORG	Orange	Anaranjado	Orange	Alaranjado
PNK	Pink	Rosado	Rosa	Cor-de-rosa
WHT	White	Blanco	Blanc	Branco
RED	Red	Rojo	Rouge	Vermelho
BLK	Black	Negro	Noir	Preto