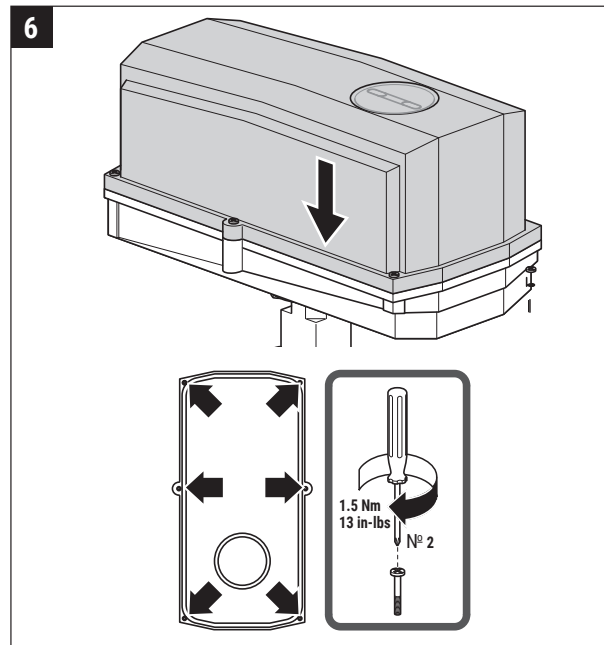
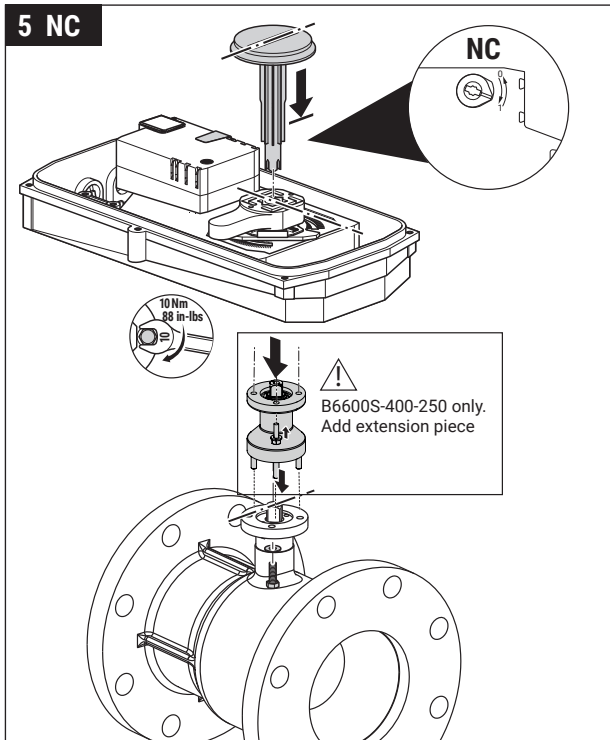
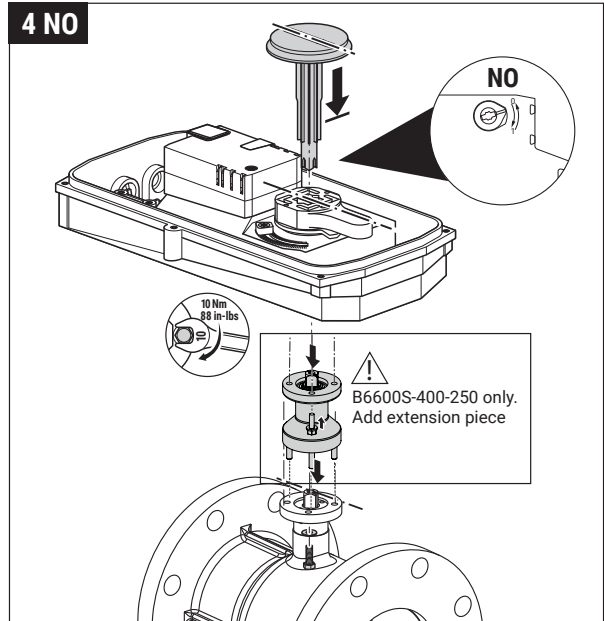
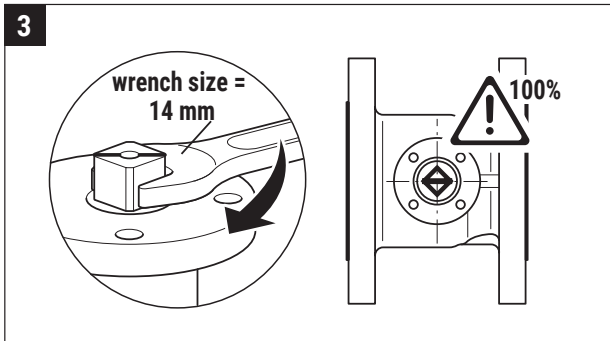
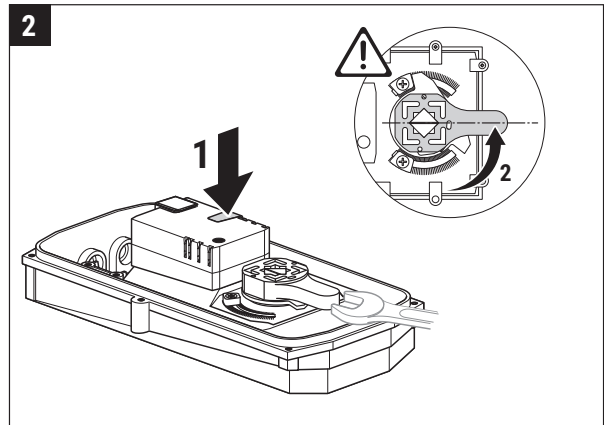
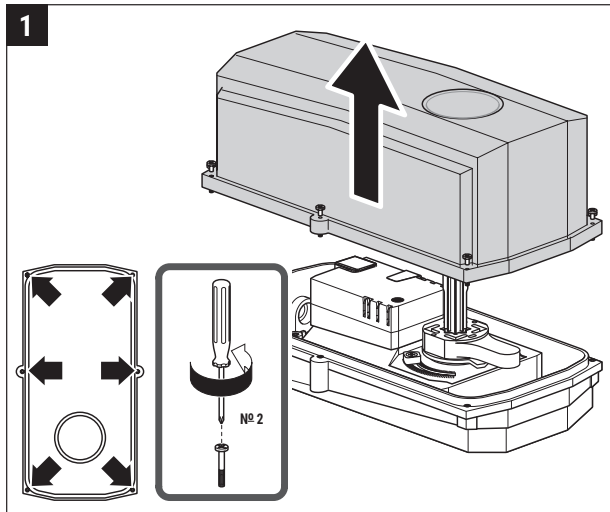
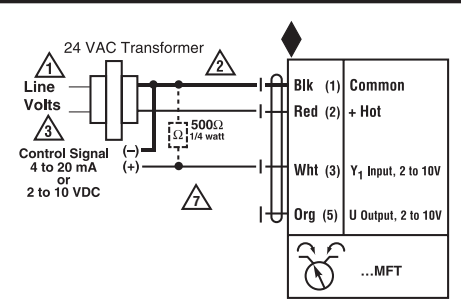


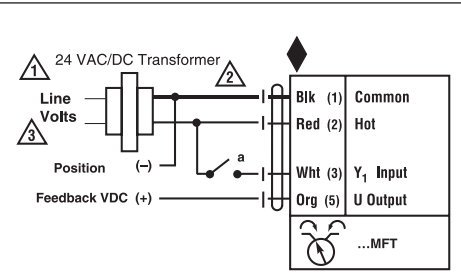
GR NEMA 4 Actuators with B6 Flanged Characterized Control Valves



Non-Spring Return Actuator with -MFT

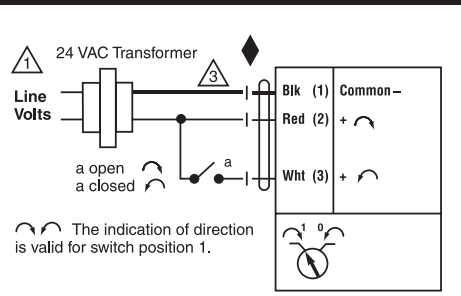


VDC / 4 to 20 mA

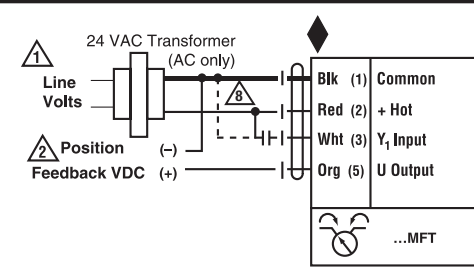


On/Off

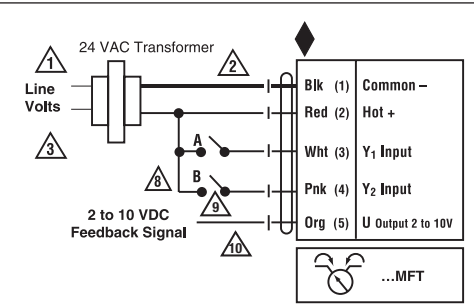
Non-Spring Return Actuator with On/Off, Floating Point



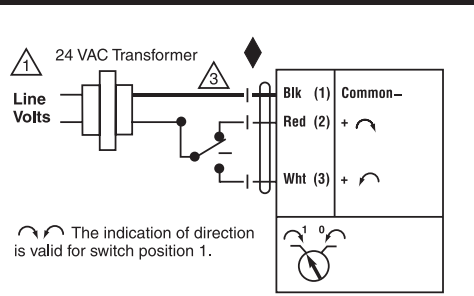
On/Off



PWM



Floating Point



Floating Point Control

Notes:

- ◆ Meets cULus requirements without the need of an electrical ground connection
- ⚠ Provide overload protection and disconnect as required
- ⚠ Actuators may be connected in parallel. Power consumption and input impedance must be observed.
- ⚠ Actuators may also be powered by 24 VDC.
- ⚠ Only connect common to neg. (-) leg of control circuits.
- ⚠ A 500 Ω (ZG-R01) converts the 4 to 20 mA control signal to 2 to 10 VDC.
- ⚠ Control signal may be pulsed from either the Hot (Source) or Common (Sink) 24 VAC line.
- ⚠ Contact closures A & B also can be triacs. A & B should both be closed for the triac source and open for triac sink.
- ⚠ For triac sink the Common connection from the actuator must be connected to the Hot connection of the controller. Position feedback cannot be used with a triac sink controller. The actuator internal common reference is not compatible.

ORG
Orange
Anaranjado
Orange
Alaranjado

PNK
Pink
Rosado
Rosa
Cor-de ros

WHT
White
Blanco
Blanc
Branco

RED
Red
Rojo
Rouge
Vermelho

BLK
Black
Negro
Noir
Preto